



NSC Parish Councils Feedback Session- Oxford- Bletchley Section

Chair

Sarah Jacobs (Senior Engagement
Manager – Local Representatives Groups)

Tuesday 14th January, 6pm-8pm



1. Welcome

Agenda

1. Welcome

- Introductions
- Housekeeping

2. Update on the project

3. Introduction to the workshops

4. Update on Proposals

- Non-Statutory Consultation Proposals
- Environmental Impacts

5. Design Feedback Sessions

- Design and Connectivity

6. General Q&A

Introductions – Meeting the Team

- **Sarah Jacobs** – Senior Engagement Manager
- **Siobhan Adeleke** – DCO Statutory Stakeholder Engagement
- **Mark Conway** – Development Programme Manager
- **Heidi Hutchings** – Environment & Sustainability Manager
- **Ben Nicholass** – Traffic, Transport Planning and Modelling Senior Manager
- **Anthony O’Dea** – Engineering Manager
- **Myles Hudson** – Design Lead



Housekeeping

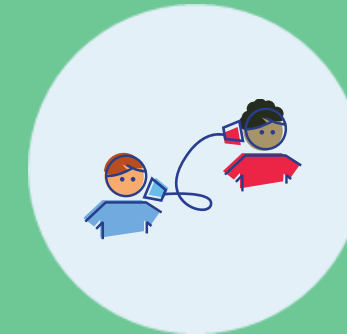
Thank you for attending

This is a virtual meeting.

- This meeting is being recorded and transcribed to be used to produce the meeting summary note.
- Please feel free to drop questions in the chat box/and or use the 'raise hand' function.
- Please drop your name and area you represent into the chat box.
- Inconsiderate behaviour and/or aggressive comments will not be tolerated and anyone acting in this manner will be asked to leave the call.



Display your full name in username



Please use the mute function



Use the 'Raise Hand' function if you want to raise a point during the meeting



Please do put your camera on if possible

Terms of reference

Scope of discussions

- We are seeking feedback on the design and optionality set out within the non-statutory consultation that is currently live. We welcome your feedback on:
 - Community benefits and impacts.
 - Land and property requirements.
 - Environmental and sustainability.
 - Construction and logistics.
 - Traffic and transport.
- Due to time constraints, we will not be discussing other route options shared historically, or any works outside the current scope.

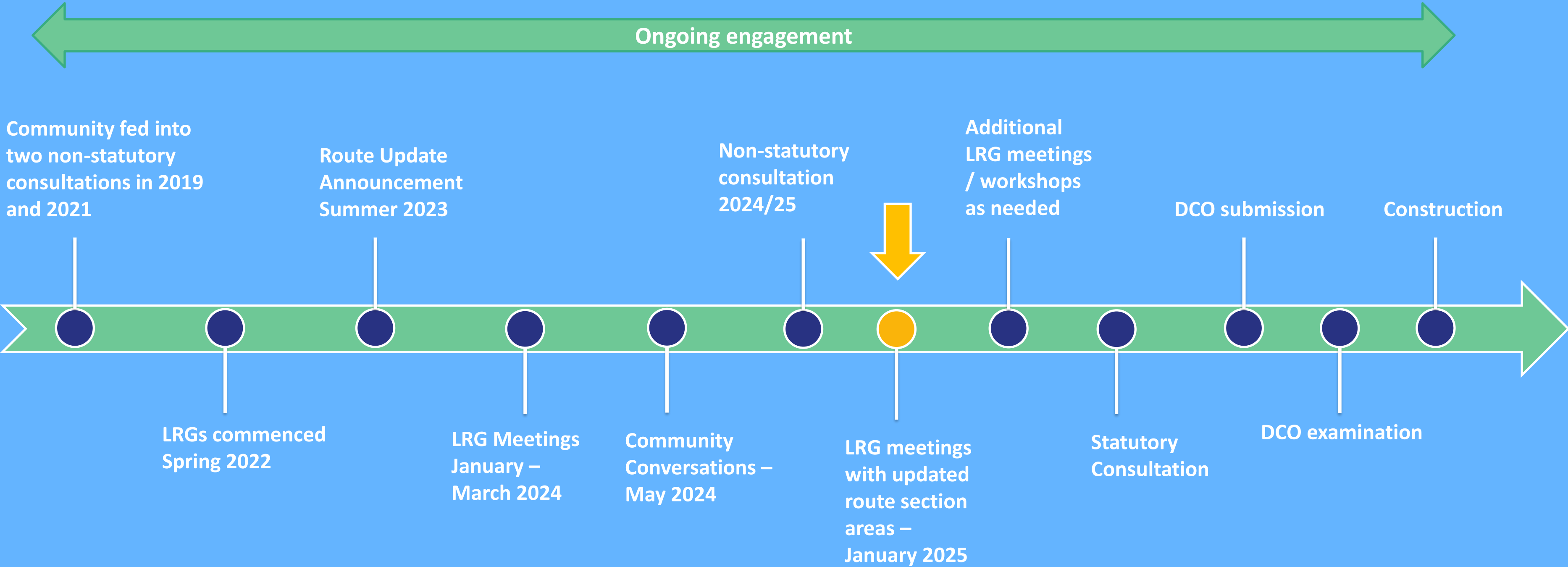
Collecting feedback

- We will be recording your feedback and issues raised and will consider these through our design change process.
- We will be sharing the feedback recorded with all attendees within 5 days of the session.
- The discussions within this workshop are supplementary to the formal feedback mechanism of the non-statutory consultation (via survey or written response).



2. Update on the project

Where we are in the process



Non-statutory consultation so far

- We are now over halfway through our non-statutory consultation
- 10 in-person events held so far with over 3000 attendees
- 2 online events held with almost 100 attendees
- Over 2000 responses received as of 2nd January
- View a large range of materials and information on our website including a Virtual Consultation room



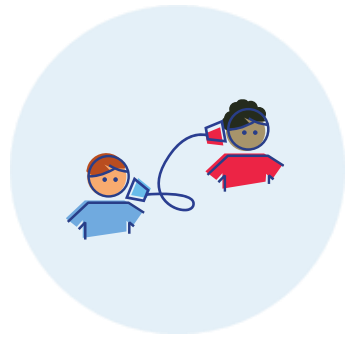
Remaining consultation events:

Venue	Event location	Event date
Bletchley Masonic Centre	Bletchley	15-Jan
Summerlin Centre	Woburn Sands	17-Jan
Clayton Hotel	Cambridge	18-Jan
St Andrews Church	Cherry Hinton	21-Jan

3. Introduction to the workshops

Design workshops

Purpose of this workshop



To discuss detail on the proposals within our non-statutory consultation and provide an opportunity for you to input into the design and feedback process, capturing issues or areas of concern, suggestions and area specific local feedback.



The workshops will be interactive, and we will be asking for feedback on various elements of the proposals throughout the session. Please do give your feedback and ask questions throughout.



The workshops are taking place within the consultation period to give us the opportunity to understand your feedback.

Engagement with Local Authorities

We are delivering interactive design workshops in-person with local authorities throughout the non-statutory consultation period.

On 10 January we met with representatives from Oxfordshire County Council, Cherwell District Council and Oxford City Council. Key topics discussed included:

- **Consideration of proposed solutions for London Road Level Crossing;**
- **Impact on traffic in Bicester town centre;**
- **Emphasis on active travel and working collaboratively to focus on door-to-door connectivity;**
- **Changes at Oxford, Bicester Village and Oxford Parkway stations.**



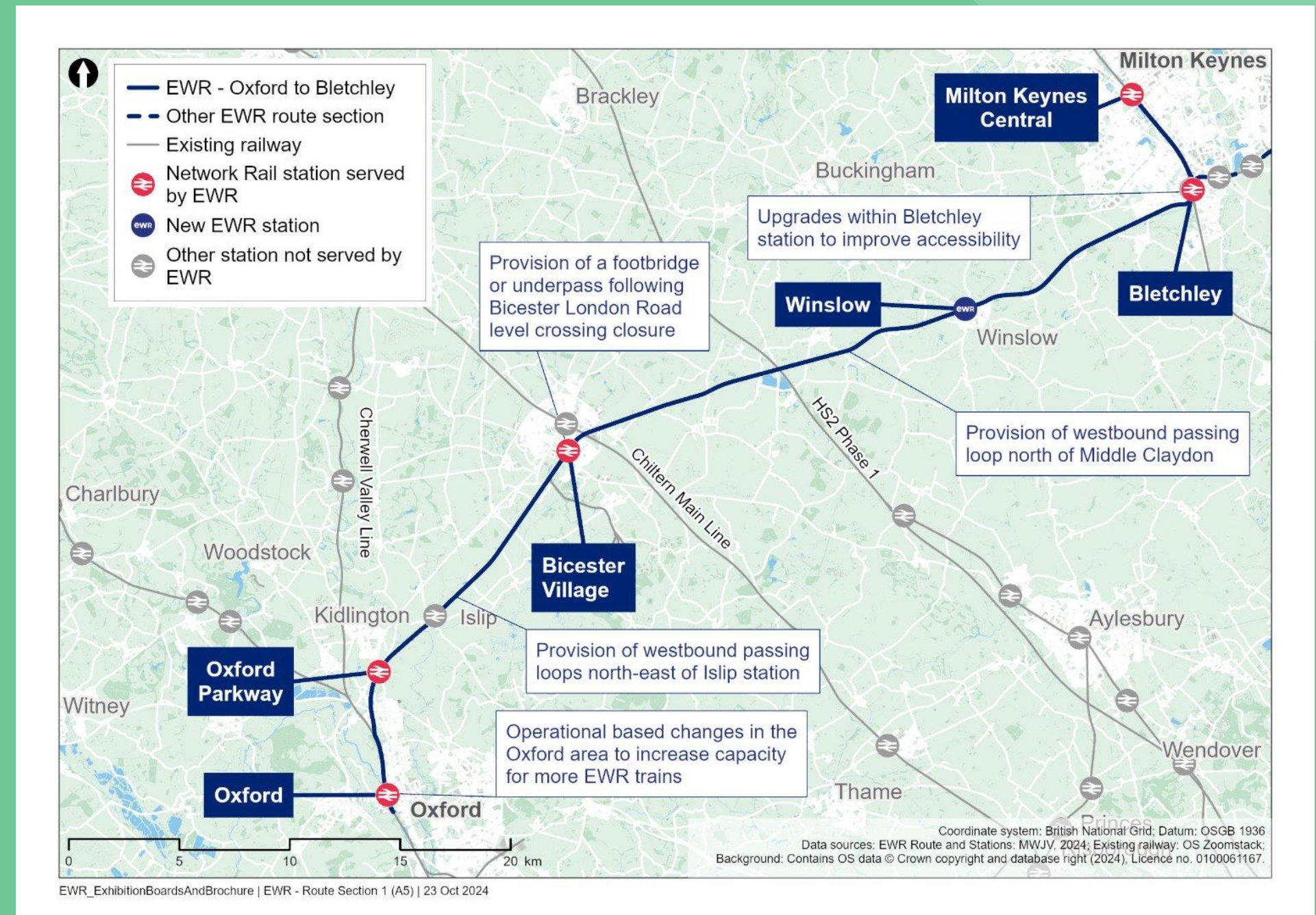
4. Update on the Proposals

Route section 1: Oxford to Bletchley

This section of the East West Rail route runs along the existing railway between Oxford and Bletchley.

We are proposing improvements to the existing railway between Oxford and Bletchley to enable four East West Rail services to run per hour in each direction between Oxford and Cambridge. It is approximately 48km long (30 miles).

The construction and testing of the section of railway between Bicester and Bletchley is nearing completion as part of connection stage 1 and will enable two East West Rail services to run services to run between Oxford and Bletchley/Milton Keynes.



Route section 1: Oxford to Bletchley

Summary of works between Oxford and Bletchley

Between Oxford and Bletchley, we are proposing:

- Operational based solutions in the Oxford station area
- Potential upgrades at Oxford, Oxford Parkway, Bicester Village, Winslow and Bletchley Stations to meet future demand. We may need to make layout changes to the stations, such as changes to the gate barriers and entranceways, to better accommodate the increased number of passengers and reduce potential crowding
- Any changes made to the stations will consider what's required when EWR services commence but also, what will be required for future years
- Train crew accommodation for the staff that work on the new East West Rail services
- Closure of the level crossing at London Road, Bicester. An accessible pedestrian overbridge or underpass would be provided, and vehicles diverted via existing roads, and exploring potential highways improvements to reduce the impact on journey times
- Widening of the railway near Islip and Middle Claydon for the construction of passing loops
- Potential diversion of existing overhead electricity utilities along the route

Approach to the environment

Protecting the environment is a fundamental part of our decision making when developing our proposals, and in doing so we will continue to take a proactive approach to avoid, reduce or compensate for potential negative environmental impacts to deliver a sustainable railway.

We remain committed to the environmental principles outlined as part of the 2021 non-statutory consultation. Since then, we have prepared an Environmental Sustainability Strategy which contains six environmental sustainability pillars. Each pillar has an associated ambition and definition.



Approach to the environment- continued

Consideration of the potential likely environmental impacts of the proposals and mitigations are described in the **Environmental Update Report** (which will be presented as part of this consultation).

For the statutory consultation, a **Preliminary Environmental Information Report** will be shared, and an **Environmental Statement** will then be submitted as part of the Development Consent Order.

Throughout this process, design development and Environmental Impact Assessment will continue, making use of information gathered through surveys.



Key Environmental Considerations: Oxford-Bletchley

- Change in noise levels with the introduction of the East West Rail train service.
- Acquisition of property.
- Loss of agricultural land.
- Protected/designated sites notably:
 - Oxford Meadows Special Area of Conservation (SAC).
 - Port Meadow with Wolvercote Common and Green Site of Special Scientific Interest (SSSI).
 - The Trap Grounds SSSI.
- Protected sites, waterbodies and ancient woodland are found in a triangle between the villages of Calvert, Kingswood and Botolph Claydon to the south-east of the project
- At least seven Water Framework Directive (WFD) surface water catchments potentially impacted in this route section
- Scheduled Monuments and Listed Buildings



5. Design Feedback Session

Design Feedback Session: Design and Connectivity

Station upgrades

- Oxford Station
- Oxford Parkway, Bicester Village and Winslow
- Bletchley Station

Electrification

Passing loops (Islip, Middle Claydon)

London Road Level Crossing

- Options (footbridge / underpass)
- Maintaining connectivity for the local community
- Bicester road network traffic diversions

General Q&A / AOB

Thank you

east
west
RAIL

