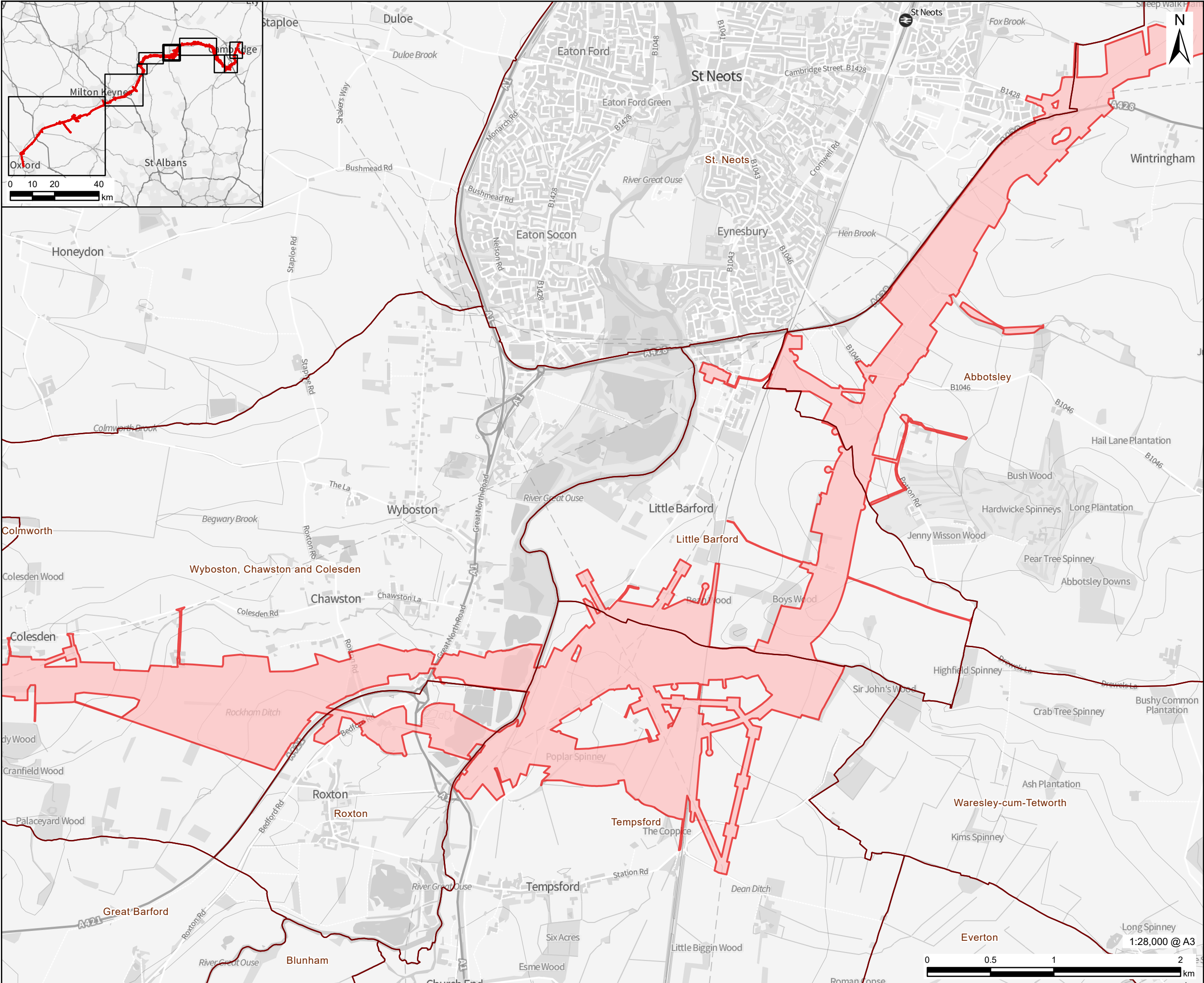


Filename: \\na.aecom.com\\fsl\\EMEA\\London-UK\\LON06\\Legacy\\UK\\LON06\\PPFS\\W001\\UK\\LON06\\PPFS\\W001\\YDPE\\Library\\GIS_DATA\\Projects\\E\\WRL\\Layout\\250320_EWR_WebMap.aprx

Revision: 01 Drawn: LL Checked: JS Approved: KA Date: 2025-04-03



This drawing has been prepared for the use of AECOM's client. It may not be used, modified, reproduced or relied upon by third parties, except as agreed by AECOM or as required by law. AECOM accepts no responsibility and denies any ability whatsoever, to any party that uses or relies on this drawing without AECOM's express written consent. Do not scale this document. All measurements must be obtained from the stated dimensions.

AECOM

PROJECT

East West Rail

CLIENT

Local Representatives
Groups - East West Rail

CONSULTANT

Aldgate Tower
2, Leman Street
London, E1 8FA
United Kingdom
aecom.com

LEGEND

- Red Line Boundary
- Parish Boundary

NOTES

Contains OS data © Crown Copyright and
database right 2025
Contains data from OS Zoomstack

ISSUE PURPOSE

Draft

PROJECT NUMBER

60729088

FIGURE TITLE

Parish Maps:
Roxton to East of St Neots Parish Map
(Page 5 of 9)

FIGURE NUMBER

Figure 1