

**east**  
**west**  
**RAIL**

**[eastwestrail.co.uk](http://eastwestrail.co.uk)**

# Bicester Town Local Representatives Group

## Meeting 5

Wednesday 14 June 2023

# 01. Welcome and today's agenda

# Today's agenda

01.  
Welcome and today's agenda

---

02.  
Housekeeping

---

03.  
General Updates

---

04.  
Topic – Route Update Announcement

---

05.  
Review of actions from meeting #4

---

06.  
Closing remarks, future meetings & topics

---

# 02. Housekeeping

# Housekeeping

## Thank you for joining

This is a virtual meeting.

Please display your full name as when you registered to attend – this can be done through the 'Participants' section.

To help everyone feel part of the discussion, please feel free to turn your camera on during the meeting if you can.

Please use the 'Raise Hand' function to raise a question during the meeting, found in the bottom ribbon (under the 'Reactions' option).



**Display your full name in username**



**Please use the mute function**



**Use the 'Raise Hand' function if you want to raise a point during the meeting**



**Please do put your camera on if possible**

# 03. General updates

## Since our last meeting

- Local elections held: welcome to the newly elected LRG members.
- East West Rail Accessibility Advisory Panel met for their first session in April.
- **On 26th May**, we published the route update for East West Rail (EWR)
- We have now published a range of **Factsheets** that you may also find useful including:
  - Our approach to freight
  - Active Travel

<https://eastwestrail.co.uk/routeupdate>





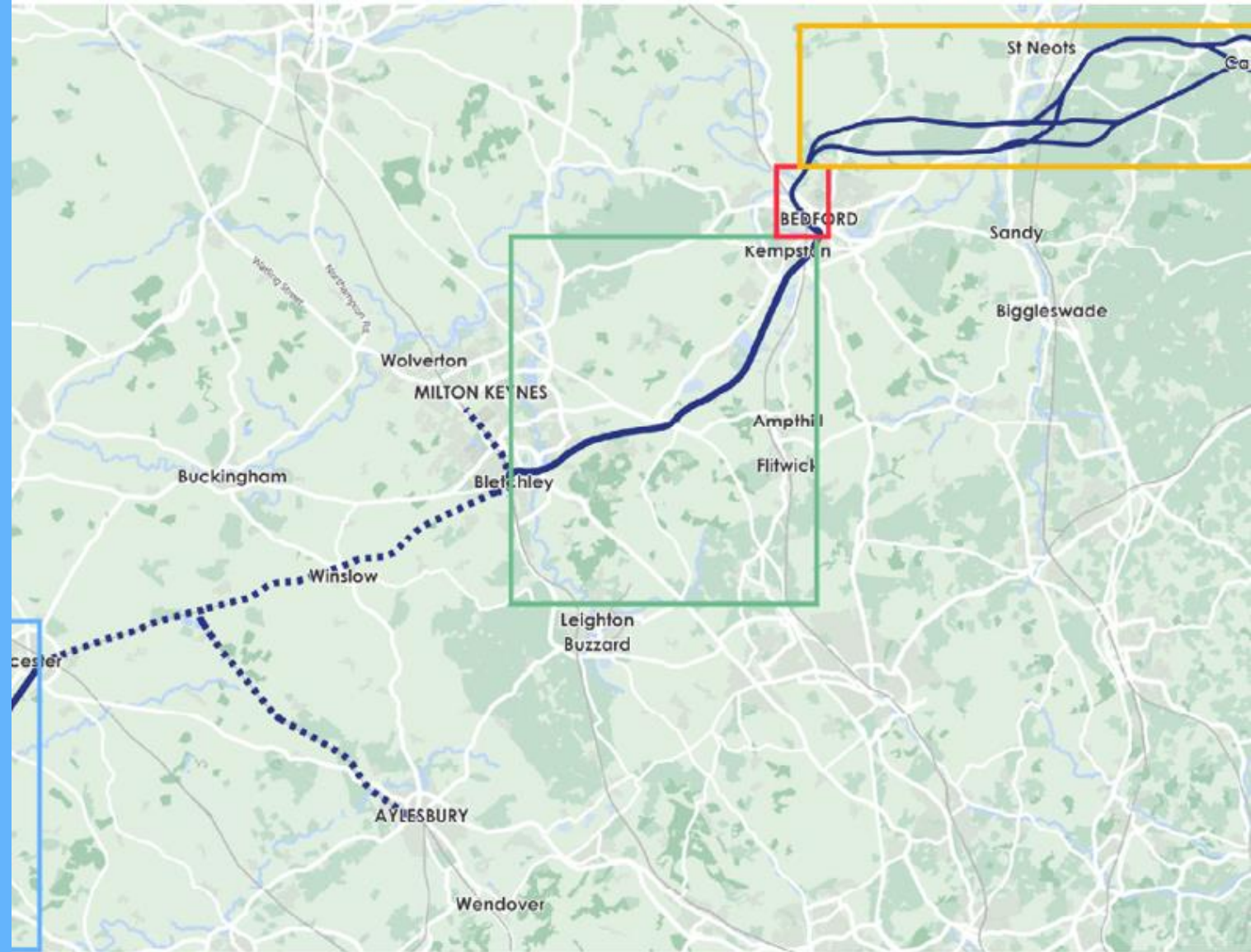
# Introduction

Since the non-statutory public consultation on East West Rail in 2021, we've carefully reviewed feedback and used it, alongside a strategic review of the Project, to guide our developing plans to design a railway that meets the needs of communities between Oxford and Cambridge.

We've made some changes to the proposals we presented in 2021, which take account of:

- Feedback received during and since the 2021 consultation
- Further technical and environmental work
- The analysis undertaken as part of the Affordable Connections Project

Following that work, we are now sharing a number of updates about EWR.



- Project section A:  
Oxford to Bicester
- Project section B:  
Bicester to Marston Vale Line
- Project section C:  
Bedford



Legend

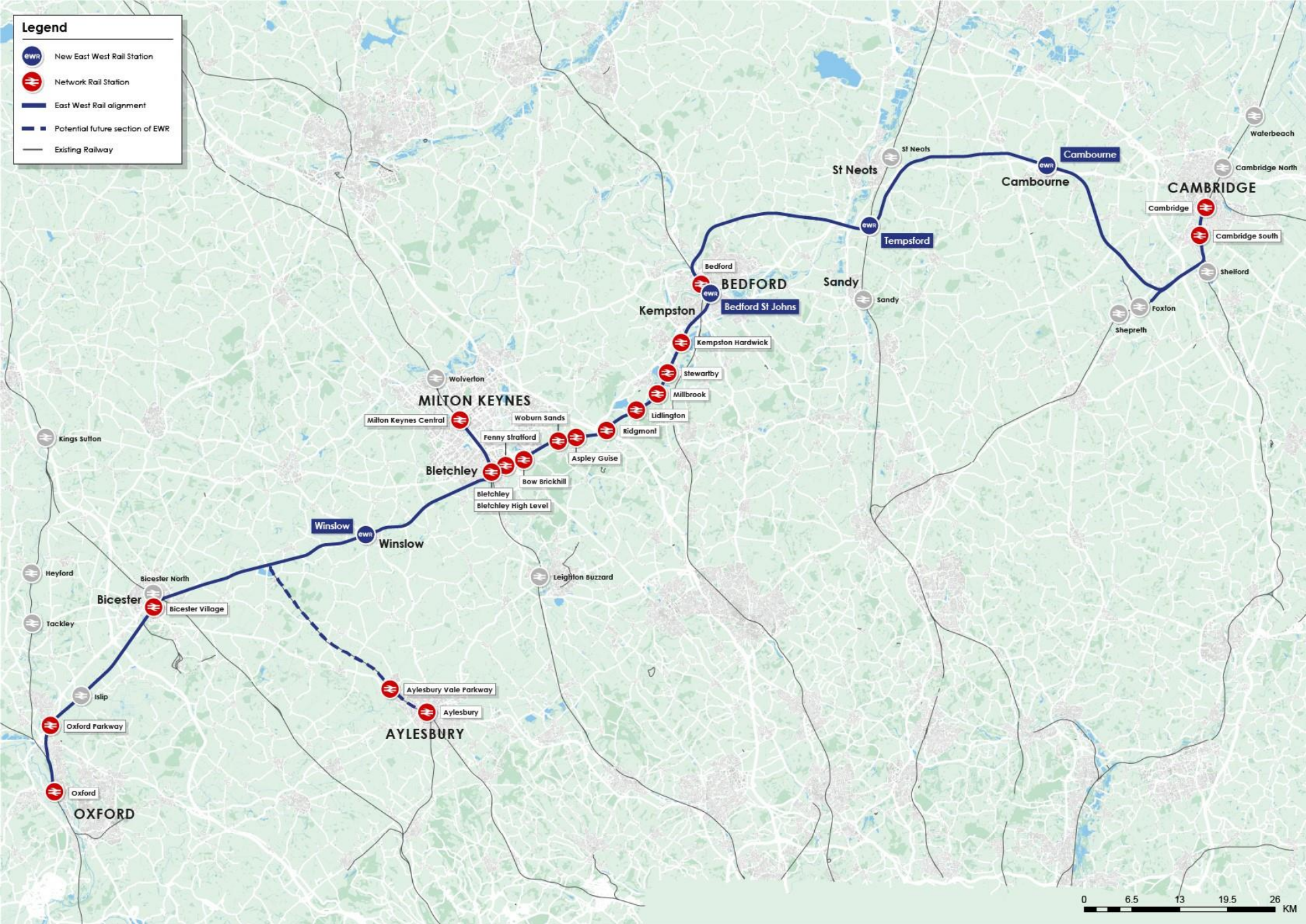
 New East West Rail Station

 Network Rail Station

 East West Rail alignment

 Potential future section of EWR

 Existing Railway





# What have we announced?

## Route Update Report

The report describes how the proposals for EWR have developed since the 2021 consultation and what our preferred plans for certain sections of the railway are, including:

- Route preferences
- Route-wide matters
- What happens next



## Associated Reports

Alongside the Route Update Report, we're also publishing:

- The 2021 Consultation Feedback Report
- The EWR Economic and Technical Report
- The 2023 Need to Sell Property Scheme



# A little more on the Need to Sell Scheme

## 2023 Route Update Announcement

We have launched our Need to Sell Property Scheme, for home and property owners with a compelling need to sell.

This will allow people to sell their home or small business to EWR Co while the Project is in development and delivery, where they been unable to do so other than at a substantially reduced value because of the EWR Project.

Telephone number – 0330 838 7583

Email – [land@eastwestrail.co.uk](mailto:land@eastwestrail.co.uk)

Postal Address:

One Grafton Mews

Midsummer Boulevard

Milton Keynes

MK9 1FB



04.

# Topic- Route Update Announcement

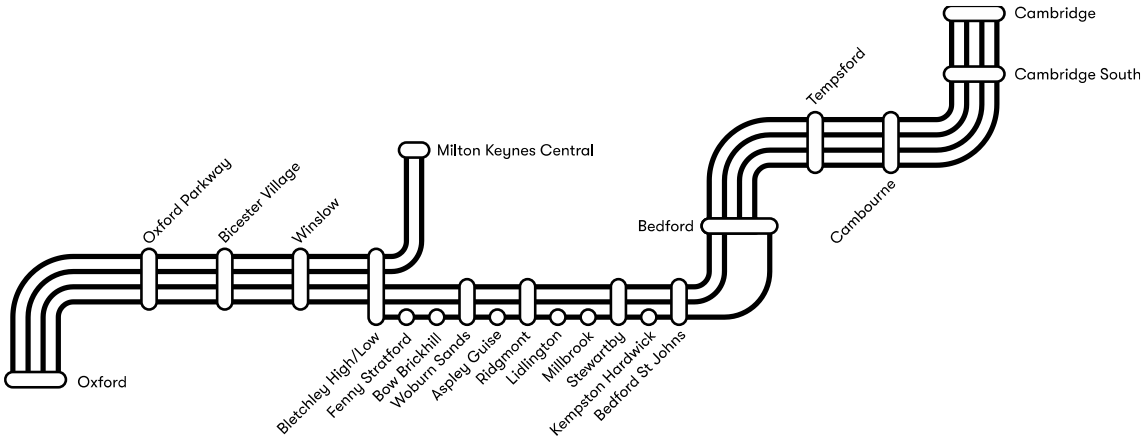
Shaun Fisher, Programme Manager – Oxford

# Updated service pattern

## Updated service pattern

We’ve established an updated service pattern for EWR, which will provide:

- Four trains per hour from Oxford – two progress to Milton Keynes, two continue to Cambridge
- A further two trains per hour travelling between Bedford and Cambridge
- An additional service between Bletchley and Bedford



# Oxford station

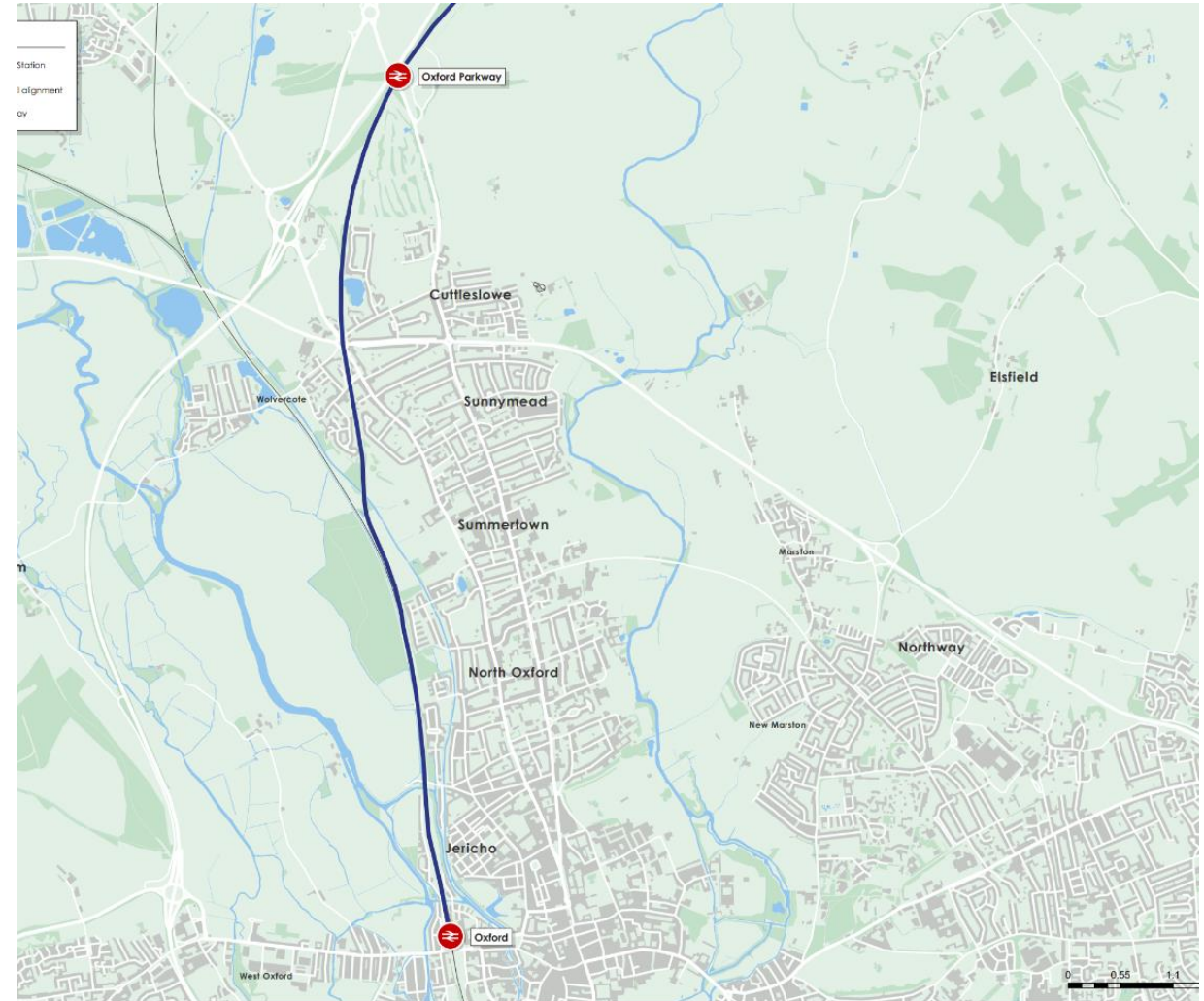
## Oxford station

Four EWR trains per hour will depart Oxford station: two to Milton Keynes and two to Cambridge.

Work is already being carried out at Oxford station by Network Rail, but further work will be needed to enable the full EWR service.

In 2021 we talked with Oxford communities about our plans to:

- Add new platforms so more trains can use the station
- Build new infrastructure south of the station
- Make improvements to the station itself



# Oxford station

## Oxford station

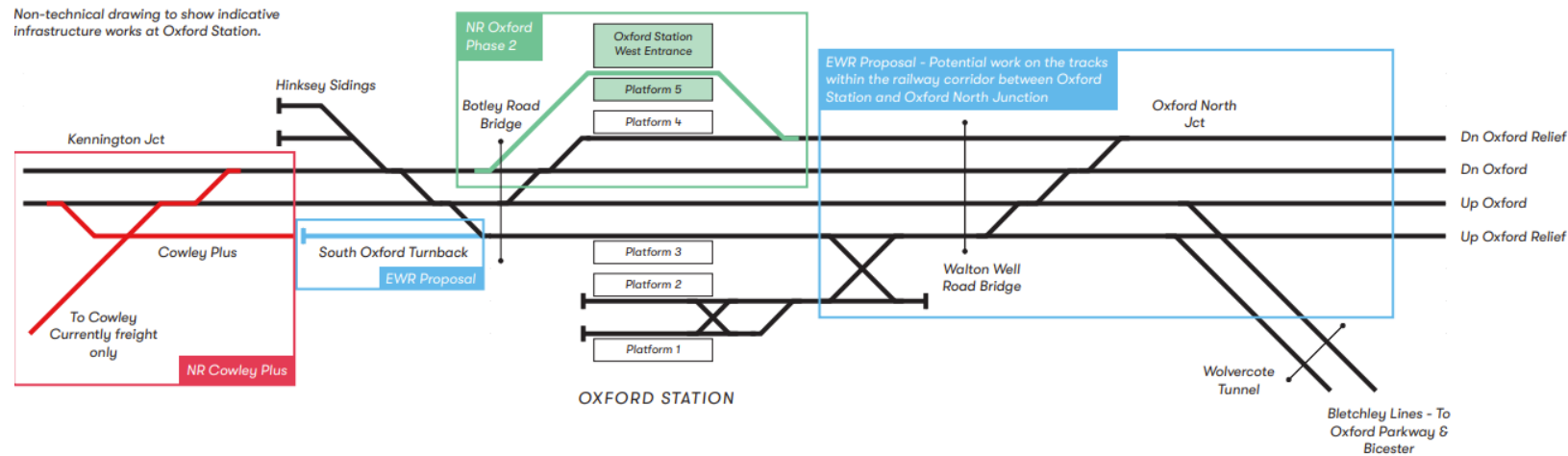
Network Rail is planning for a new platform and entrance on the western side of Oxford station

It may also reopen the Cowley Branch Line to passengers – meaning trains could turn back south of the station

If this doesn't proceed, we'll develop 'turn back' capabilities for EWR services

We'll also explore if more trackwork is needed to boost capacity between Oxford Station and Oxford North Junction

We'll present additional information about the particular works we propose to undertake at the statutory consultation.

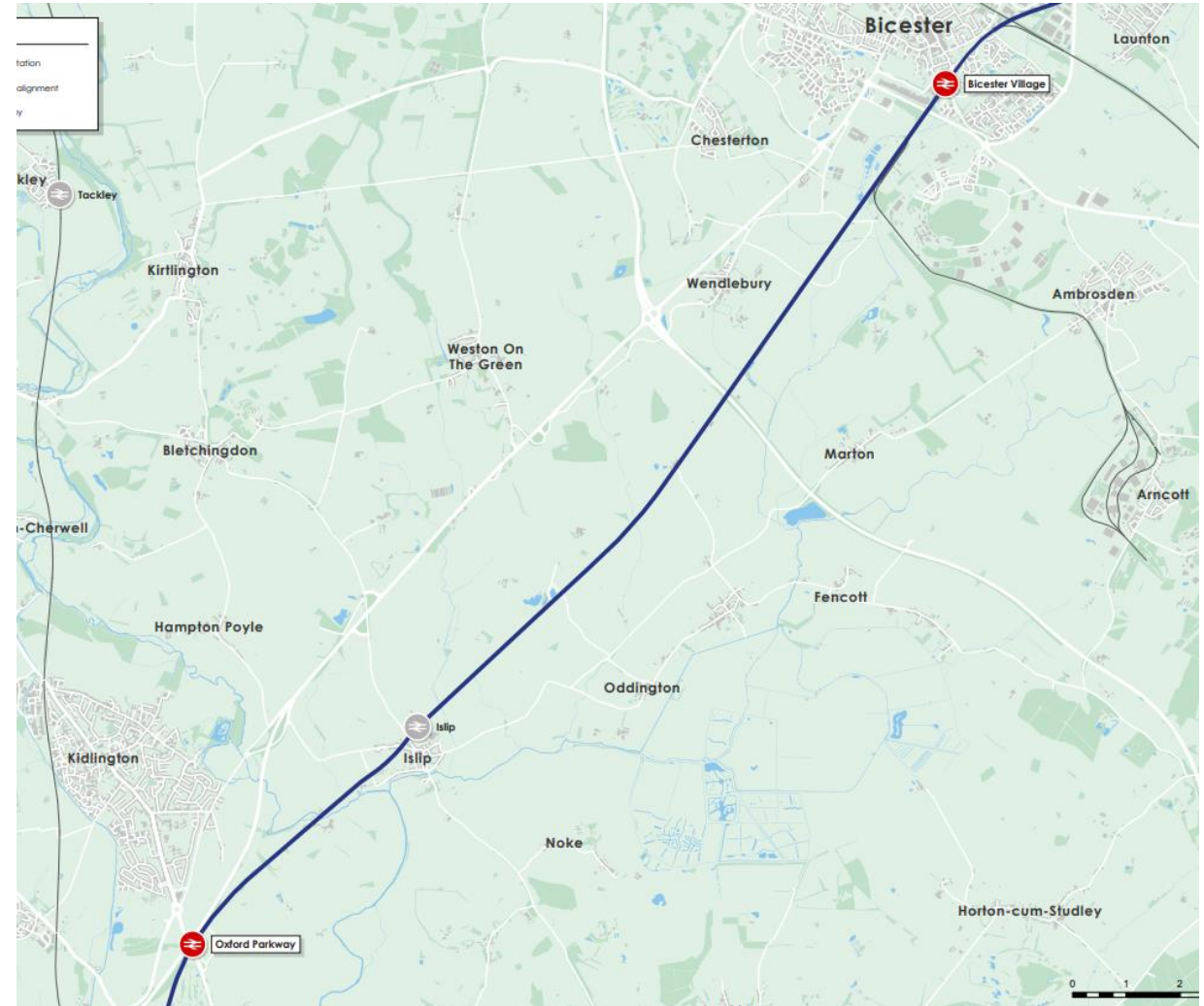




# Oxford to Bletchley

## Oxford to Bletchley

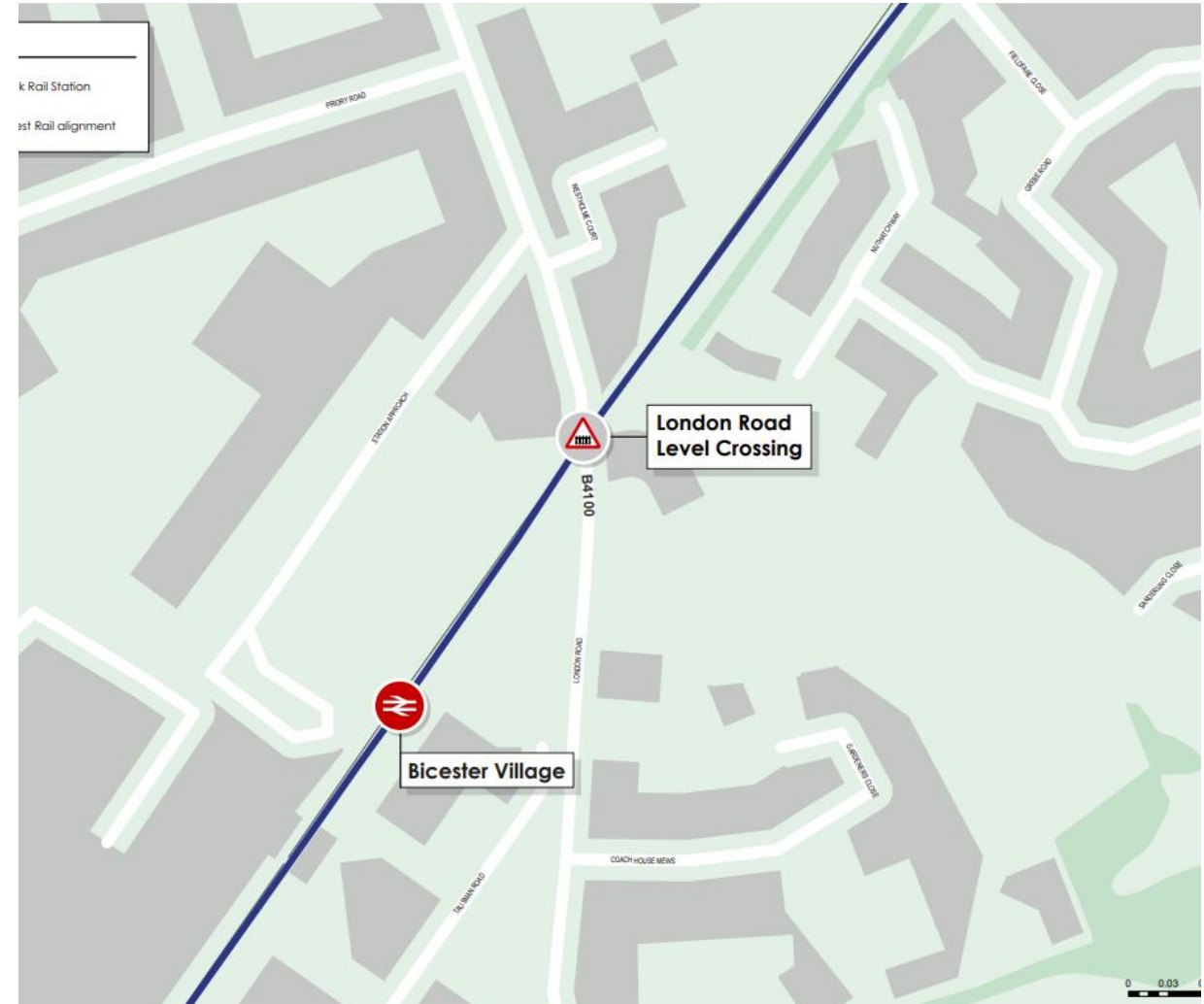
- Work to construct the railway between Bicester and Bletchley is underway
- DfT is currently in the process of procuring an operator to run these services from 2025
- We're considering what work is required at Oxford Parkway and Bicester Village stations
- We're also conducting further work to identify the best option for London Road level crossing in Bicester
- We're continuing work to identify the most suitable locations for passing loops between Oxford and Bletchley to allow faster trains to overtake slower stopping services safely.



# London Road level crossing

## London Road level crossing, Bicester

- At the 2021 consultation we presented six concepts for the London Road level crossing.
- Based on an anticipated service pattern for EWR trains, all involved closing the current crossing to motorised vehicles and providing alternative ways for vehicles, cyclists and pedestrians to cross the railway.
- These concepts were designed to improve safety, enable a faster and more reliable train service, and reduce traffic disruption.
- Since consultation, we've discounted five of these options and listening to your feedback, we're focusing on three key areas.



# London Road level crossing





# What happens next?

**We still have work to do and are carrying out more surveys and investigations to help us design the Project in more detail.**

These will be vital in providing information for our assessments, which will underpin the information presented at the statutory consultation our subsequent DCO application.

We'll develop our design based on feedback received from the two previous consultations and continuing environmental, economic and technical studies.

There will be further opportunity for you to comment on our proposals during the statutory consultation.



# What happens next?

## Future consultation

We plan to start the statutory consultation on the preferred route and associated infrastructure in the first half of 2024.

This will provide a further opportunity for you to share your views with us.

In the meantime, we'll continue to engage with local communities and stakeholders to help us refine the design before inviting the public to submit further feedback.

Consultation feedback will be carefully considered when finalising our proposals.

## Application for a Development Consent Order (DCO)

A Development Consent Order (DCO) is a piece of law that gives authority to East West Railway Company (EWR Co) to build the new railway.

This means that we're required to make an application for a DCO to obtain permission to construct and operate the railway.

The application will be made to the Planning Inspectorate who, on behalf of the Secretary of State for Transport, will appoint a panel to examine the application.

The examination will include consideration of the likely impacts of the Project on the environment and protected habitats.

Following the examination, a recommendation will be made to the Secretary of State for Transport, who will decide whether to give consent for the Project.

# Community events in your area

Date	Time	Venue
12 July 2023	2pm – 8pm	<b>John Paul II Centre</b> The Causeway, Bicester, OX26 6AW

# Questions or comments

# 05.

## Review of actions from meeting #2



# Completed actions

Meeting	No.	Action	Owner	Status
4	1	EWR Co to share details on how diversity and inclusivity measures have been included within EWR Co.	EWR Co	Complete
4	2	EWR Co to share details with Bicester Village station train operator on inadequate motorbike parking and use of 13-amp sockets for electric vehicles.	EWR Co	Complete
4	3	EWR Co to contact EWR Alliance and share concerns around lighting at the compound in Launton and the graffiti and sunken manhole cover at Charbridge Lane Crossing.	EWR Co	Complete

07.

Closing remarks, future  
meetings, process and topics

# Next Steps

Topics for future discussion

Meeting #5 onwards:

---

Agreed frequency: Quarterly meeting

---

Meeting notes circulated within 10 days, feedback requested within 10 days. 5 working days amending process, posted on Hub

# We're always here

All the Group's relevant documents will be available on its **Community Hub** site.

We will notify you when available.



# Got a question?

If you have any questions about the Group, please email:

[localrepresentativesgroups@eastwestrail.co.uk](mailto:localrepresentativesgroups@eastwestrail.co.uk)

If you have any questions about the project, please email:

[contact@eastwestrail.co.uk](mailto:contact@eastwestrail.co.uk)

Or you can also call us on **0330 134 0067**

# Guide to the Community Hub

# A Guide to the Community Hub



Go to [eastwestrail.co.uk](https://eastwestrail.co.uk),  
click 'Community Hub'

Click 'Read more' under 'Groups: Local Representatives Groups' to reach the LRG homepage and see what has been discussed and shared at all Local Representative Groups.

The screenshot shows the East West Rail website's 'Community Hub' page. The top navigation bar includes links for 'Our partners', 'Courses', 'Contracts', 'Library', 'community Hub' (which is highlighted), and 'Get in touch'. Below the navigation bar, the 'east west rail' logo is on the left, and a list of links (What is EWR, Benefits, Proposed Route, Our Approach, News) is on the right. The main content area features a large blue banner with the text 'East West Rail will make it easier to reach the things that matter most.' and a sub-headline 'From connecting people with jobs and education to simply seeing friends and family, East West Rail will help communities flourish sustainably.' To the right of the banner is a photo of three young people in blue shirts. Below the banner are two smaller images: one of railway tracks and another of a person in a blue shirt. A large blue box on the right contains the 'Welcome to the Community Hub' message, explaining it's an interactive space for sharing news and thoughts. It includes a link to 'register here' and a 'Read more' button. Below this, a 'Get involved' section features two cards: 'Accessibility Advisory Panel' and 'Groups: Local Representatives Groups'. The 'Groups' card is highlighted with a blue border and contains a 'Read more' button.

Our partners Courses Contracts Library **community Hub** Get in touch

What is EWR ~ Benefits Proposed Route ~ Our Approach ~ News ~ | Q

**east west rail**

**East West Rail will make it easier to reach the things that matter most.**

From connecting people with jobs and education to simply seeing friends and family, East West Rail will help communities flourish sustainably.

↓

**Welcome to the Community Hub**

It's an interactive space for us to share news on local events, a platform for you to share thoughts and where you can discover more about initiatives in and around the communities that East West Rail will serve.

First, you'll need to [register here](#). Your information will be kept safe and your identity anonymous.

Ready to get going? Pick a topic and join in the conversation below.

**Get involved**

**Accessibility Advisory Panel**

We want to build a better and more inclusive railway which works for everyone.

[Read more](#)

**Groups: Local Representatives Groups**

Learn about what's being discussed and shared at your nearest Local Representatives Group.

[Read more](#)

# A Guide to the Community Hub



Local Representatives Groups home page contains:

- Contact information
- Full route map
- Information for all 15 Local Representative Groups can be found by clicking the Group name

Welcome to the Local Representatives Groups home page



Here at East West Railway Company (EWR Co), we're passionate about hearing what local representatives and their communities think about East West Rail (EWR). It means we can work together as we build a successful project that will deliver shorter journey times, lower transport costs and ease pressure on local roads while bringing people closer to the things that matter most – jobs, friends and family.

We've set up 15 Local Representatives Groups in all areas along the route where we will deliver EWR. The Groups include Councillors, Parish and Town Councils, and representatives from EWR Co. They offer an open forum for discussions – a place to share information, ask questions, cover any concerns people might have and get answers. They also allow us to give project updates and understand details of all relevant local issues.

The Groups are just one of the ways local communities can connect with our team through their representatives during all stages of the project, including planning, construction and operation of the railway.

#### Find out what's happening in each Group

You can stay up to date with what's happening in each Group by using the links below. Each Group has its own dedicated site which include agendas, meeting summary notes, Terms of Reference, maps, presentations, and other reference material to support the meetings.

Local Representatives Groups:

- [Bedford Marston Vale](#)
- [Bedford Town](#)
- [Bedfordshire](#)
- [Bicester Town](#)
- [Bletchley / Milton Keynes South](#)
- [Buckinghamshire](#)
- [Cambourne & Surrounding Areas](#)
- [NEW: Cambridge City & Surrounding Areas](#)
- [Central Bedfordshire / Marston Vale](#)
- [Huntingdonshire / South Cambridgeshire](#)
- [Milton Keynes North](#)
- [NEW: Oxford City & Surrounding Areas](#)
- [Sandu, Tempsford & St Neots](#)
- [South Cambridgeshire East](#)
- [South Cambridgeshire West](#)

#### Get In Touch

**Sarah Jacobs**

Local Representatives Groups

Engagement Manager

Email [localrepresentativesgroups@eastwestrail.co.uk](mailto:localrepresentativesgroups@eastwestrail.co.uk)

SJ

#### Type of Conversation

##### Type of conversation

Every time we start a new topic through the Community Hub, we'll let you know what type of conversation we're starting.

The type of conversation for this project is:



**To discuss:** Here we'll ask you for your ideas and thoughts as part of an informal discussion on specific topics.

Learn more about [East West Railway Company's Types of Conversation](#)

#### Local Representatives Groups - Full Route Map

Map - Full Route (October 2022) (1.21 MB) (pdf)

#### Key Dates

Bedfordshire Group - Meeting #8  
**07 February 2023**

Bedfordshire Group - Meeting #7  
**07 December 2022**

[more...](#)

#### Groups that have merged

☒ Cambridge City

☒ Cambridge & Surrounding Areas

☒ Oxford City

☒ Oxford & Surrounding Areas

# A Guide to the Community Hub



## Group pages contain:

- A record of all meeting dates
- Agendas, meeting notes and supporting materials
- Group Maps
- Group members list
- Group Terms of Reference

## Welcome to the South Cambridgeshire West Local Representatives Groups page



At East West Railway Company (EWR Co), we're passionate about hearing what local representatives, and their communities, think about East West Rail (EWR) so we can, together, successfully build a project that will bring faster journey times, lower transport costs and ease pressure on local roads. This will bring people closer to the things that matter most – jobs, friends, and family.

We've set up 15 Local Representatives Groups along the route where we will deliver the East West Rail project to help local communities connect with us through their representatives. The Groups include Councillors, Parish and Town Councils and representatives from EWR Co.

This is the page for the South Cambridgeshire West Group. The Group brings together all the Parishes and Councillors from the area in South Cambridgeshire District centred around the EWR alignments East of the proposed locations for Cambourne Station on the way to approaching Cambridge.

### Group meeting schedule:

Meeting #1 – Monday 14 February 2022 – Welcome Meeting and Introduction to the Group

Meeting #2 – Monday 11 July 2022 – Development Consent Order (DCO) Process

Meeting #3 – Wednesday 26 October 2022 – Freight Strategy Process, and Traction Strategy Process

Meeting #4 – Monday 27 March 2023 – The Business Case Process

### Find out what's happening in the South Cambridgeshire West Group.

You can stay up to date with what's happening in this Group by viewing the documents on the right of this page which include agendas, meeting notes, Terms of Reference, maps, presentations and other reference material to support the meetings. New, relevant documents will be uploaded after each meeting.

You can also find out more about the Local Representatives Groups and access other Groups' pages on our [Local Representatives Groups welcome page](#).

### Agenda, Meeting Notes & Supporting Materials

- ☒ Agenda, Meeting Notes & Supporting Materials

### Get in Touch

**Sarah Jacobs**

Local Representatives Groups  
Engagement Manager

Email [localrepresentativesgroups@eastwestrail.co.uk](mailto:localrepresentativesgroups@eastwestrail.co.uk)

SJ

### Type of Conversation

#### Type of conversation

Every time we start a new topic through the Community Hub, we'll let you know what type of conversation we're starting.

#### The type of conversation for this project is:



**To discuss:** Here we'll ask you for your ideas and thoughts as part of an informal discussion on specific topics.

Learn more about [East West Railway Company's Types of Conversation](#)

### Local Representatives Groups - Maps

- ☐ South Cambridgeshire West LRG - Full Route Map (October 2022) (1.21 MB) (pdf)
- ☐ South Cambridgeshire West LRG - Electoral Divisions Map (2.67 MB) (pdf)
- ☐ South Cambridgeshire West LRG - Parishes Map (2.61 MB) (pdf)
- ☐ South Cambridgeshire West LRG - Wards Map (2.54 MB) (pdf)

### Local Representatives Groups - Membership

- ☐ South Cambridgeshire West LRG - Representatives List (109 KB) (pdf)



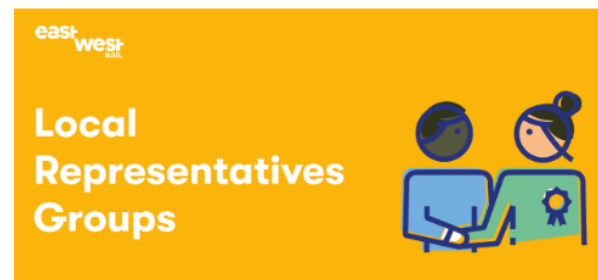
# A Guide to the Community Hub



Group meeting materials are made available:

- **1 week** prior to the meeting – Agenda, action tracker
- **10 days** after the meeting – Meeting slides
- **25 days** after the meeting – Final meeting summary note

## Welcome to the South Cambridgeshire West Local Representatives Groups page



At East West Railway Company (EWR Co), we, local representatives, and their communities can, together, successfully build a project that transport costs and ease pressure on local roads things that matter most – jobs, friends, and families.

We've set up 15 Local Representatives Groups along the route local communities connect with us through their representative Councils and representatives from EWR Co.

This is the page for the South Cambridgeshire West Group. It Councillors from the area in South Cambridgeshire District and locations for Cambourne Station on the way to approaching the

### Group meeting schedule:

Meeting #1 – Monday 14 February 2022 – Welcome Meeting c

Meeting #2 – Monday 11 July 2022 – Development Consent O

Meeting #3 – Wednesday 26 October 2022 – Freight Strategy

Meeting #4 – Monday 27 March 2023 – The Business Case Ph

### Find out what's happening in the South Cambridgeshire V

You can stay up to date with what's happening in this Group I which include agendas, meeting notes, Terms of Reference, m support the meetings. New, relevant documents will be uploa

You can also find out more about the Local Representatives G [Representatives Groups welcome page](#).

Page last updated: 14 Mar 2023, 12:09 PM

## Agenda, Meeting Notes & Supporting Materials

### Meeting 1

- ☐ South Cambridgeshire West LRG - Meeting #1 - Agenda (20.6 KB) (pdf)
- ☐ South Cambridgeshire West LRG - Meeting #1 - Slides (1.59 MB) (pdf)
- ☐ South Cambridgeshire West LRG - Meeting #1 - Meeting Summary Note (193 KB) (pdf)

### Meeting 2

- ☐ South Cambridgeshire West LRG - Meeting #2 - Agenda (138 KB) (pdf)
- ☐ South Cambridgeshire West LRG - Meeting #2 - Action Tracker (118 KB) (pdf)
- ☐ South Cambridgeshire West LRG - Meeting #2 - Slides (1.41 MB) (pdf)
- ☐ South Cambridgeshire West LRG - Meeting #2 - Meeting Summary Note (279 KB) (pdf)

### Meeting 3

- ☐ South Cambridgeshire West LRG - Meeting #3 - Agenda (128 KB) (pdf)
- ☐ South Cambridgeshire West LRG - Meeting #3 - Action Tracker (120 KB) (pdf)
- ☐ South Cambridgeshire West LRG - Meeting #3 - Slides (1.72 MB) (pdf)
- ☐ South Cambridgeshire West LRG - Meeting #3 - Meeting Summary Note (266 KB) (pdf)

### Meeting 4

- ☐ South Cambridgeshire West - Meeting #4 - Agenda (142 KB) (pdf)
- ☐ South Cambridgeshire West - Meeting #4 - Action tracker (201 KB) (pdf)

### Agenda, Meeting Notes & Supporting Materials

- ☒ Agenda, Meeting Notes & Supporting Materials

### Get In Touch

Sarah Jacobs

Local Representatives Groups  
Engagement Manager

Email: [localrepresentativesgroups@eastwestrail.co.uk](mailto:localrepresentativesgroups@eastwestrail.co.uk)

SJ

### Type of Conversation

Type of conversation