

**east**  
**west**  
**RAIL**

**[eastwestrail.co.uk](http://eastwestrail.co.uk)**

# Cambourne & Surrounding Areas Local Representatives Group

## Meeting 5

15 June 2023



# 01. Welcome and today's agenda

Sarah Jacobs

**Local Representatives Group Manager**

# Today's agenda

01.  
Welcome and today's agenda

---

02.  
Housekeeping

---

03.  
General Updates

---

04.  
Topic – Route Update Announcement

---

05.  
Review of actions from meeting #4

---

06.  
Closing remarks, future meetings and topics

---

# 02. Housekeeping

# Housekeeping

## Thank you for joining

This is a virtual meeting.

Please display your full name as when you registered to attend – this can be done through the 'Participants' section.

To help everyone feel part of the discussion, please feel free to turn your camera on during the meeting if you can.

Please use the 'Raise Hand' function to raise a question during the meeting, found in the bottom ribbon (under the 'Reactions' option).



**Display your full name in username**



**Please use the mute function**



**Use the 'Raise Hand' function if you want to raise a point during the meeting**



**Please do put your camera on if possible**

# 03. General updates

# Since our last meeting

- Local elections held: Welcome to the newly elected LRG members.
- East West Rail Accessibility Advisory Panel met for their first session in April.
- On 26th May, we published the route update for East West Rail (EWR).
- We have now published a range of [Factsheets](#) that you may also find useful.

Accessibility and inclusion	<a href="#">Download PDF</a>
Active travel	<a href="#">Download PDF</a>
Approaching Cambridge	<a href="#">Download PDF</a>
Approach to powering EWR trains	<a href="#">Download PDF</a>
Assessment factors	<a href="#">Download PDF</a>
Connecting with Bedford	<a href="#">Download PDF</a>
Benefits of East West Rail	<a href="#">Download PDF</a>
Embankments and viaducts	<a href="#">Download PDF</a>
Introducing the route update	<a href="#">Download PDF</a>
Our approach to land and landowners	<a href="#">Download PDF</a>
Marston Vale Line	<a href="#">Download PDF</a>
Our approach to the environment	<a href="#">Download PDF</a>
Our approach to freight	<a href="#">Download PDF</a>
Response to 2021 Consultation	<a href="#">Download PDF</a>
The Affordable Connections project	<a href="#">Download PDF</a>



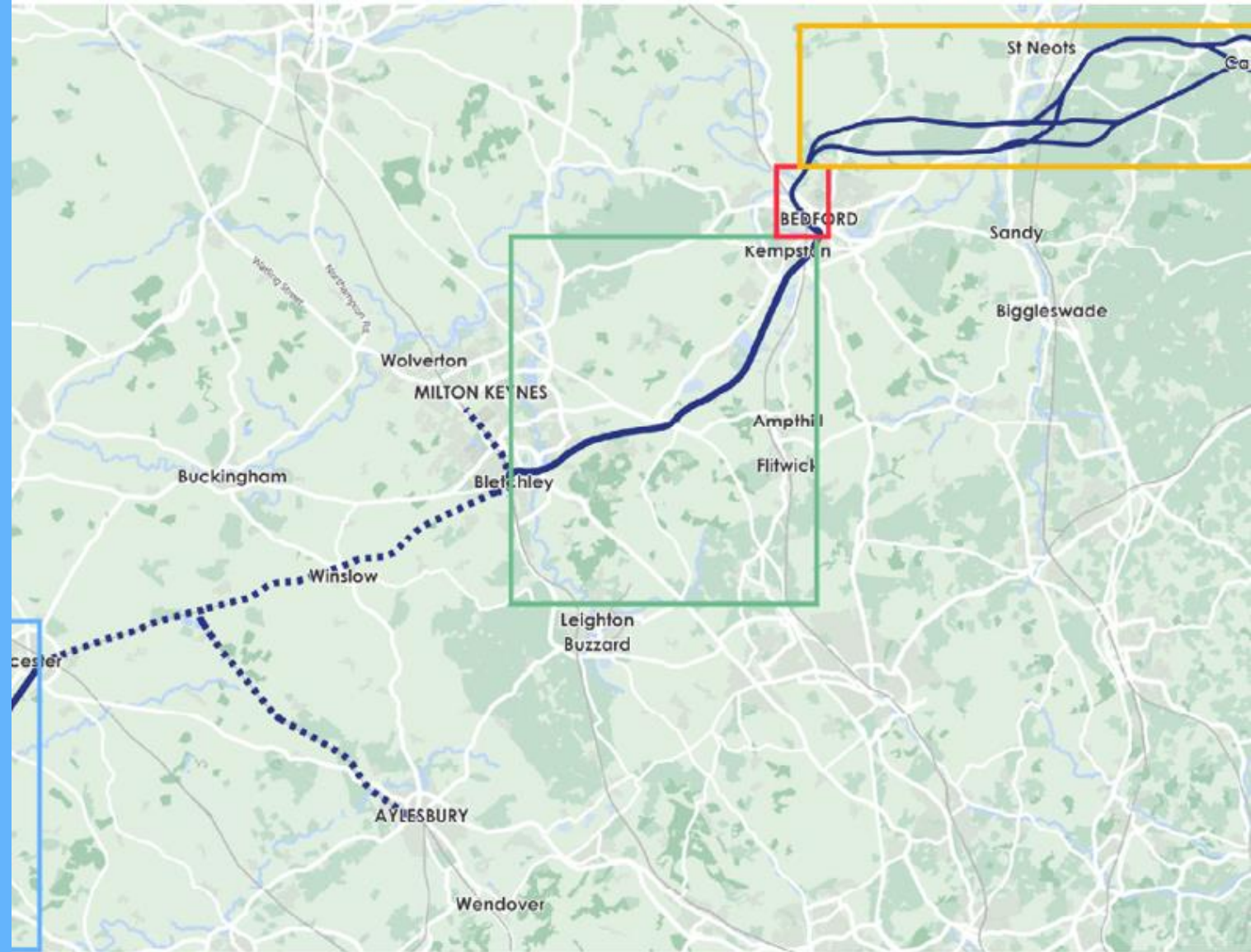
# Introduction

Since the non-statutory public consultation on East West Rail in 2021, we've carefully reviewed feedback and used it, alongside a strategic review of the Project, to guide our developing plans to design a railway that meets the needs of communities between Oxford and Cambridge.

We've made some changes to the proposals we presented in 2021, which take account of:

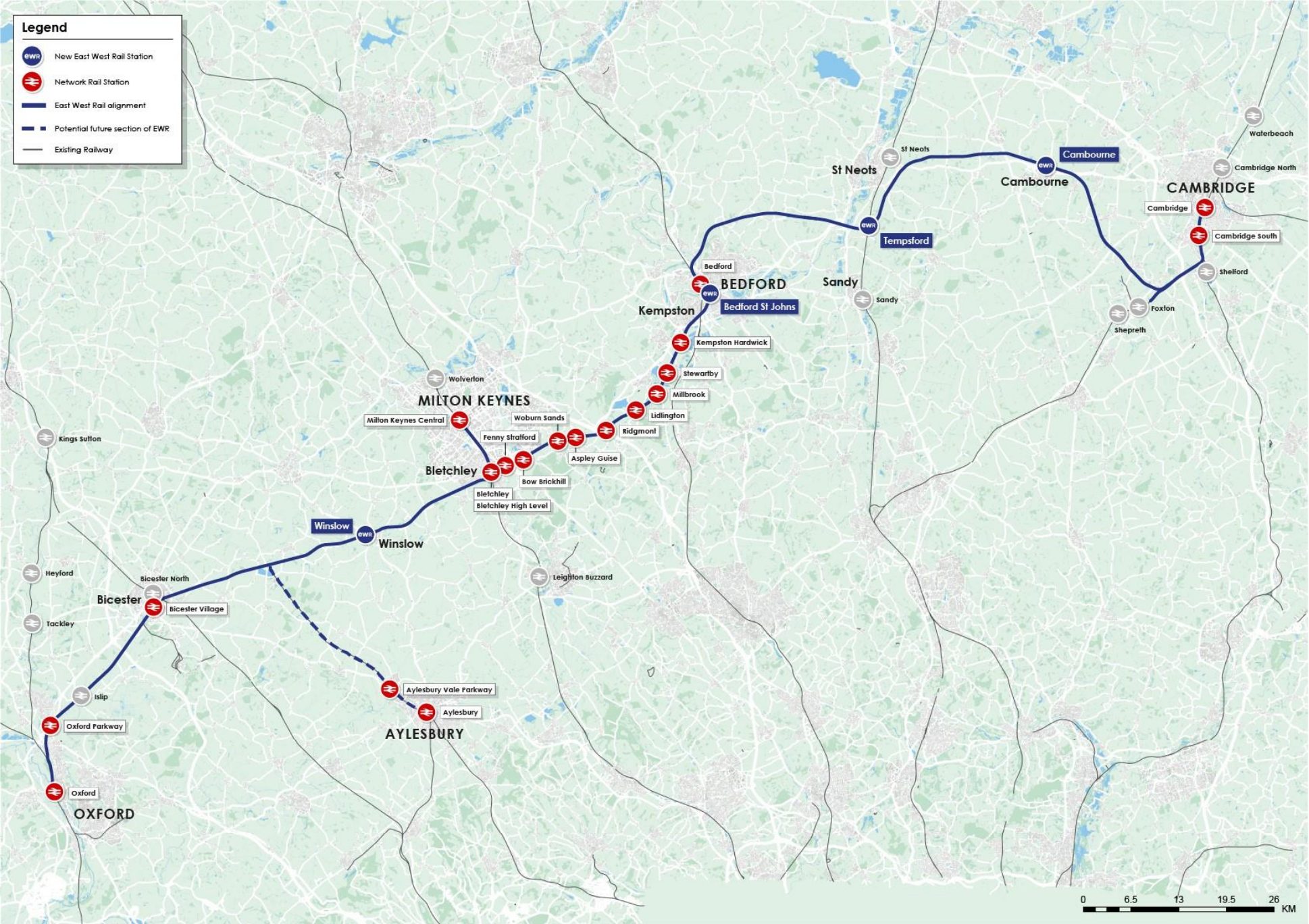
- Feedback received during and since the 2021 consultation
- Further technical and environmental work
- The analysis undertaken as part of the Affordable Connections Project

Following that work, we are now sharing a number of updates about EWR.



- Project section A:  
Oxford to Bicester
- Project section B:  
Bicester to Marston Vale Line
- Project section C:  
Bedford







# What have we announced?

## Route Update Report

The report describes how the proposals for EWR have developed since the 2021 consultation and what our preferred plans for certain sections of the railway are, including:

- Route preferences
- Route-wide matters
- What happens next



## Associated Reports

Alongside the Route Update Report, we're also publishing:

- The 2021 Consultation Feedback Report
- The EWR Economic and Technical Report
- The 2023 Need to Sell Property Scheme



# A little more on the Need to Sell Scheme

## 2023 Route Update Announcement

We have launched our Need to Sell Property Scheme, for home and property owners with a compelling need to sell.

This will allow people to sell their home or small business to EWR Co while the Project is in development and delivery, where they been unable to do so other than at a substantially reduced value because of the EWR Project.

Telephone number – 0330 838 7583

Email – [land@eastwestrail.co.uk](mailto:land@eastwestrail.co.uk)

Postal Address:

One Grafton Mews

Midsummer Boulevard

Milton Keynes

MK9 1FB



# 04.

## Topic- Route Update Announcement

Tristan Lincoln-Gordon, Environment & Sustainability  
Manager

# Bedford to Cambourne

## Connecting Bedford and Cambourne

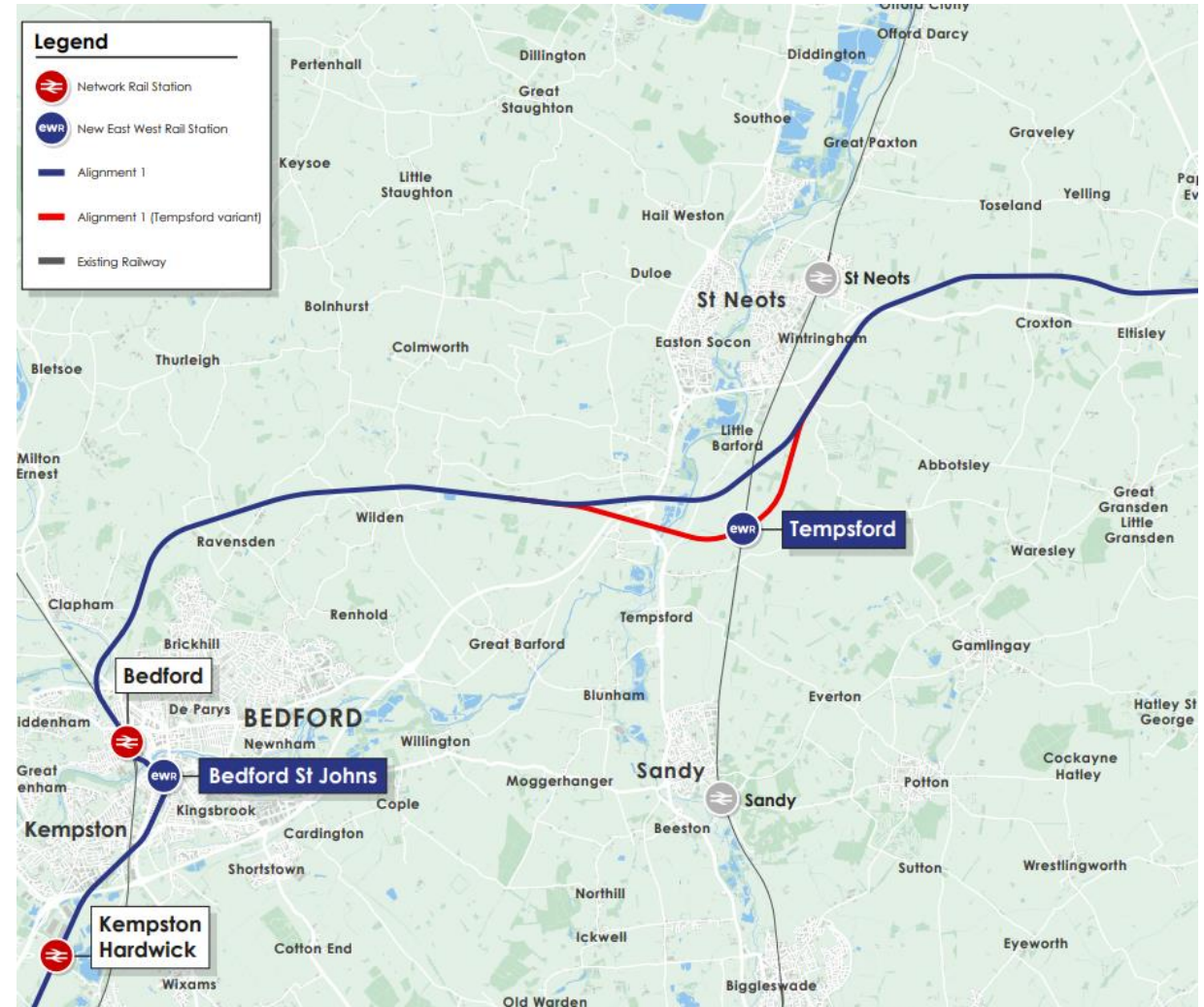
We've reviewed feedback from the 2021 public consultation and undertaken further analysis.

This found that **Alignment 1** performs better than all other alignments we've considered for this section of the route.

We've also identified a significant opportunity for economic growth around the interchange between EWR and East Coast Main Line (ECML).

This work has found that a station at Tempsford should be preferred to one at St Neots South, even though it is not served by existing designs for Alignment 1.

We've therefore developed a local variation of the alignment – known as Alignment 1 (Tempsford variant) – which will be taken forward for further development.





# Tempsford

## Alignment 1 (Tempsford variant)

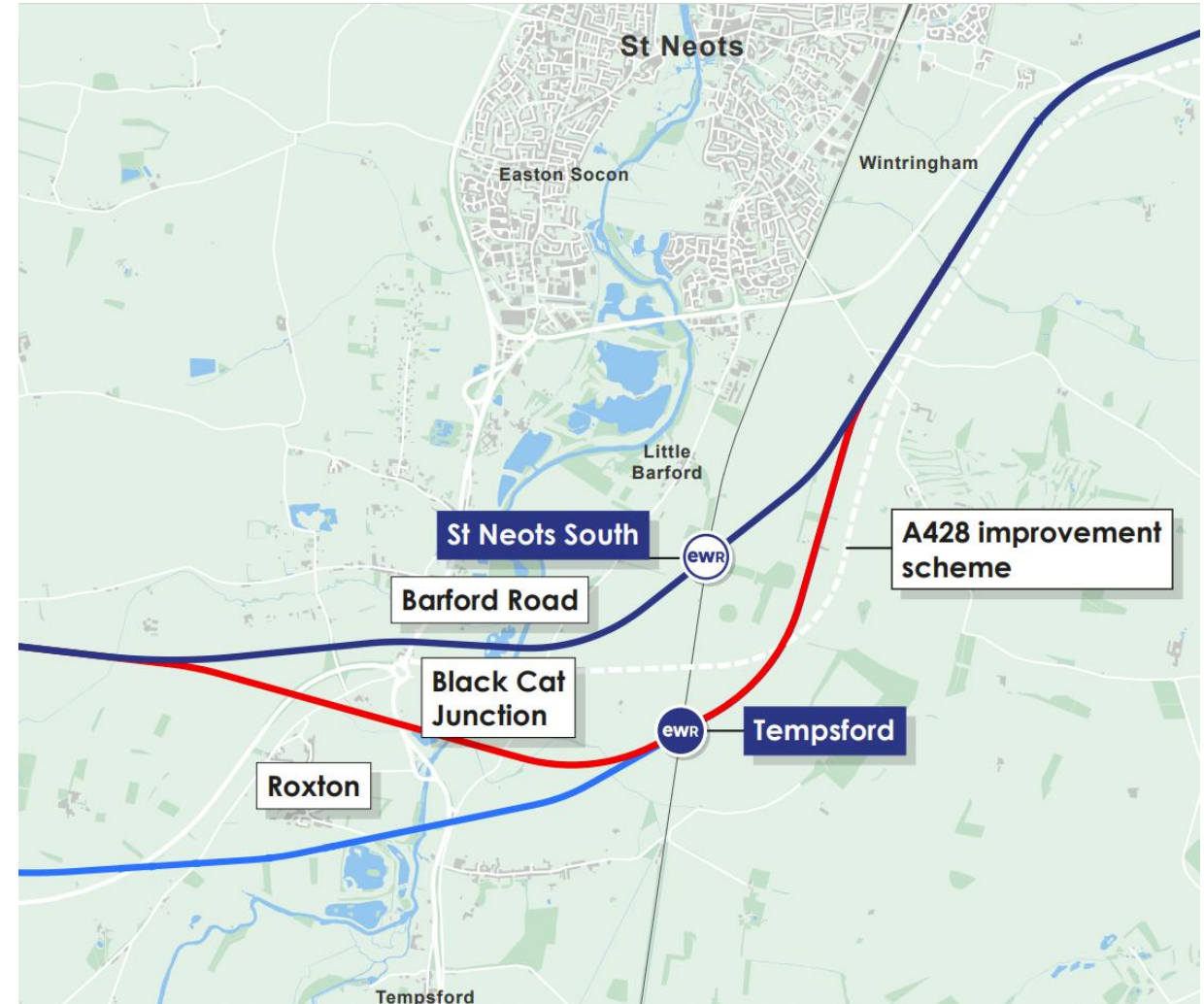
The varied section is shown by the red line on the image to the right.

It's approximately 1km longer than Alignment 1 but would not be materially different in environmental terms.

It would avoid encircling communities in Roxton and environmental impacts caused by Alignment 9.

A new station at Tempsford would still unlock the benefits of Alignment 1 elsewhere on the route.

This has led us to an emerging preference for the localised variation of Alignment 1 to serve a new station at Tempsford, which we'll take forward for further surveys, environmental assessment and design development.



# New station at Cambourne

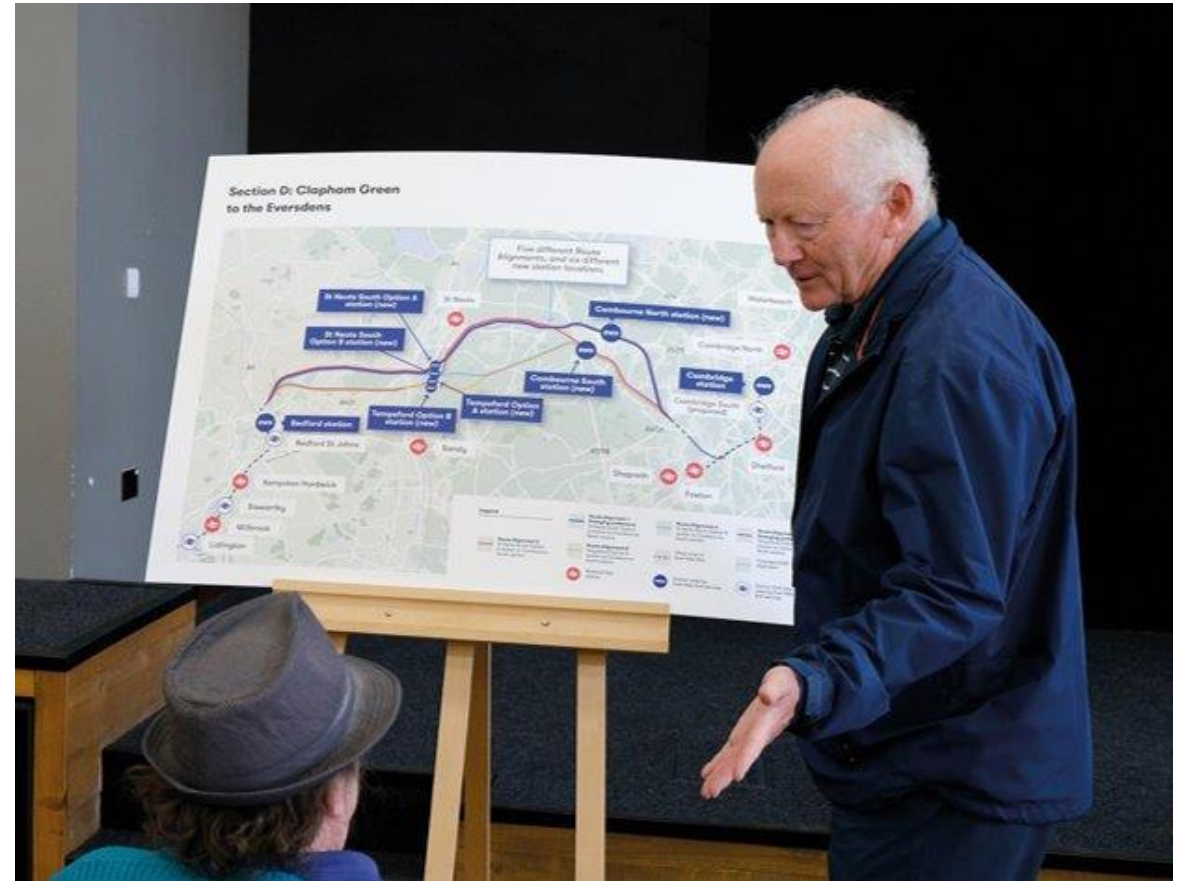
## A new station north of Cambourne

A station at Cambourne South would require a greater level of mitigation to protect environmental and heritage assets.

This would constrain development at Cambourne South, so alignments serving Cambourne North perform better in relation to housing and economic growth.

A station north of Cambourne would not be expected to constrain development to the north of the A428, although it would be separated from the village of Cambourne.

Routes serving a Cambourne North station would run alongside the A428 potentially allowing the scheme to benefit from a shared travel corridor.





# Cambridge

## Route Update

- The approach to Cambridge will be made from a southern route.
- Despite the northern approach potentially being cheaper than the south, it doesn't deliver the same economic benefits.
- Cambridge Biomedical Campus is a driver for economic growth, creating high value jobs and attracting investment.
- Three times as many jobs within walking distance of Cambridge South, compared to Cambridge North.
- Biomedical Campus has 'triple helix' of the public and private sectors, combined with academia, which characterise the most successful science clusters around the globe. It's also part of a wider life sciences cluster growing south of Cambridge. These circumstances aren't matched in the north.
- More traffic congestion to relieve in the south than north.
- Material reductions in height of embankments and viaducts through South Cambridgeshire.



# What happens next?

**We still have work to do and are carrying out more surveys and investigations to help us design the Project in more detail.**

These will be vital in providing information for our assessments, which will underpin the information presented at the statutory consultation our subsequent DCO application.

We'll develop our design based on feedback received from the two previous consultations and continuing environmental, economic and technical studies.

There will be further opportunity for you to comment on our proposals during the statutory consultation.



# What happens next?

## Future consultation

We plan to start the statutory consultation on the preferred route and associated infrastructure in the first half of 2024.

This will provide a further opportunity for you to share your views with us.

In the meantime, we'll continue to engage with local communities and stakeholders to help us refine the design before inviting the public to submit further feedback.

Consultation feedback will be carefully considered when finalising our proposals.

## Application for a Development Consent Order (DCO)

A Development Consent Order (DCO) is a piece of law that gives authority to East West Railway Company (EWR Co) to build the new railway.

This means that we're required to make an application for a DCO to obtain permission to construct and operate the railway.

The application will be made to the Planning Inspectorate who, on behalf of the Secretary of State for Transport, will appoint a panel to examine the application.

The examination will include consideration of the likely impacts of the Project on the environment and protected habitats.

Following the examination, a recommendation will be made to the Secretary of State for Transport, who will decide whether to give consent for the Project.

# Community events in your area

Date	Time	Venue
<b>22 June 2023</b>	2pm – 8pm	<b>Eversden Village Hall</b> 4 Chapel Road, Great Eversden, CB23 1HP
<b>26 June 2023</b>	2pm – 8pm	<b>Harston Village Hall</b> 20 High Street, Harston, CB22 7PX
<b>11 July 2023</b>	2pm – 8pm	<b>Cambridge Belfry Hotel</b> Back Lane, Cambourne, CB23 6BW
<b>17 July 2023</b>	2pm – 8pm	<b>Cambridge City</b> The Graduate Cambridge, Granta Place, Mill Lane Cambridge, CB2 1RT
<b>20 July 2023</b>	2pm – 8pm	<b>Love's Farm</b> 17 Kester Way, St Neots, PE19 6SL

# Questions or comments

# 05.

## Review of actions from meeting #4

# Actions

Meeting	No.	Action	Owner	Status
#4	1	EWR Co to develop presentation on the inclusive journey experience, including door-to-door connectivity for a future meeting.	EWR Co	In progress – topic has been added to list as future topics for discussion
#4	2	EWR Co to share a map of the Local Representatives Groups with meeting attendees.	EWR Co	Complete

06.

Closing remarks, future  
meetings and topics



# Next Steps

Topics for future discussion

Meeting #6 onwards: Environmental Impact Assessment (EIA), Traction Strategy, Freight, and Inclusive journey experience / door-to-door connectivity

---

Agreed frequency: **Every 12 weeks**

---

Meeting notes circulated within 10 days, feedback requested within 10 days. 5 working days amending process, posted on Hub

---

# We're always here

All the Group's relevant documents will be available on its **Community Hub** site.

We will notify you when available.



# Got a question?

If you have any questions about the Group, please email:

[localrepresentativesgroups@eastwestrail.co.uk](mailto:localrepresentativesgroups@eastwestrail.co.uk)

If you have any questions about the project, please email:

[contact@eastwestrail.co.uk](mailto:contact@eastwestrail.co.uk)

Or you can also call us on **0330 134 0067**