

east
west
RAIL

eastwestrail.co.uk



Huntingdonshire / South Cambridgeshire Local Representatives Group

Meeting #6

26 October 2023

01. Welcome and today's agenda

Today's agenda

01.
Welcome and today's agenda

02.
Housekeeping

03.
General Updates

04.
Review of actions from previous meetings

05.
Topic – Approach to *how* we engage with
you and your communities

06.
Q&A with programme manager

07.
Closing remarks, future meetings and
topics

02. Housekeeping

Housekeeping

Thank you for attending

This is a virtual meeting.

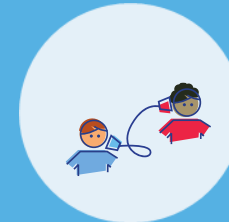
Please display your full name as when you registered to attend – this can be done through the 'Participants' section.

To help everyone feel part of the discussion, please feel free to turn your camera on during the meeting if you can.

Please use the 'Raise Hand' function to raise a question during the meeting, found in the bottom ribbon (under the 'Reactions' option).



Display your full name in username



Please use the mute function



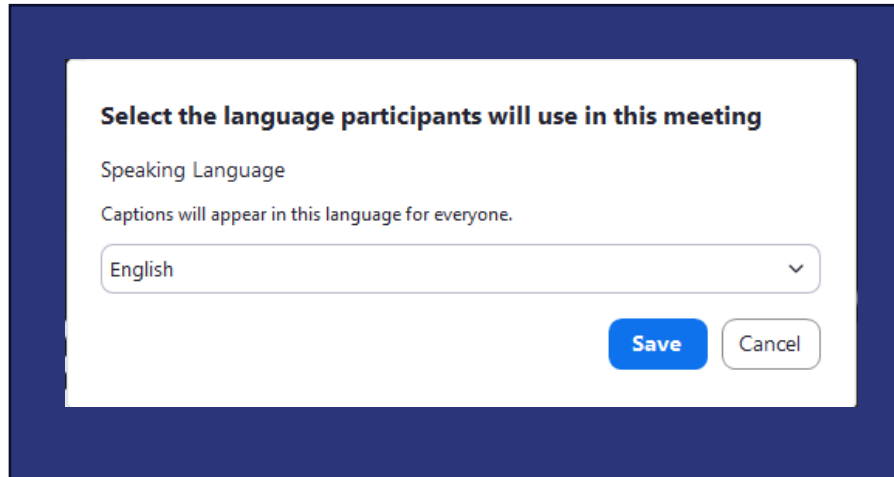
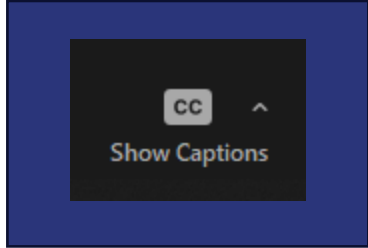
Use the 'Raise Hand' function if you want to raise a point during the meeting



Please do put your camera on if possible

Enable captions

A 'How to' Guide

A screenshot of a dialog box titled 'Select the language participants will use in this meeting'. Inside the dialog, there is a section labeled 'Speaking Language' with the text 'Captions will appear in this language for everyone.' Below this is a dropdown menu currently showing 'English'. At the bottom right of the dialog are two buttons: 'Save' (in blue) and 'Cancel' (in white with a grey border).

Please note that the captions are auto-generated in real-time and may not be wholly accurate.



Click 'Show Captions'



When prompted to select language, click your preference from the drop-down list and then click 'Save'.

03. General updates

General updates

Community drop-in events

- 12 community events held across June and July
- Two of these events added following feedback (Cambridge and Bletchley)
- Over 2300 attendees, including over 280 at the Cambourne and St Neots events.
- Your questions answered [videos](#)

Accessibility Advisory Panel

- We have recently held our third [AAP](#) meeting where the panel met key stakeholders from EWR Co and were able to give feedback to support the design and development requirements
- The AAP will continue to be involved in activities as we progress towards DCO including journey shadowing across the programme

Videos



Your Questions Answered 14

As part of our community drop-in events, we visited Bletchley. In this video, our Head of External Affairs answers your questions on the plans for the Bletchley station, an eastern entrance into Bletchley station and much more. [🔗](#)



Your Questions Answered 13

Our CEO, Beth West was at the St Neots community drop-in event to answer questions on why St Neots wasn't included in our plans, accessing the new station at Tempsford and whether trains from other lines will access the EWR network. [🔗](#)

04.

Review of actions from previous meetings

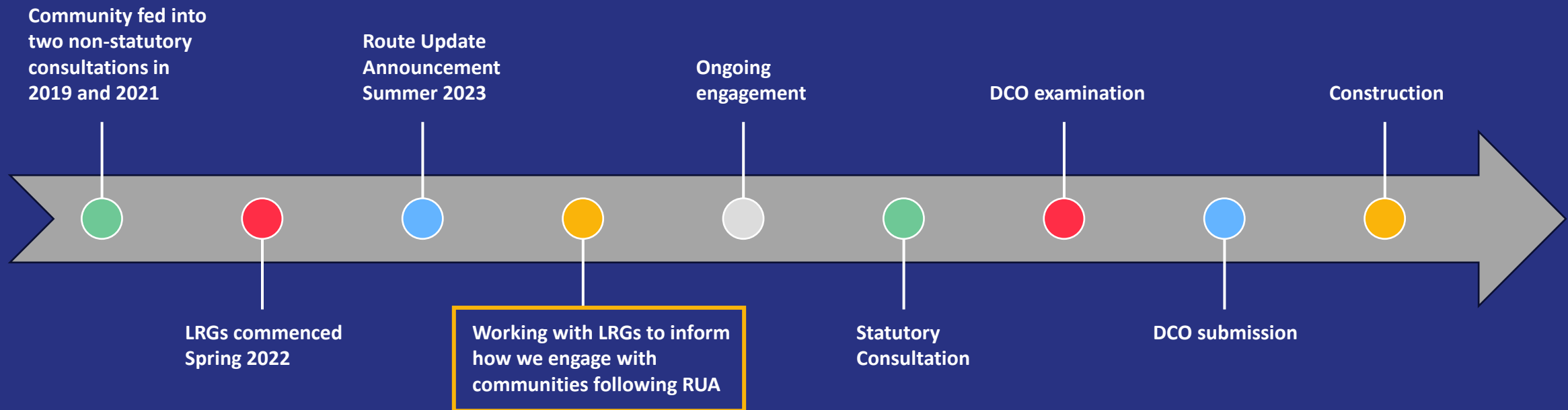
Actions

No actions were recorded at this meeting

05.

**Topic- Approach to how we engage with
you and your communities**

Where we are in the process



Approach to how we engage with you and your communities

Interactive session



We want you to help us understand how we can design more informative and productive engagement with you.



At the end of the session, we can look through your suggestions and find common themes.



Please raise your hand and say your suggestions or write your thoughts into the chat box and your input will be noted by the team on the screen.

LRGs...

We want to hear from you about your community and how we can work more closely with you.



1- Learning about your communities

Who should we be engaging with in your communities?

**Environment
groups**

**Community
groups**

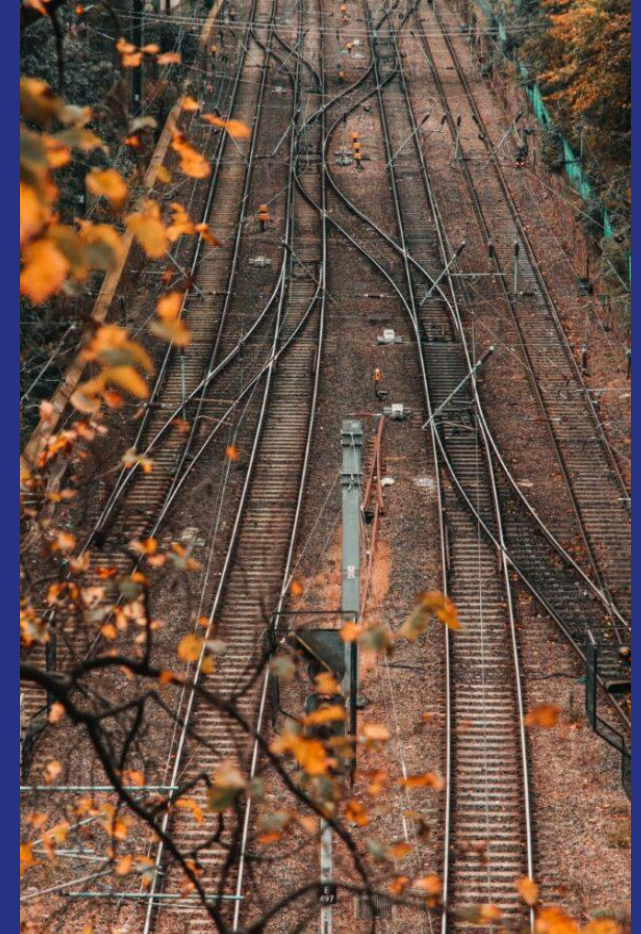
**Anyone else in the local
community we may not
be aware of?**

For example, shift workers at
local organisations who may
not be able to attend our
event slots

Specific demographics within
the local community

**Accessibility
groups**

Local charities



2.a- Communicating and engaging with you and your communities

Did you attend the community drop-in events held across summer? What worked well? What could we do better?

Venues

**Use and
layout of
space**

**Timings and
number of
events**

Materials

**Publicity of
events**

2 a- Communicating and engaging with you and your communities

Venues

Use/layout
of space

Timings and
number of events

Materials

Publicity of
events

2.b- Communicating and engaging with you and your communities

How can we work more closely with you as LRG members to help disseminate information across your communities?

How would you like information to be shared?

Do you receive the community newsletters?

Are there any local poster locations we should explore?

Are there any other communications channels or local circulations we should be aware of and utilise?

Are there any other ideas you have as an LRG member for how we could engage better with local communities?

How do you find the communications with you as LRG members?

Are there any other types of updates you would like to receive?

2.b- Communicating and engaging with you and your communities

Community
newsletters

Poster
locations

Local comms
channels

LRG comms

LRG updates

06.

Q&A with programme manager

Questions:

07.

**Closing remarks, future
meetings and topics**

Topics for future discussion

Future meetings: Wider benefits for the local area (without a station); engagement activities to feed into design ahead of statutory consultation

Discussion: Other topics for future meetings

The interface with EWR and National Highways A428

Black cat to Caxton Gibbet Scheme

Door to door connectivity

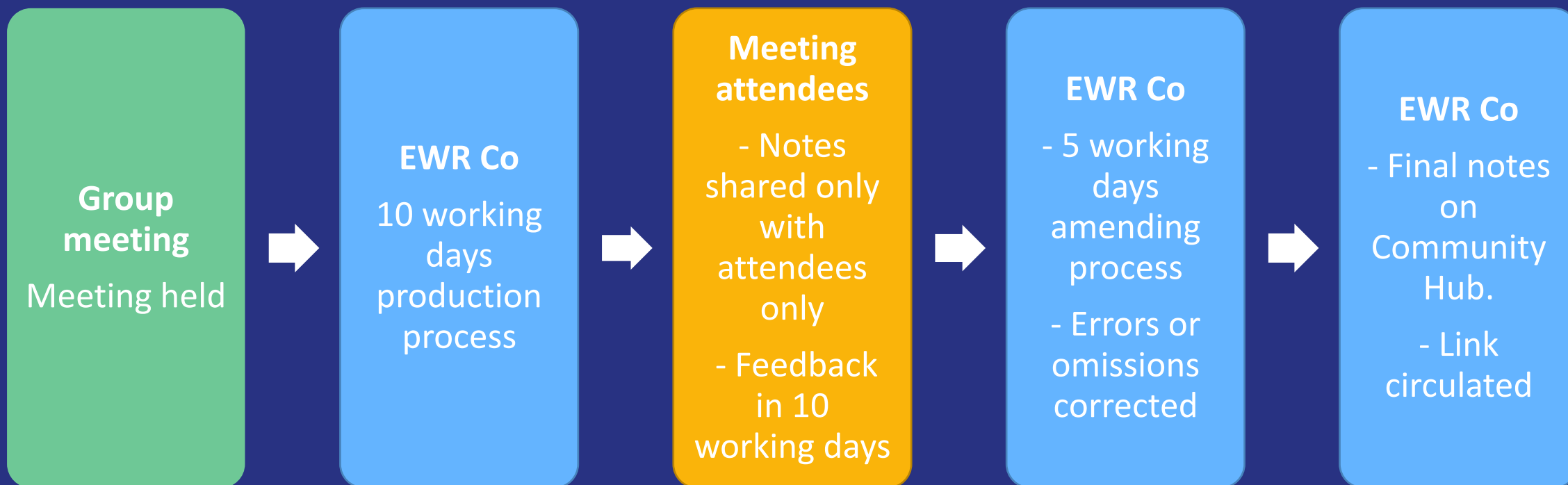
Embankments and viaducts

Agreed frequency: Quarterly meeting

Outcomes:

Actions:

Creating meeting notes



We're always here

All the Group's relevant documents will be available on its **Community Hub** site.

We will notify you when available.



Got a question?

If you have any questions about the Group, please email:

localrepresentativesgroups@eastwestrail.co.uk

If you have any questions about the project, please email:

contact@eastwestrail.co.uk

Or you can also call us on **0330 134 0067**