

east
west
RAIL

eastwestrail.co.uk



Buckinghamshire Local Representatives Group

Opening meeting

16 February 2022

Today's agenda

01.

Welcome

02.

Introduction to the Group

03.

Agreeing the Terms of Reference

04.

Break

05.

Project update

06.

Topics for future meetings

07.

Closing remarks

Housekeeping

Thank you for joining

This is a virtual meeting.

Please display your full name as when you registered to attend – this can be done through the 'Participants' section.

To help everyone feel part of the discussion, please feel free to turn your camera on during the meeting if you can.

Please use the 'Raise Hand' function to raise a question during the meeting, found in the bottom ribbon (under the 'Reactions' option).

During the break, please do not leave the Zoom meeting as you may not be able to re-join – please turn your camera off instead.



Display your full name in username



Please use the mute function



Use the 'Raise Hand' function if you want to raise a point during the meeting



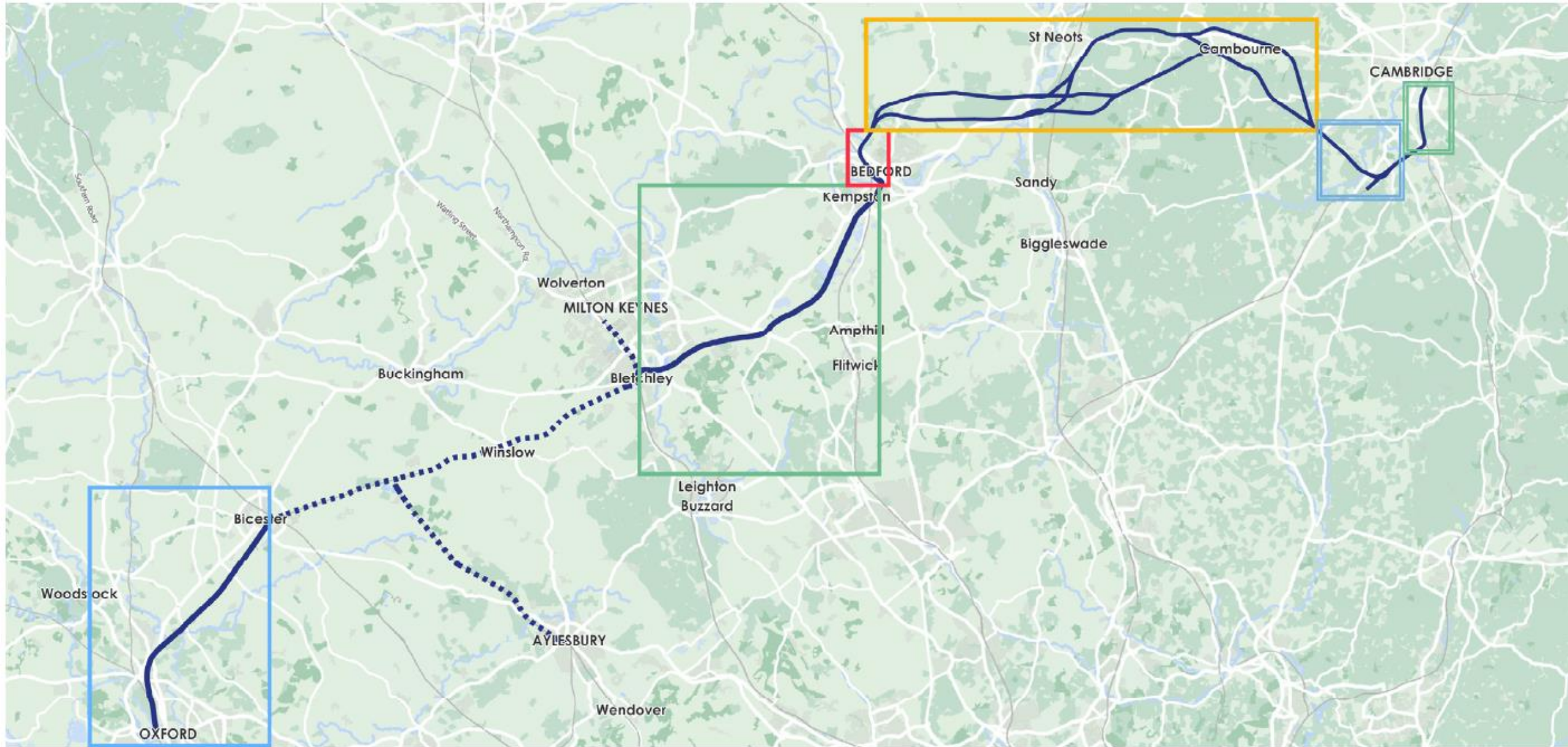
Please do put your camera on if possible

02.

Introduction to the Group

What are the Local Representatives Groups?

- Groups along the EWR route between Oxford and Cambridge, via Bedford.
- Opportunity for Parishes and Councillors and EWR Co to have:
 - Frank, open discussions with each other
 - About issues of interest to your local community
 - At regular intervals outside of formal consultation periods
- The Groups would be in place throughout the planning, building and running of EWR.

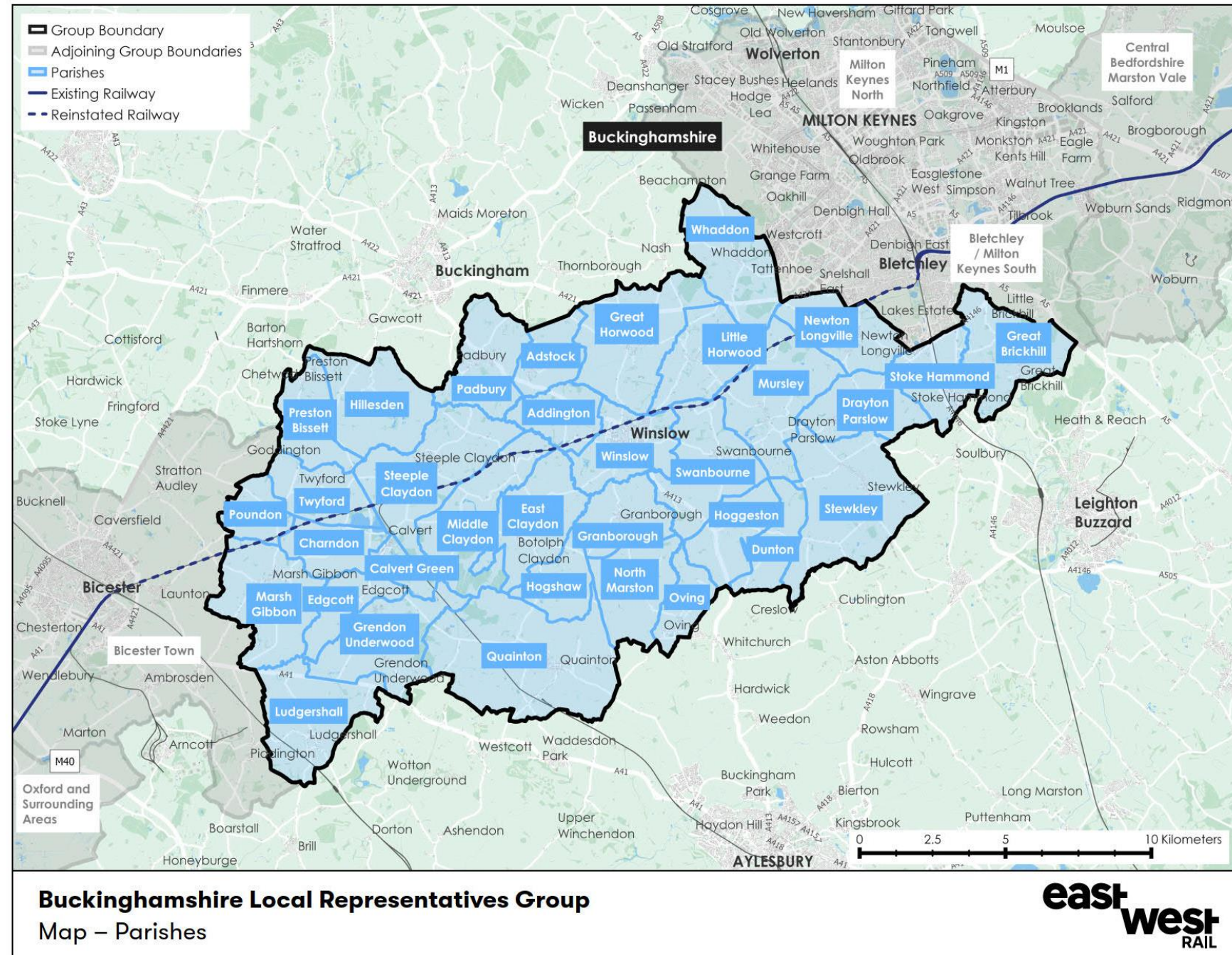


- | | |
|--|--|
|  Project section A:
Oxford to Bicester |  Project section D:
Clapham Green to The Eversdens |
|  Project section B:
Bletchley to Marston Vale Line |  Project section E:
Hariton to Hauxton |
|  Project section C:
Bedford |  Project section F:
The Shelfords to Cambridge |

Buckinghamshire Group

Parishes

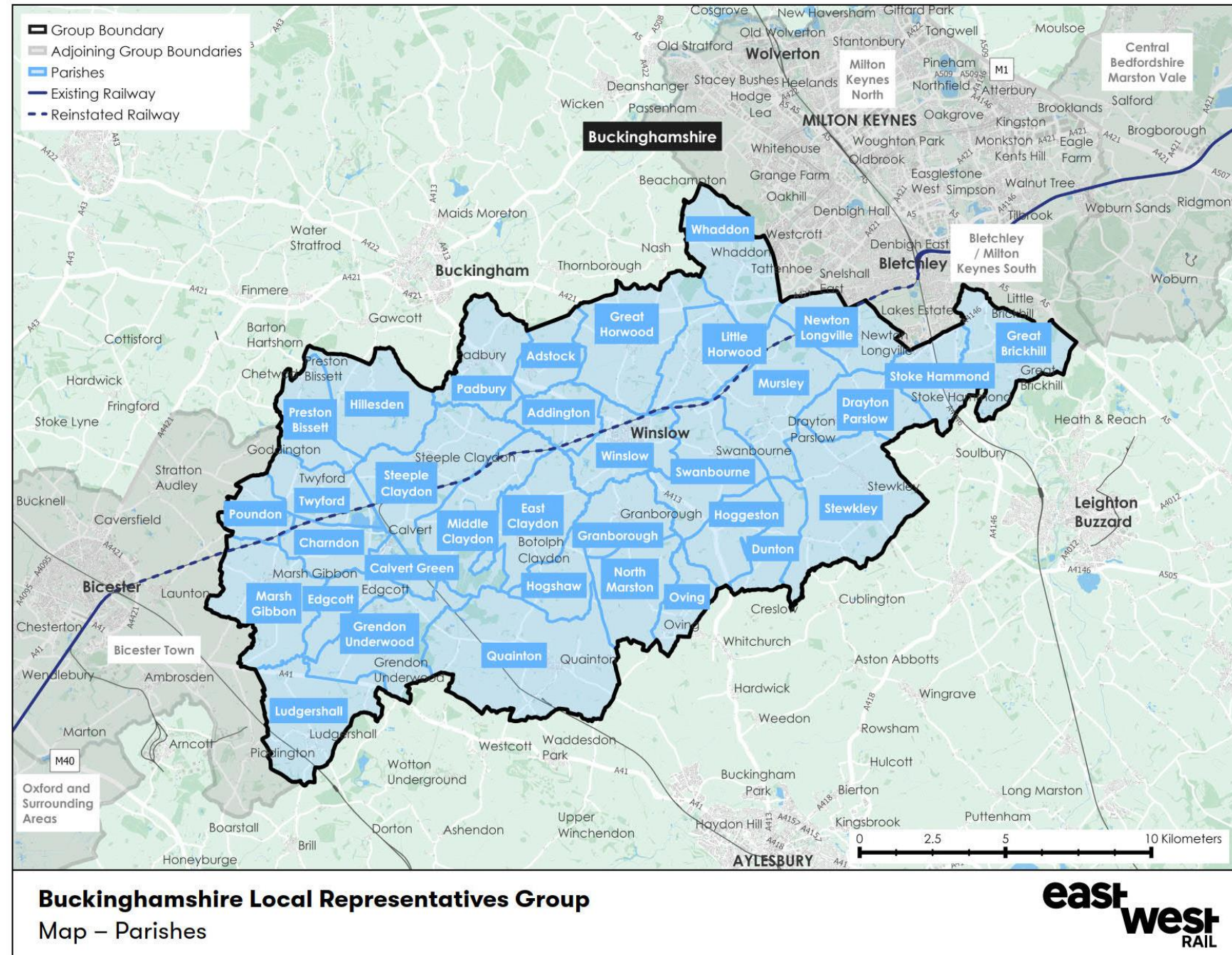
- Addington
- Adstock
- Calvert Green
- Charndon
- Drayton Parslow
- Dunton
- East Claydon
- Edgcott
- Granborough
- Great Brickhill
- Great Horwood
- Grendon Underwood
- Hillesden
- Hoggeston
- Hogshaw
- Little Horwood
- Ludgershall



Buckinghamshire Group

Parishes (continued)

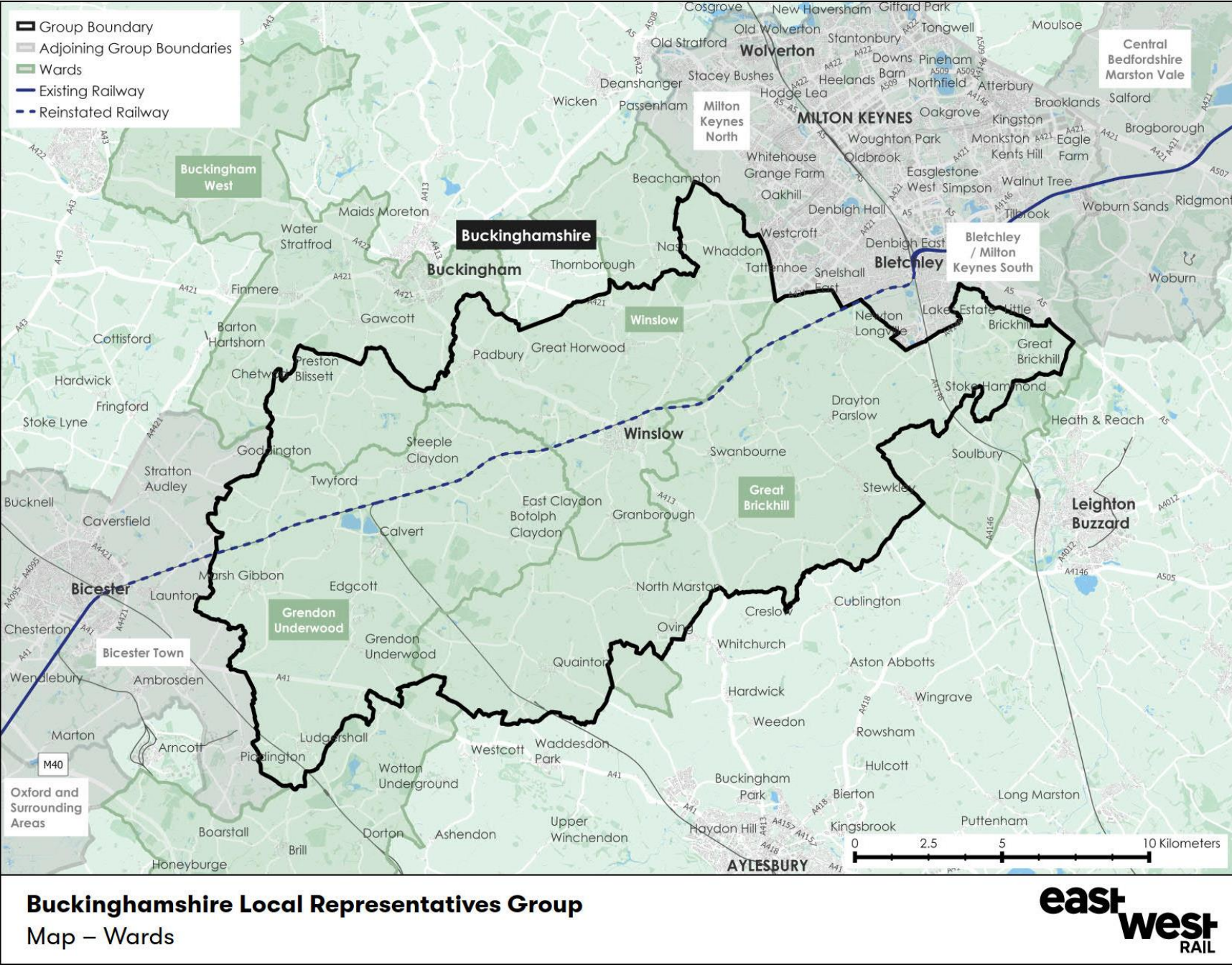
- Marsh Gibbon
- Middle Claydon
- Mursley
- Newton Longville
- North Marston
- Oving
- Padbury
- Poundon
- Preston Bissett
- Quainton
- Steeple Claydon
- Stewkley
- Stoke Hammond
- Swanbourne
- Twyford
- Whaddon
- Winslow



Buckinghamshire Group

Wards

- Buckingham West
- Great Brickhill
- Grendon Underwood
- Winslow



03.

Terms of Reference

What we need to discuss?

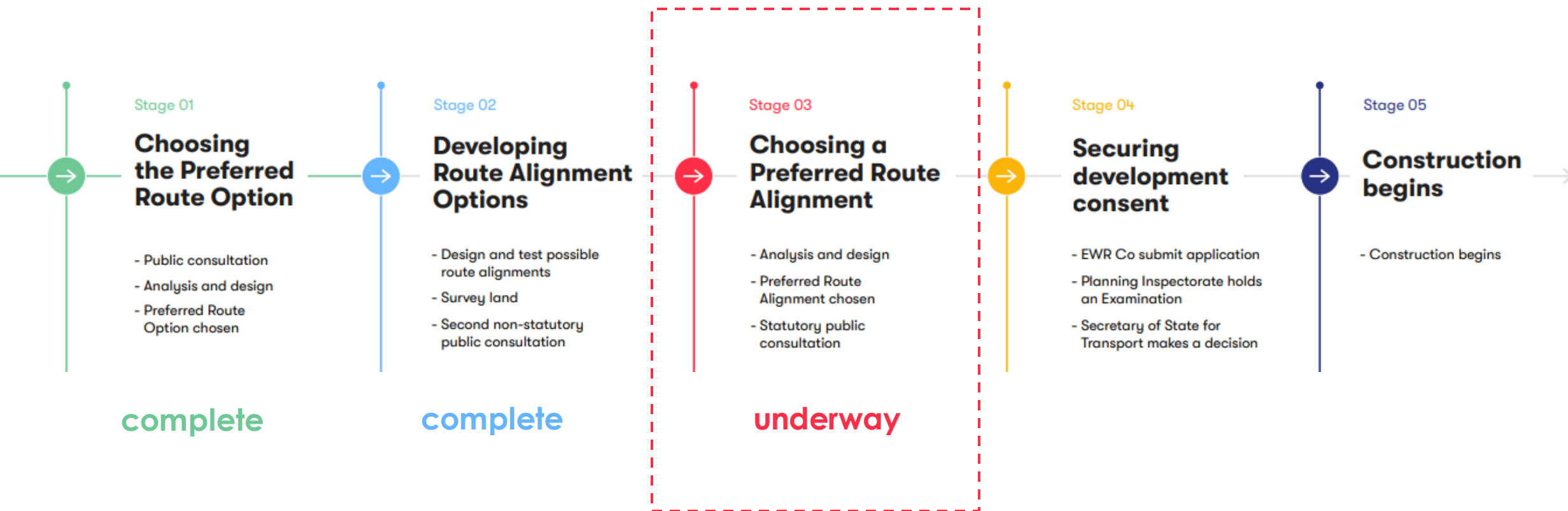
1. Type of meetings
2. Format of the meetings
3. Frequency of meetings
4. Schedule future meetings
5. Independent facilitator

04. Break

05. Project update



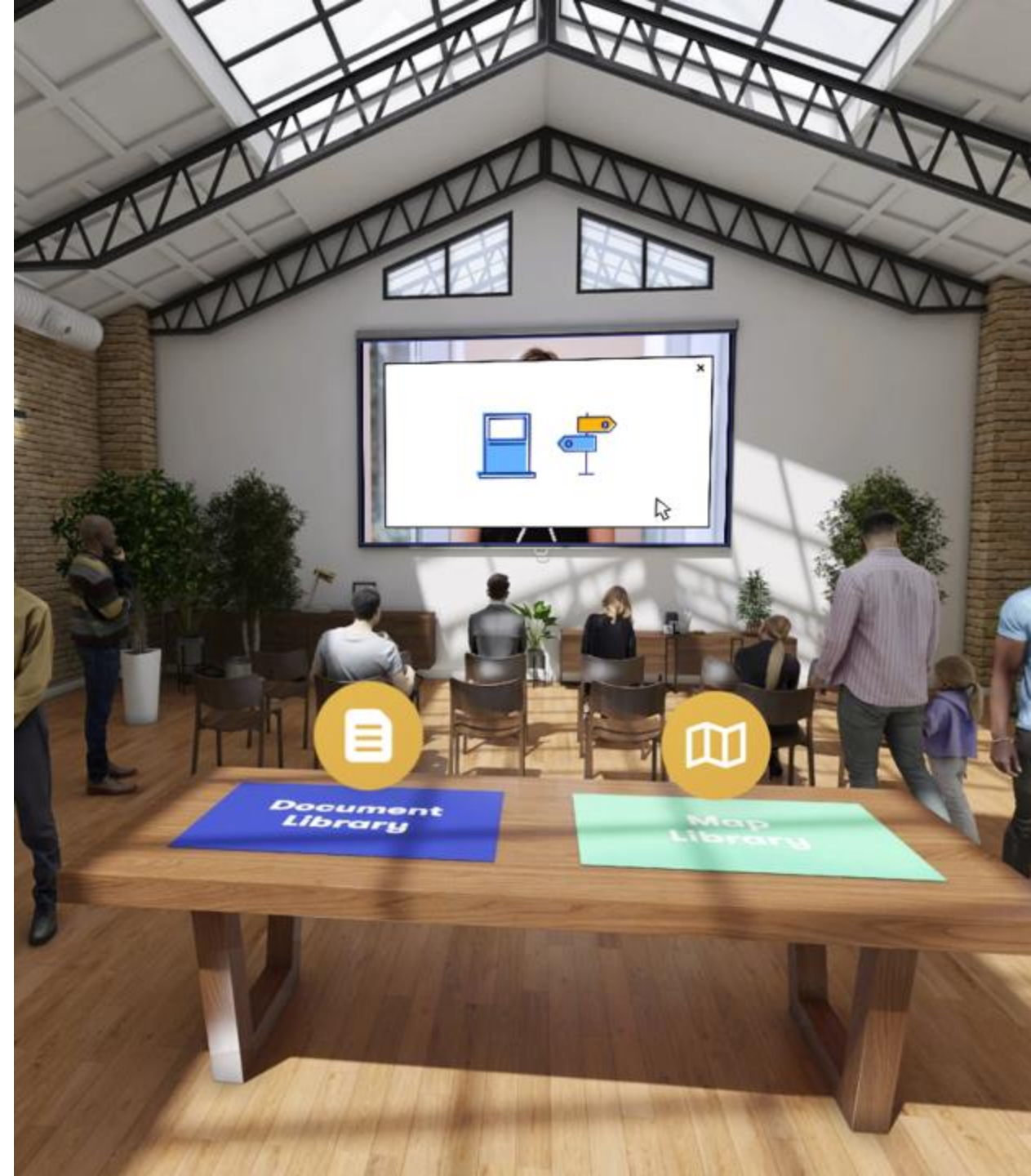
What's happening now?



2021 Consultation

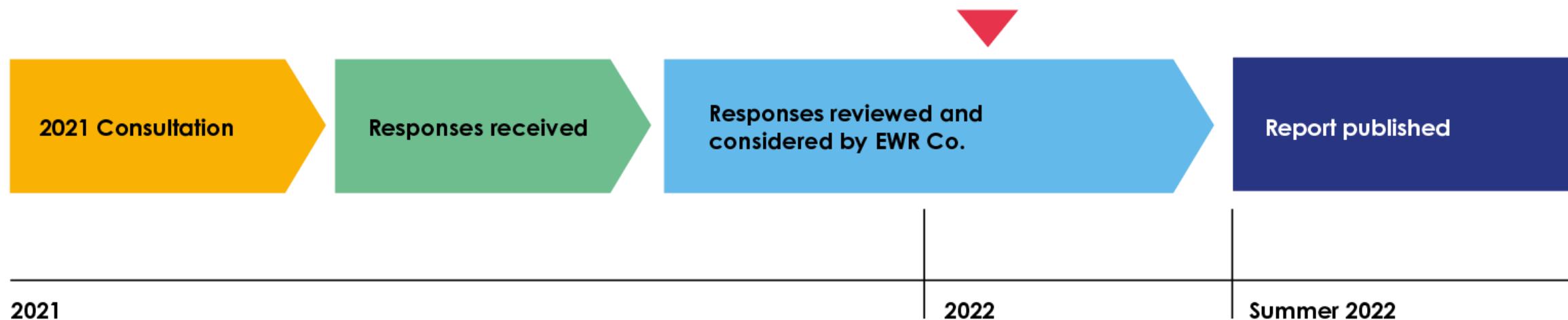
We want to thank everyone who gave their time and expertise in this once-in-a-generation opportunity to help shape the future of this new railway.

- Over 9,800 responses received
- Over 160,000 individual matters raised
- Responses being reviewed and considered by our expert team
- Giving real consideration to all feedback takes time
- We want to develop the best possible options based on this feedback



2021 Consultation – Where are we?

Timeline of the review process



Aylesbury

- Exploring options for connecting Aylesbury into EWR route with DfT and Network Rail.
- Additional investment needed represents value for the taxpayer.





Impact of construction

- Aim to minimise disruption wherever possible.
- Share construction proposals early and seek to mitigate impacts on local people throughout the project.

Delivering CS1



Facts and Figures

- 31 kilometres new railway
- Start of Main Works in January 2021
- Bicester Fringe commissioned August 2021: improved railhead access
- Earthworks substantially complete



OXD34AA Station Road, Launton



OXD10AA Salden Wood



OXD36AA Charbridge Lane



OXD36A Jarvis Lane Footbridge



OXD25A Sandhill Road



OXD16 Horwood Brook

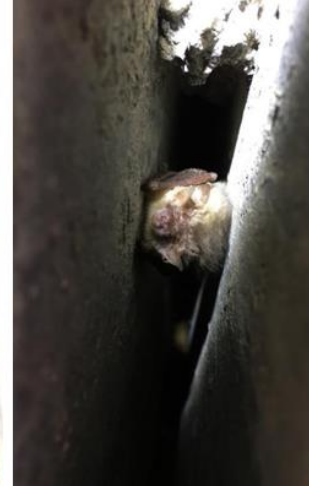
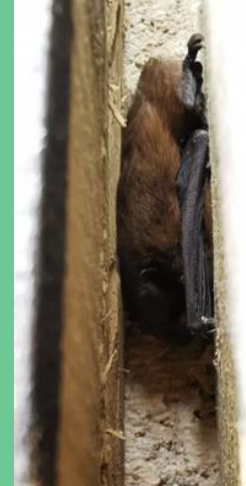


Structures

- 5x new overbridges
 - inc. 4x utilising new precast concrete shell abutment solution
- 2 x Deck replacements (Concrete Arch)
- 3 x Deck replacements (Precast)
- 5x footbridges
- 22x bridge refurbishments
- 1 x Box culvert

Environment & Ecology

- Improvement to surrounding areas to support larger populations
- 10% bio-diversity net gain commitment – currently the largest UK Infrastructure project to commit to this goal
- 20 Ecological Compensation sites established equal to the size of Winslow
- We will plant 32km of hedge, over 1300 trees and 245,000 plants
- 27 artificial badger sets have been constructed
 - 100% occupied / 27% used for breeding
- 2 species now roosting in the specially constructed bat house
- Botanical surveys ongoing: some species dominance will reduce appropriate management
- 100% ponds with confirmed Great Crested Newt Populations
 - 88% of GCN metapopulations the same or increased since pre-construction
- Claydon Brook Otter holt



Earthworks

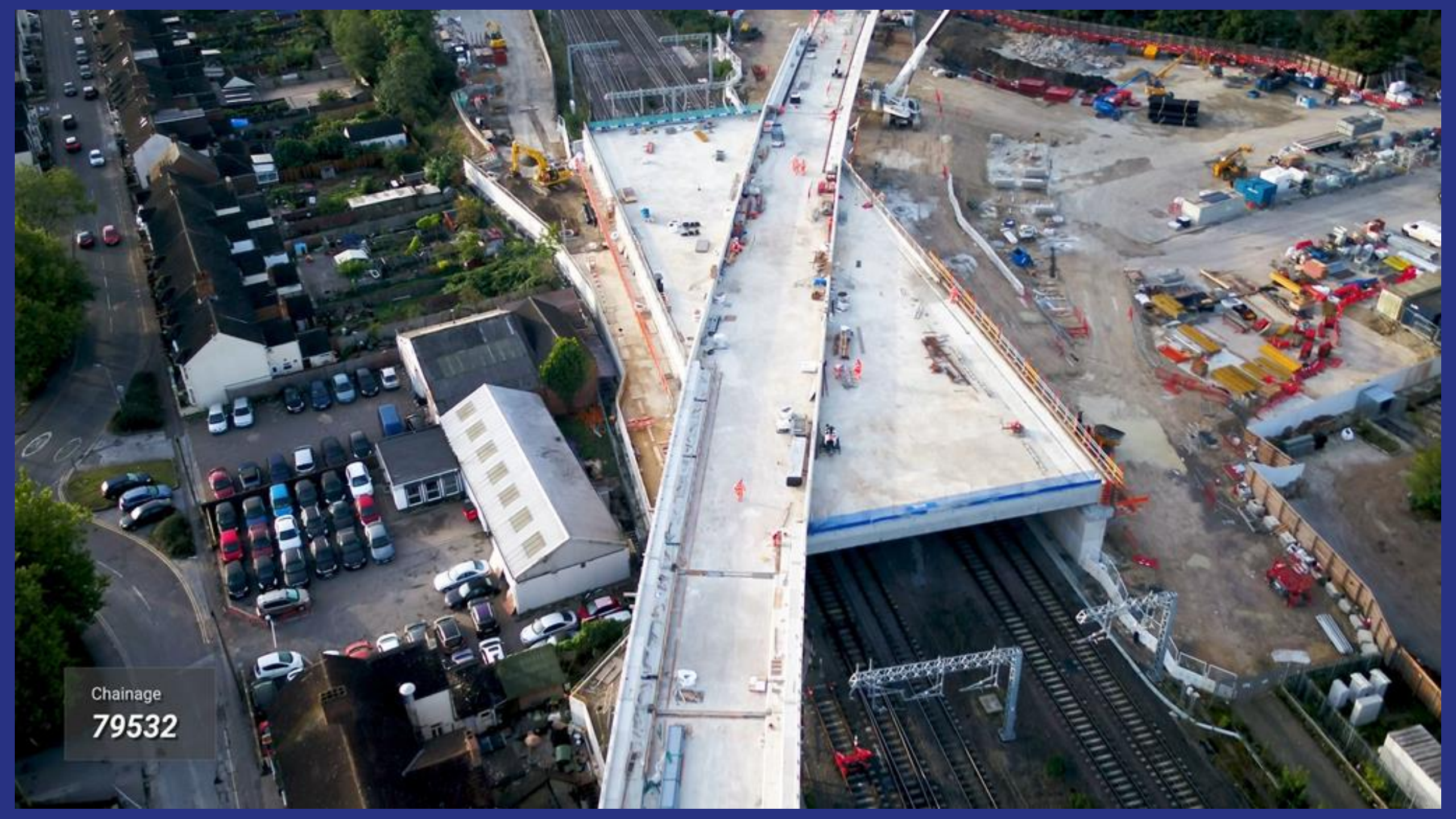
- Over 1million m3 of earthworks required across 25 different work sites
- J Murphy & Sons and Buckingham Contracting Group Ltd appointed as supply chain partners for main earthworks programme
- Majority of programme to be completed between March 2021 and December 2021
- First sectional completion achieved in late September 2021 ahead of programme



Bletchley Flyover

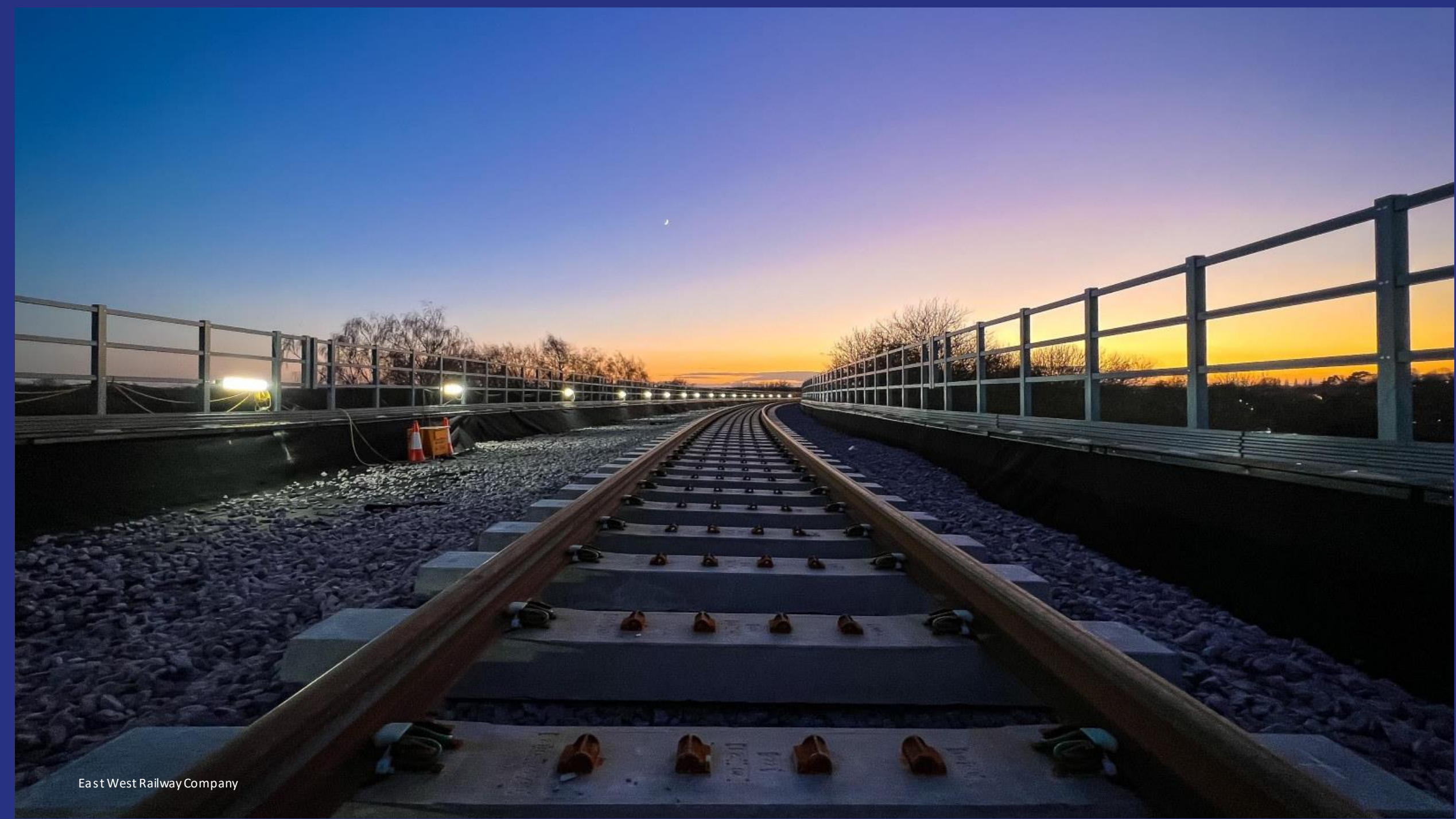
- Dismantling & rebuild of 14 existing spans from original structure – weighing up to 300 tonnes
- Innovative precast concrete shell abutments used to build 90-metre long structure adjacent to operational railway
- 103 beams installed over WCML over May bank holiday weekend





Chainage
79532





CS1 Lookahead

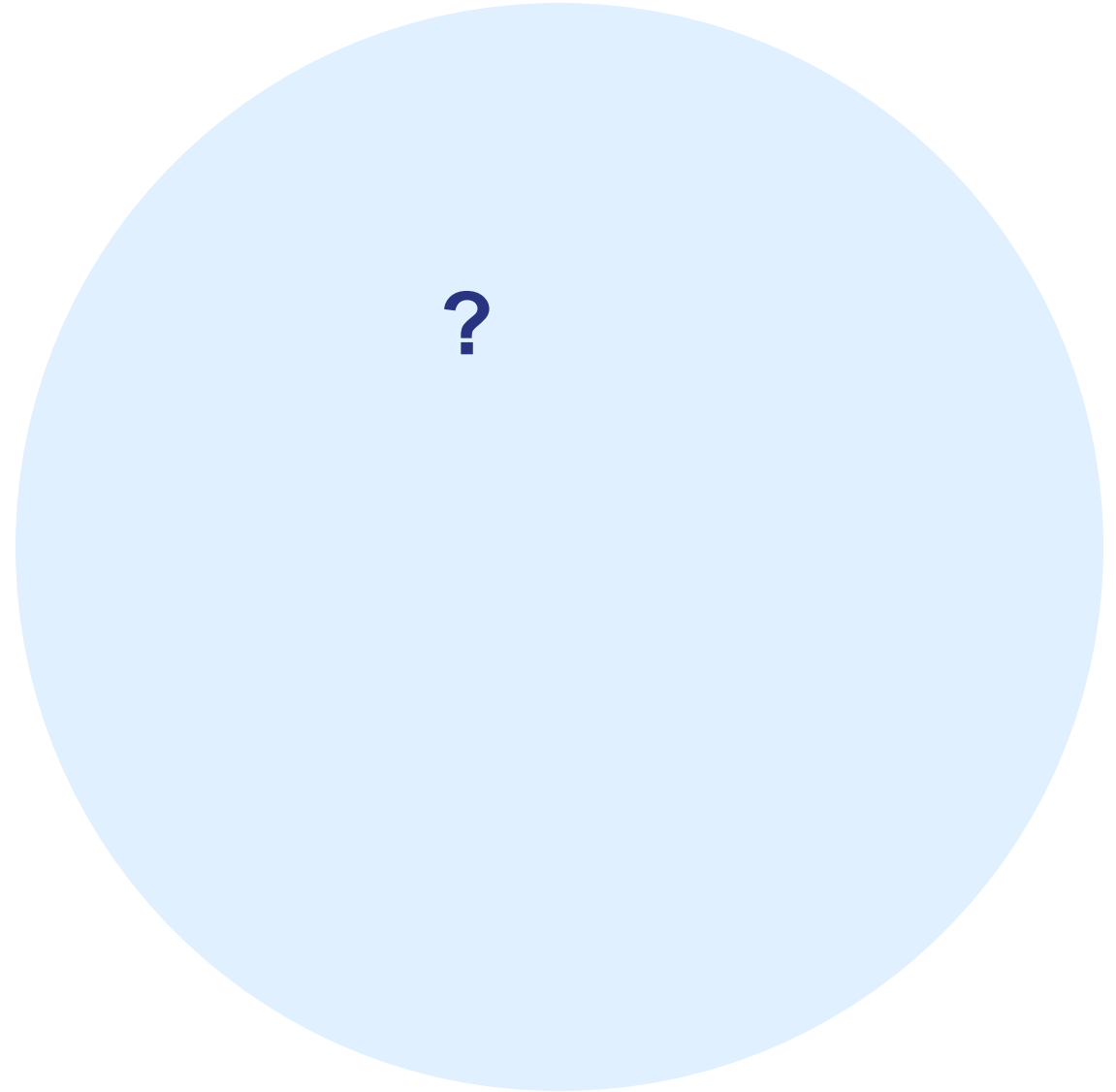
Section 2C - Civils & Structures Complete (area around Bletchley)	Summer 22
Section 2A - Civils & Structures Complete (area around Bicester)	Winter 22/23
Section 2B - Civils & Structures Complete (area around Winslow)	Spring 23
Signalling Works Complete (all sections)	Summer 23
Start of Driver Training	Winter 23/24
EWR Trains Delivered	Spring 24
Start of Dynamic Testing	Spring 24
Bletchley High Level and Winslow Station(s) Fitouts Complete	Summer 24
Trial Operations Complete	Winter 24
EWR Train Service Go Live	2025



What else is on your mind?

06.

Topics for future meetings - discussion



07. Closing remarks



always here

All the Group's relevant documents will be available on its **Community Hub** site.

We will notify you when available.

Got a question?

If you have any questions about the Group, please email:

localrepresentativesgroups@eastwestrail.co.uk

If you have any questions about the project, please email:

contact@eastwestrail.co.uk

Or you can also call us on **0330 134 0067**

east
west
RAIL

eastwestrail.co.uk