



NSC Parish Councils Feedback Session – Clapham to East/St Neots

Chair

Sarah Jacobs (Senior Engagement
Manager – Local Representatives Groups)

Monday 13th January, 6pm-8pm



1. Welcome

Agenda

1. Welcome

- Introductions
- Housekeeping

2. Update on the project

3. Introduction to the workshops

4. Update on Proposals

- Non-Statutory Consultation Proposals
- Environmental Impacts

5. Design Feedback Session

- Design and Connectivity

6. General Q&A

Introductions – Meeting the Team

- **Sarah Jacobs** – Senior Engagement Manager
- **Siobhan Adeleke** – DCO Statutory Stakeholder Engagement
- **Rob Milner** – Development Programme Manager
- **Fiona Man** – Senior Environmental Advisor
- **Ben Nicholass** – Traffic, Transport Planning and Modelling Senior Manager

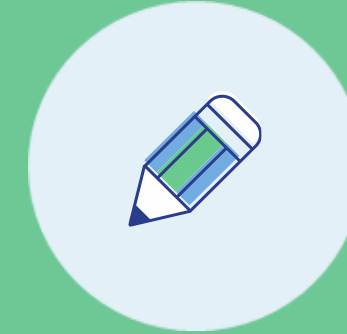


Housekeeping

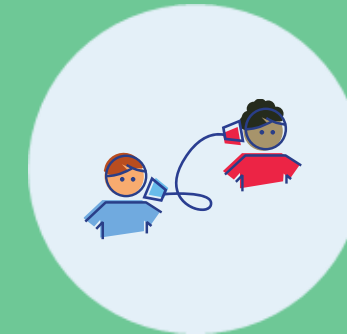
Thank you for attending

This is a virtual meeting.

- This meeting is being recorded and transcribed to be used to produce the meeting summary note.
- Please feel free to drop questions in the chat box/and or use the 'raise hand' function.
- Please drop your name and area you represent into the chat box.
- Inconsiderate behaviour and/or aggressive comments will not be tolerated and anyone acting in this manner will be asked to leave the call.



Display your full name in username



Please use the mute function



Use the 'Raise Hand' function if you want to raise a point during the meeting



Please do put your camera on if possible

Terms of reference

Scope of discussions

- We are seeking feedback on the design and optionality set out within the non-statutory consultation that is currently live. We welcome your feedback on:
 - Community benefits and impacts.
 - Land and property requirements.
 - Environmental and sustainability.
 - Construction and logistics.
 - Traffic and transport.
 - Door to Door Connectivity and Active Travel.
- Due to time constraints, we will not be discussing other route options shared historically, or any works outside the current scope.

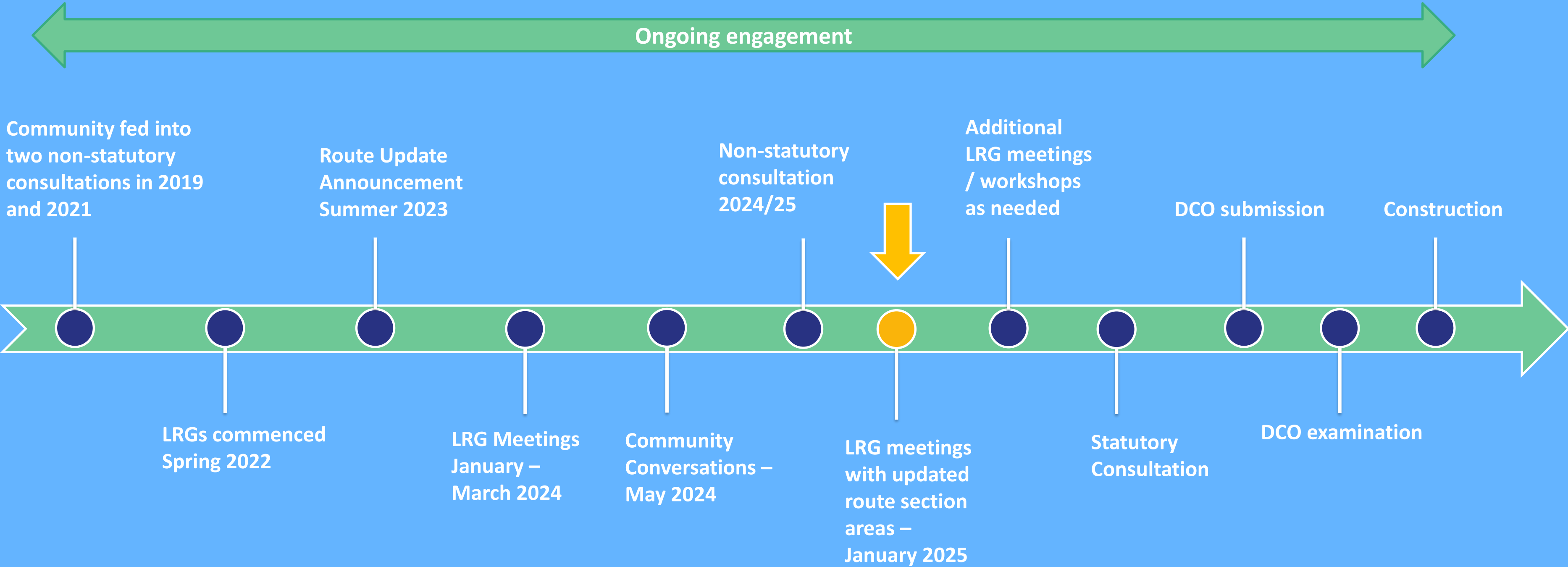
Collecting feedback

- We will be recording your feedback and issues raised and will consider these through our design change process.
- We will be sharing the feedback recorded with all attendees within 5 days of the session.
- The discussions within this workshop are supplementary to the formal feedback mechanism of the non-statutory consultation (via survey or written response).



2. Update on the project

Where we are in the process



Non-statutory consultation so far

- We are now over halfway through our non-statutory consultation
- 10 in-person events held so far with over 3000 attendees
- 2 online events held with almost 100 attendees
- Over 2000 responses received as of 2nd January
- View a large range of materials and information on our website including a Virtual Consultation room



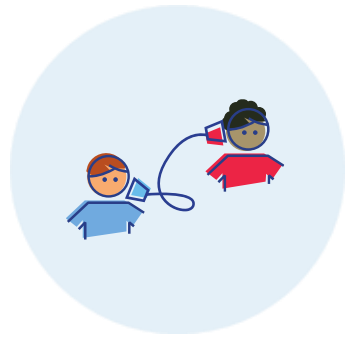
Remaining consultation events:

Venue	Event location	Event date
Bletchley Masonic Centre	Bletchley	15-Jan
Summerlin Centre	Woburn Sands	17-Jan
Clayton Hotel	Cambridge	18-Jan
St Andrews Church	Cherry Hinton	21-Jan

3. Introduction to the workshops

Design workshops

Purpose of this workshop



To discuss detail on the proposals within our non-statutory consultation and provide an opportunity for you to input into the design and feedback process, capturing issues or areas of concern, suggestions and area specific local feedback.



The workshops will be interactive, and we will be asking for feedback on various elements of the proposals throughout the session. Please do give your feedback and ask questions throughout.



The workshops are taking place within the consultation period to give us the opportunity to understand your feedback.

Consultation with Local Authorities

We are delivering interactive design workshops in-person with officers from local authorities during the non-statutory consultation period.

On 9 December we met with the following local authorities in Cambridgeshire: **Cambridgeshire County Council**, **Cambridge City Council**, **Huntingdonshire District Council** and **South Cambridgeshire District Council**, with representatives from their Planning, Highways and Active Travel teams in attendance. Representatives from **Cambridgeshire & Peterborough Combined Authority** and **Greater Cambridge Partnership** also joined.

Some of the key topics raised included:

- Interface with the local highway network.
- Integration with proposed local development.
- Active travel opportunities with a focus on first mile/last mile and connectivity between towns around stations.
- General project design including station layout.

A workshop is scheduled to take place with **Central Bedfordshire Council** on 22nd January 2025.

Further workshops are being planned throughout 2025.



4. Update on the Proposals

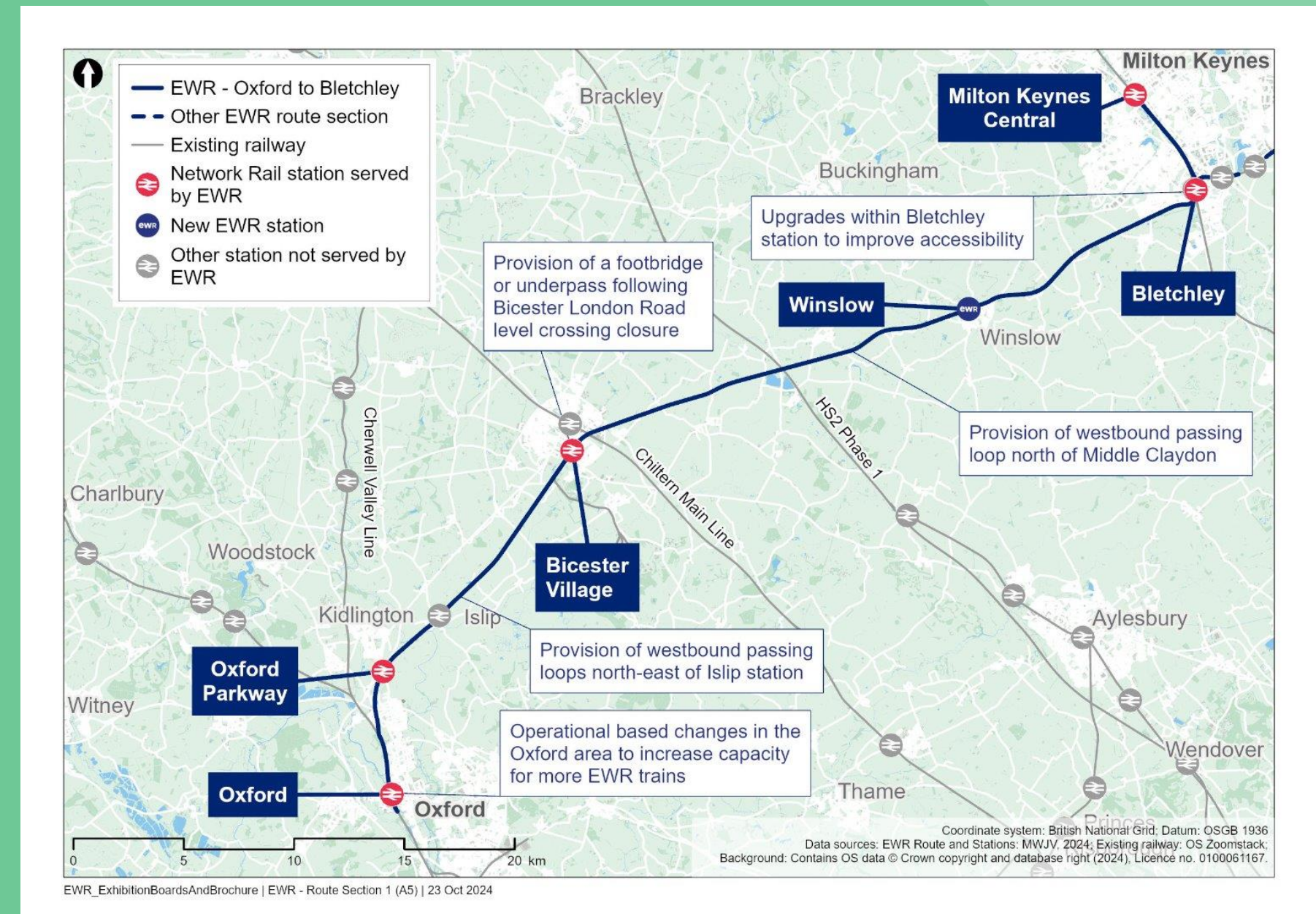
Route section 4: Clapham Green to Colesden

This section of the railway involves the construction of approximately 12km (7miles) of new, twin-track railway between Clapham Green (north of Bedford) and Colesden.

A summary of works being undertaken between Clapham Green and Colesden includes:

- The construction of several embankments, cuttings and bridges/viaducts to maintain an acceptable railway gradient in the area
- The installation of two passing loops near Colesden
- The construction of new bridges to maintain roads and Public Rights of Way

Since the 2021 non-statutory consultation we have moved the proposed alignment of the railway slightly to the north, to increase the distance to properties in Wilden.

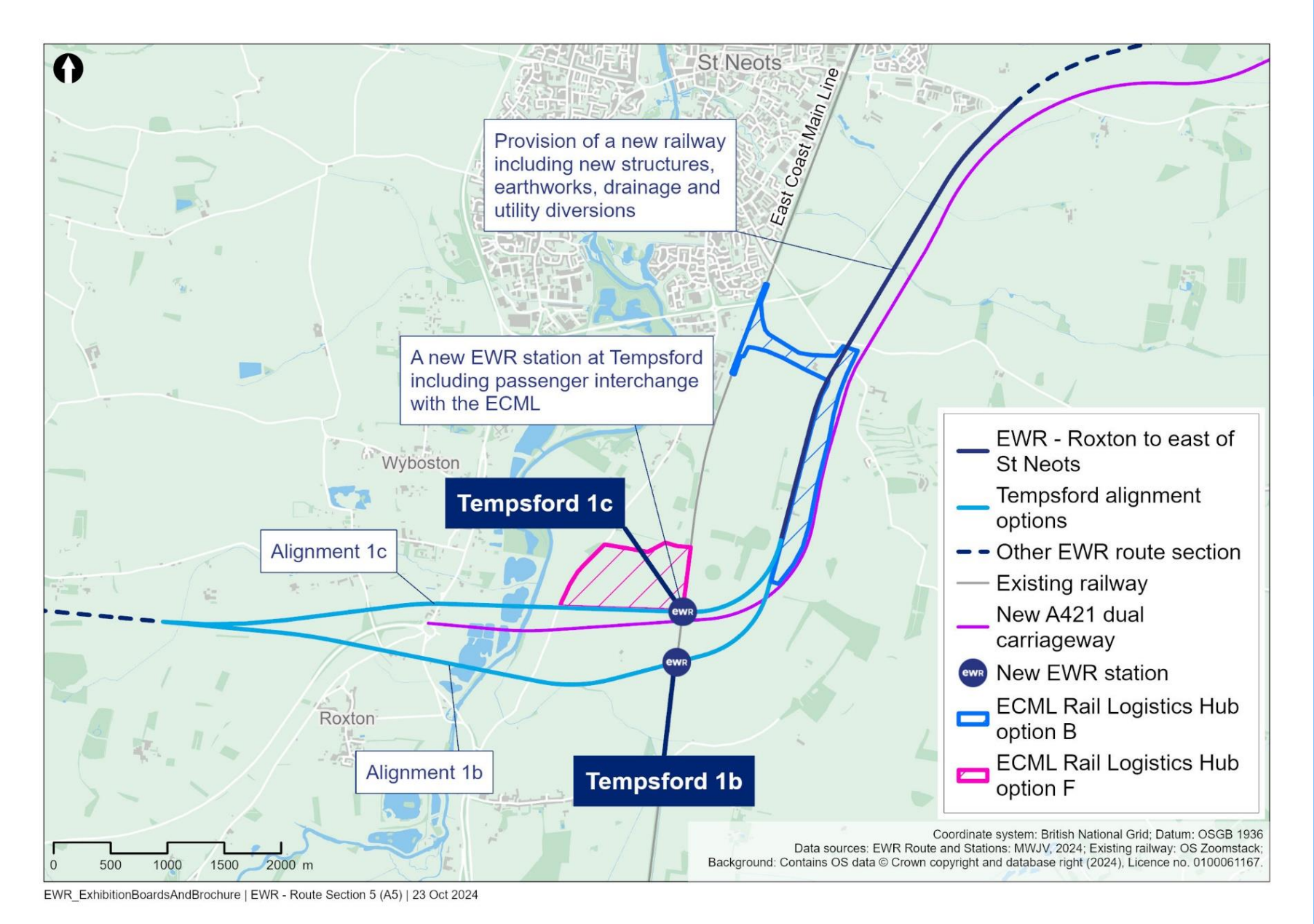


Route section 1: Oxford to Bletchley

Route section 5: Roxton to east of St Neots

This section of East West Rail runs between Roxton and east of St Neots, which is approximately 10km (6 miles) long, beginning at South Brook, north of Roxton and Tempsford, and running to the east of Little Barford and St Neots.

Since the route update announcement, we have undertaken further design work which has identified two localised alternatives in the Tempsford area.



Route section 5: Roxton to east of St Neots

Approach to the environment

Protecting the environment is a fundamental part of our decision making when developing our proposals, and in doing so we will continue to take a proactive approach to avoid, reduce or compensate for potential negative environmental impacts to deliver a sustainable railway.

We remain committed to the environmental principles outlined as part of the 2021 non-statutory consultation. Since then, we have prepared an Environmental Sustainability Strategy which contains six environmental sustainability pillars. Each pillar has an associated ambition and definition.



Approach to the environment- continued

Consideration of the potential likely environmental impacts of the proposals and mitigations are described in the **Environmental Update Report** (which will be presented as part of this consultation).

For the statutory consultation, a **Preliminary Environmental Information Report** will be shared, and an **Environmental Statement** will then be submitted as part of the Development Consent Order.

Throughout this process, design development and Environmental Impact Assessment will continue, making use of information gathered through surveys.





5. Design Feedback Session

Design Feedback Session: Design and Connectivity

Clapham to Colesden design

- Including passing loops and highways & PRow diversions

Alignment 1b and 1c designs

- Viaducts and road crossings
- Tempsford Station Design

ECML Logistics hubs

Common route East of St Neots

- Highway & PRow diversions

General Q&A / AOB

Thank you

east
west
RAIL

