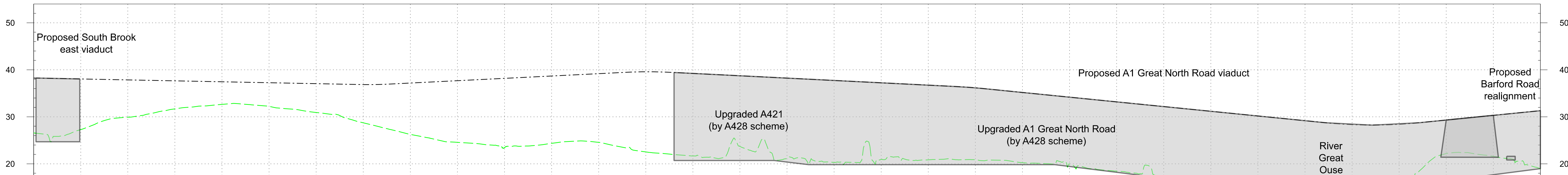


PLAN
SCALE 1:5000 @ A1

- Profile Legend:
- EWR vertical alignment
 - - - Existing vertical alignment
 - Existing ground



DOWN MAIN	CHAINAGE	500+000	500+100	500+200	500+300	500+400	500+500	500+600	500+700	500+800	500+900	501+000	501+100	501+200	501+300	501+400	501+500	501+600	501+700	501+800	501+900	502+000	502+100	502+200	502+300	502+400	502+500	502+600	502+700	502+800	502+900	503+000	503+100	503+200
	EXISTING LEVEL	26.6	27.3	29.9	31.7	32.6	32.2	30.9	28.7	26.3	24.6	23.4	24.4	24.6	22.5	21.7	23.7	21.1	20.3	20.9	20.8	20.9	20.2	20.0	18.5	17.3	16.5	15.4	17.1	16.2	15.8	22.2	21.6	19.0
	PROPOSED LEVEL	38.2	38.0	37.8	37.6	37.4	37.2	37.0	36.9	37.2	37.7	38.2	38.7	39.2	39.6	39.2	38.7	38.2	37.7	37.2	36.7	36.2	35.2	34.2	33.2	32.2	31.2	30.2	29.2	28.3	28.4	29.3	30.3	31.3
	DIFFERENCE	11.7	10.8	7.9	6.0	4.8	5.0	6.1	8.1	10.9	13.1	14.8	14.3	14.6	17.1	17.6	15.0	17.1	17.4	16.3	15.9	15.3	14.9	14.2	14.7	14.9	14.6	14.8	12.1	12.1	12.6	7.1	8.7	12.3

PROFILE
SCALE H:1:5000 V:1:500 @ A1

OS map data reproduced by permission of Ordnance Survey on behalf of HMSO. © Crown copyright 2021. All rights reserved. Ordnance Survey licence number AC0000830608
This document is issued for the party which commissioned it and for specific purposes connected with the captioned project only. It should not be relied upon by any other party or used for any other purpose.
We accept no responsibility for the consequences of this document being relied upon by any other party, or being used for any other purpose, or containing any error or omission which is due to an error or omission in data supplied to us by other parties.

These drawings are indicative and for consultation purposes only
For guidance and general notes refer to drawing 133735-MWJ-Z0-XXX-DRG-CSE-000002

Legend/Notes

- Draft Order Limits
- EWR alignment
- Chainage (metres)
- Permanent highway (public and private)
- EWR existing alignment (by others)
- Construction zone (by others)
- Engineering earthworks (embankment)
- Engineering earthworks (cutting)
- Landscape mitigation earthworks (embankment)
- Landscape mitigation earthworks (cutting)
- Construction & logistic sites
- Telecoms compound
- Traction power compound
- Bridges and retaining walls
- Noise mitigation (indicative)
- Station or other building
- Utilities construction zone
- Habitat creation - woodland
- Habitat creation - hedgerow
- Habitat creation - scrub
- Habitat creation - grassland
- Habitat creation - wetland
- Public realm / station car parking
- Public Right of Way - existing
- Public Right of Way - closed
- Public Right of Way - proposed
- Balancing pond (indicative)
- Drainage attenuation tank (below ground)
- Preliminary utilities diversion

Project
East West Rail
Oxford to Cambridge

Drawing Title
DCO Non-Statutory Consultation
Roxton to east of St Neots
Route Section 5
Sheet 1 Option 1B

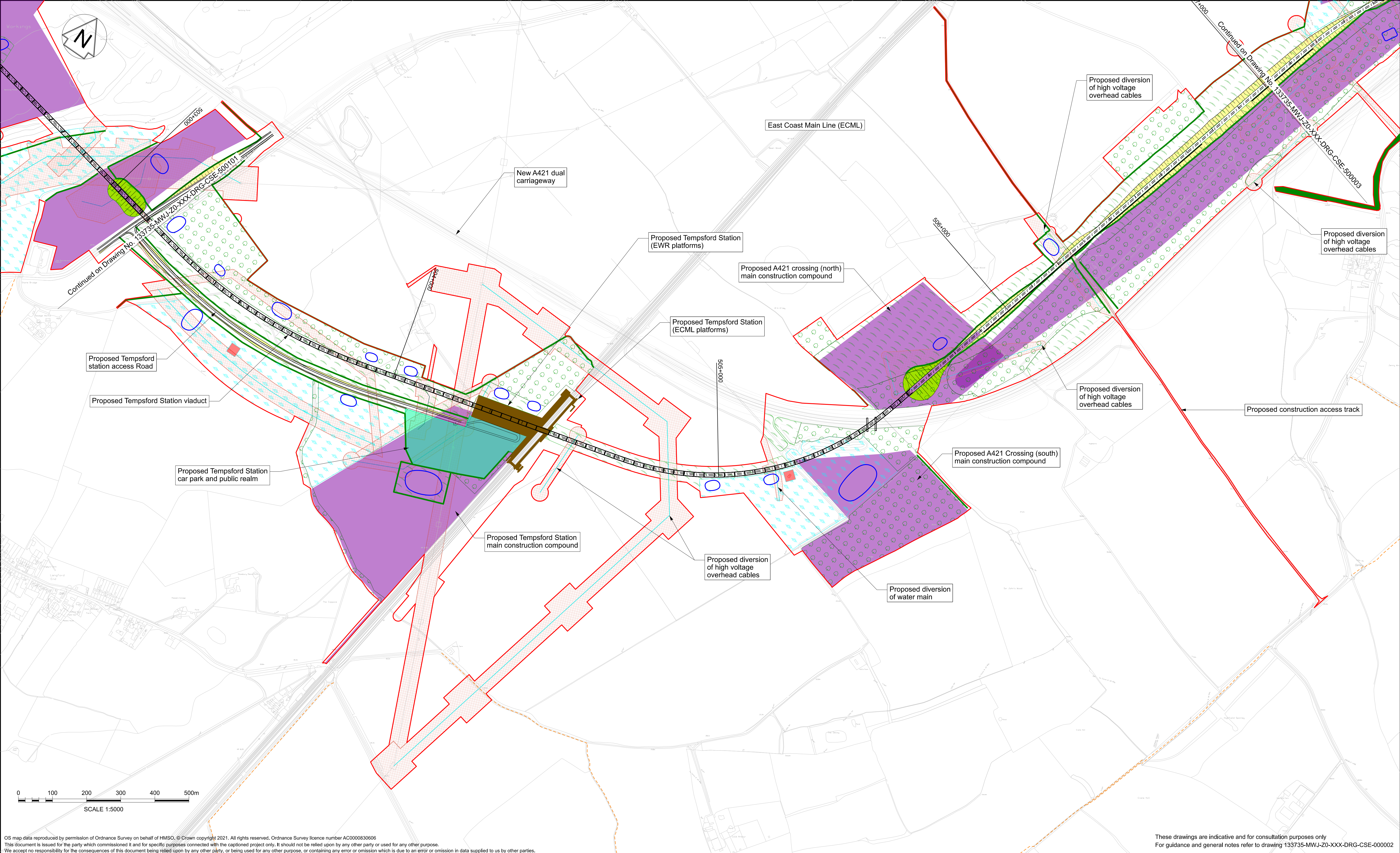
east west RAIL

One Grafton Mews, Midsummer Boulevard, Milton Keynes, Buckinghamshire, MK9 1FB

Designed MWJV	Signed JS	Date 04/11/24	Checked M.KYNOCH	Signed MK	Date 04/11/24
Drawn J.SYMONDS	Signed JS	Date 04/11/24	Approved M.PENFOLD	Signed MP	Date 04/11/24
Scale(s) 1:5000	Status Information			Suitability Code S2	Sheet 47 of 76
Drawing Number 133735-MWJ-Z0-XXX-DRG-CSE-500101				Revision P02	

Legend/Notes

- Draft Order Limits
- EWR alignment
- Chainage (metres)
- Permanent highway (public and private)
- EWR existing alignment (by others)
- Construction zone (by others)
- Engineering earthworks (embankment)
- Engineering earthworks (cutting)
- Landscape mitigation earthworks (embankment)
- Landscape mitigation earthworks (cutting)
- Construction & logistic sites
- Telecoms compound
- Traction power compound
- Bridges and retaining walls
- Noise mitigation (indicative)
- Station or other building
- Utilities construction zone
- Habitat creation - woodland
- Habitat creation - hedgerow
- Habitat creation - scrub
- Habitat creation - grassland
- Habitat creation - wetland
- Public realm / station car parking
- Public Right of Way - existing
- Public Right of Way - closed
- Public Right of Way - proposed
- Balancing pond (indicative)
- Drainage attenuation tank (below ground)
- Preliminary utilities diversion



OS map data reproduced by permission of Ordnance Survey on behalf of HMSO. © Crown copyright 2021. All rights reserved. Ordnance Survey licence number AC0000830608
This document is issued for the party which commissioned it and for specific purposes connected with the captioned project only. It should not be relied upon by any other party or used for any other purpose.
We accept no responsibility for the consequences of this document being relied upon by any other party, or being used for any other purpose, or containing any error or omission which is due to an error or omission in data supplied to us by other parties.

These drawings are indicative and for consultation purposes only
For guidance and general notes refer to drawing 133735-MWJ-Z0-XXX-DRG-CSE-000002

Legend/Notes				
<div><div></div> Draft Order Limits</div> <div><div></div> EWR alignment</div> <div><div>100+000</div> Chainage (metres)</div> <div><div></div> Permanent highway (public and private)</div> <div><div></div> EWR existing alignment (by others)</div> <div><div></div> Construction zone (by others)</div>				
<div><div></div> Engineering earthworks (embankment)</div> <div><div></div> Engineering earthworks (cutting)</div> <div><div></div> Landscape mitigation earthworks (embankment)</div> <div><div></div> Landscape mitigation earthworks (cutting)</div>				
<div><div></div> Construction & logistic sites</div> <div><div></div> Telecoms compound</div> <div><div></div> Traction power compound</div> <div><div></div> Bridges and retaining walls</div> <div><div></div> Noise mitigation (indicative)</div> <div><div></div> Station or other building</div> <div><div></div> Utilities construction zone</div>				
<div><div></div> Habitat creation - woodland</div> <div><div></div> Habitat creation - hedgerow</div> <div><div></div> Habitat creation - scrub</div> <div><div></div> Habitat creation - grassland</div> <div><div></div> Habitat creation - wetland</div> <div><div></div> Public realm / station car parking</div>				
<div><div></div> Public Right of Way - existing</div> <div><div></div> Public Right of Way - closed</div> <div><div></div> Public Right of Way - proposed</div> <div><div></div> Balancing pond (indicative)</div> <div><div></div> Drainage attenuation tank (below ground)</div> <div><div></div> Preliminary utilities diversion</div>				
P01	10/06/24	Prepared for Information	JS	MP
P02	04/11/24	Prepared for Non-Statutory Consultation	JS	MB
Rev	Date	Description of Revisions	Drawn	Chkd

<div><div></div> Engineering earthworks (embankment)</div> <div><div></div> Engineering earthworks (cutting)</div> <div><div></div> Landscape mitigation earthworks (embankment)</div> <div><div></div> Landscape mitigation earthworks (cutting)</div>				
<div><div></div> Construction & logistic sites</div> <div><div></div> Telecoms compound</div> <div><div></div> Traction power compound</div> <div><div></div> Bridges and retaining walls</div> <div><div></div> Noise mitigation (indicative)</div> <div><div></div> Station or other building</div> <div><div></div> Utilities construction zone</div>				
<div><div></div> Habitat creation - woodland</div> <div><div></div> Habitat creation - hedgerow</div> <div><div></div> Habitat creation - scrub</div> <div><div></div> Habitat creation - grassland</div> <div><div></div> Habitat creation - wetland</div> <div><div></div> Public realm / station car parking</div>				
<div><div></div> Public Right of Way - existing</div> <div><div></div> Public Right of Way - closed</div> <div><div></div> Public Right of Way - proposed</div> <div><div></div> Balancing pond (indicative)</div> <div><div></div> Drainage attenuation tank (below ground)</div> <div><div></div> Preliminary utilities diversion</div>				

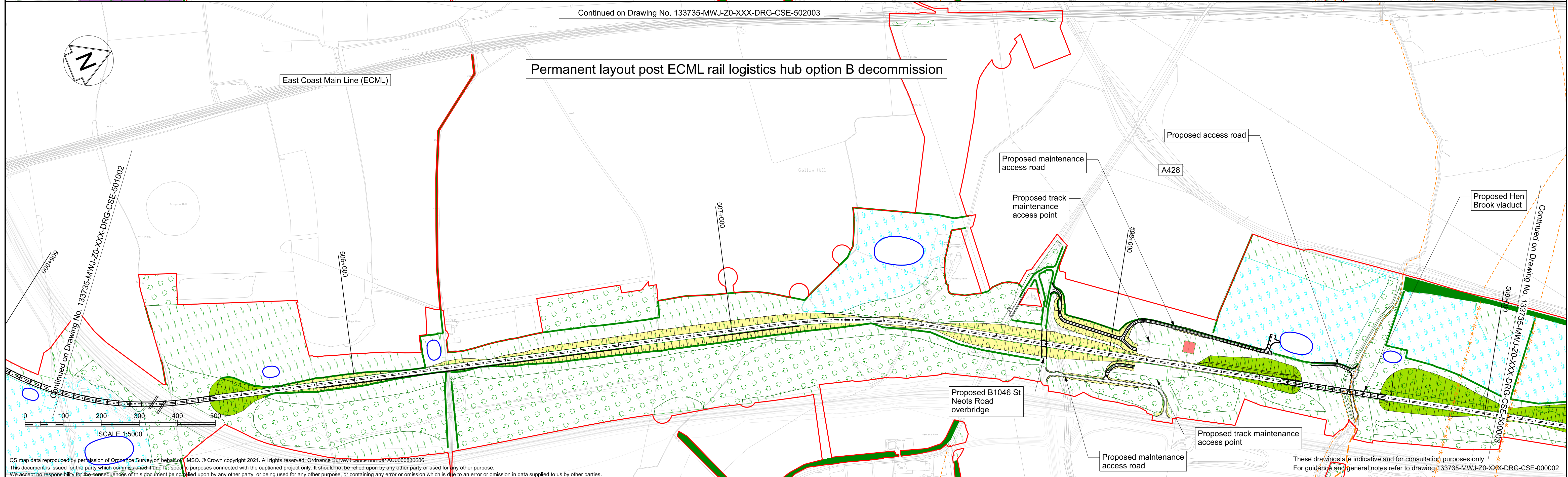
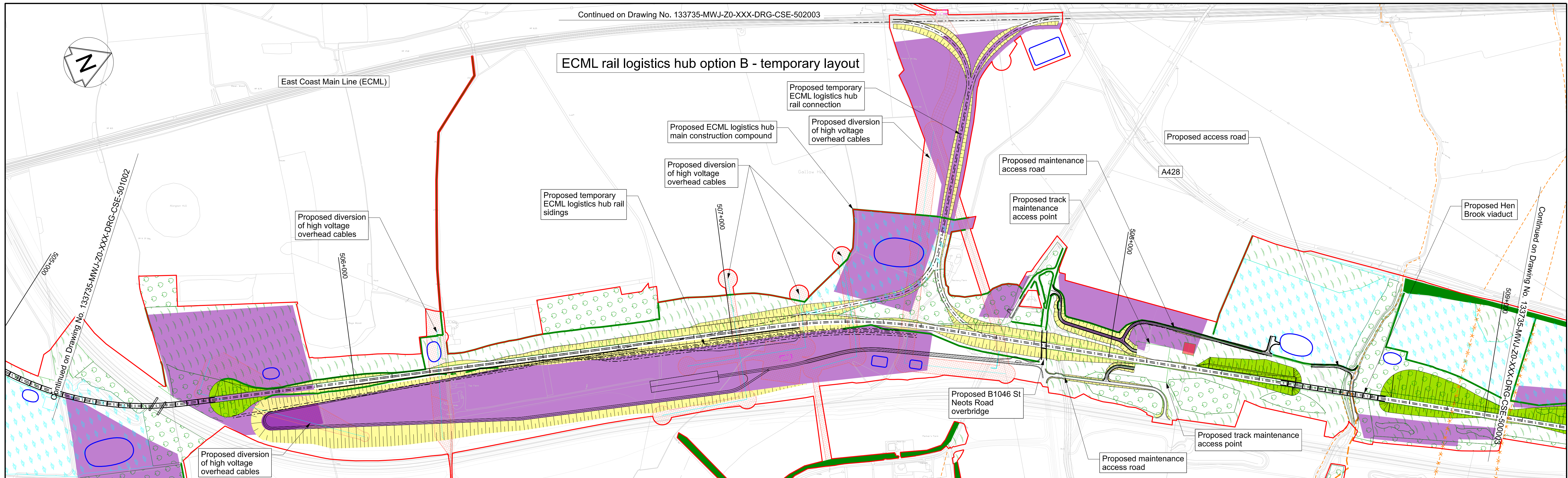
Project

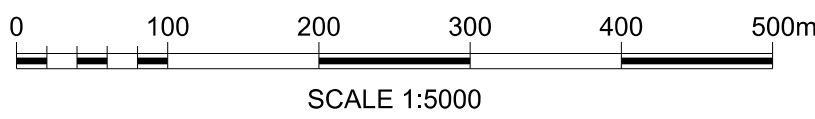
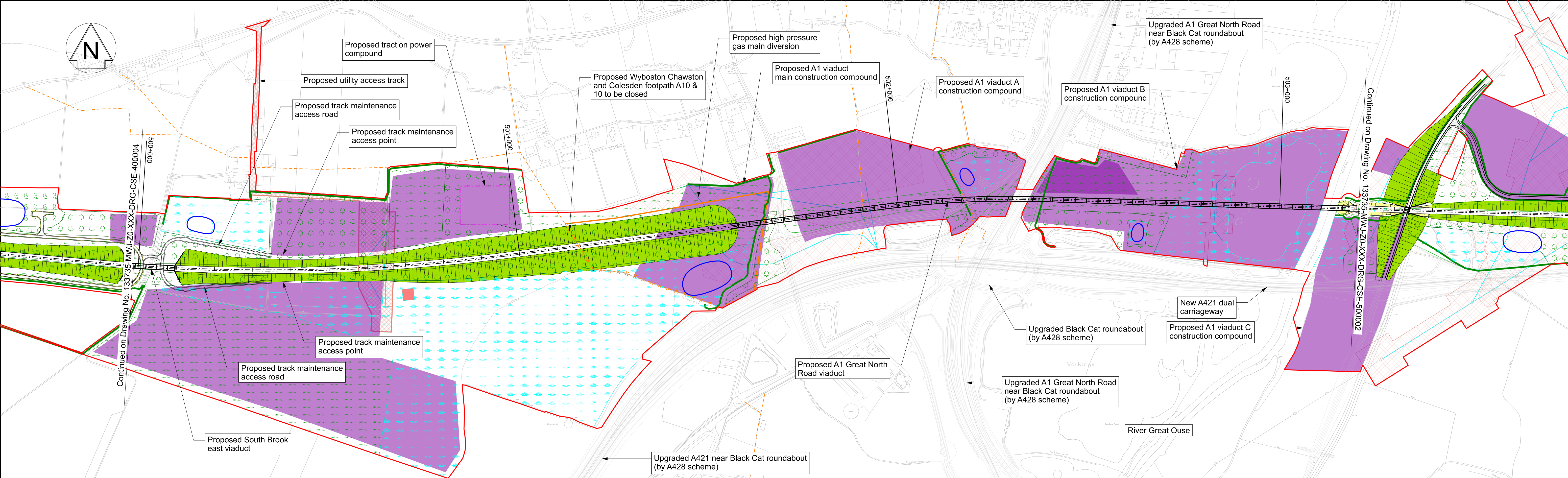
East West Rail
Oxford to Cambridge

Drawing Title

DCO Non-Statutory Consultation
Roxton to east of St Neots
Route Section 5
Sheet 2a Option 1B

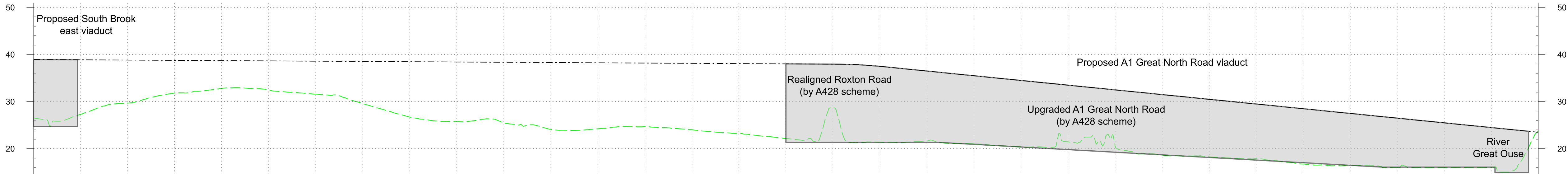
east west RAIL		MWJV	
One Grafton Mews, Midsummer Boulevard, Milton Keynes, Buckinghamshire, MK9 1FB		Mott MacDonald House, 8-10 Sydenham Road, Croydon, CR20 2EE, WSP House, Chancery Lane, London, WC2A 1AF.	
Designed MWJV	Signed JS	Date 04/11/24	Checked M.KYNOCH
Drawn J.SYMONDS	Signed JS	Date 04/11/24	Approved M.PENFOLD
Scale(s) 1:5000	Status Information	Suitability Code S2	Revision P02
Drawing Number 133735-MWJ-Z0-XXX-DRG-CSE-501102			Sheet 51 of 76

[illegible]



PLAN
SCALE 1:5000 @ A1

- Profile Legend:
- EWR vertical alignment
 - Existing vertical alignment
 - Existing ground



DOWN MAIN	CHAINAGE	500+000	500+100	500+200	500+300	500+400	500+500	500+600	500+700	500+800	500+900	501+000	501+100	501+200	501+300	501+400	501+500	501+600	501+700	501+800	501+900	502+000	502+100	502+200	502+300	502+400	502+500	502+600	502+700	502+800	502+900	503+000	503+100	503+200
	EXISTING LEVEL	26.5	27.3	29.7	31.8	32.8	32.4	31.6	29.6	26.7	25.7	25.5	24.1	24.2	24.7	24.0	23.2	22.2	28.7	21.4	21.6	21.0	20.4	21.5	20.6	18.6	18.3	17.9	16.7	16.5	16.0	16.0	16.1	23.8
	PROPOSED LEVEL	38.9	38.9	38.8	38.8	38.7	38.6	38.6	38.5	38.5	38.4	38.4	38.3	38.2	38.2	38.1	38.1	38.0	38.0	37.5	36.5	35.5	34.5	33.5	32.5	31.5	30.5	29.5	28.5	27.5	26.5	25.5	24.5	23.5
	DIFFERENCE	12.4	11.6	9.1	6.9	5.9	6.2	7.0	8.9	11.8	12.7	12.9	14.2	14.0	13.5	14.1	14.9	15.8	9.3	16.1	14.9	14.4	14.1	12.0	11.9	12.8	12.2	11.6	11.8	11.0	10.4	9.5	8.4	-0.3

PROFILE
SCALE H:1:5000 V:1:500 @ A1

OS map data reproduced by permission of Ordnance Survey on behalf of HMSO. © Crown copyright 2021. All rights reserved. Ordnance Survey licence number AC0000830606
This document is issued for the party which commissioned it and for specific purposes connected with the captioned project only. It should not be relied upon by any other party or used for any other purpose.
We accept no responsibility for the consequences of this document being relied upon by any other party, or being used for any other purpose, or containing any error or omission which is due to an error or omission in data supplied to us by other parties.

These drawings are indicative and for consultation purposes only
For guidance and general notes refer to drawing 133735-MWJ-Z0-XXX-DRG-CSE-000002

Legend/Notes

- Draft Order Limits
- EWR alignment
- Chainage (metres)
- Permanent highway (public and private)
- EWR existing alignment (by others)
- Construction zone (by others)
- Engineering earthworks (embankment)
- Engineering earthworks (cutting)
- Landscape mitigation earthworks (embankment)
- Landscape mitigation earthworks (cutting)
- Construction & logistic sites
- Telecoms compound
- Traction power compound
- Bridges and retaining walls
- Noise mitigation (indicative)
- Station or other building
- Utilities construction zone
- Habitat creation - woodland
- Habitat creation - hedgerow
- Habitat creation - scrub
- Habitat creation - grassland
- Habitat creation - wetland
- Public realm / station car parking
- Public Right of Way - existing
- Public Right of Way - closed
- Public Right of Way - proposed
- Balancing pond (indicative)
- Drainage attenuation tank (below ground)
- Preliminary utilities diversion

Project

East West Rail
Oxford to Cambridge

Drawing Title

DCO Non-Statutory Consultation
Roxton to east of St Neots
Route Section 5
Sheet 1 Option 1C

east west RAIL

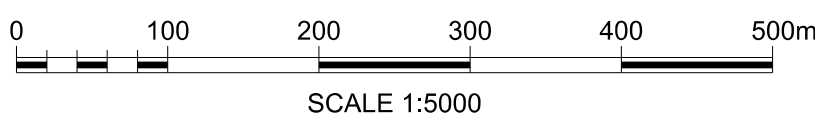
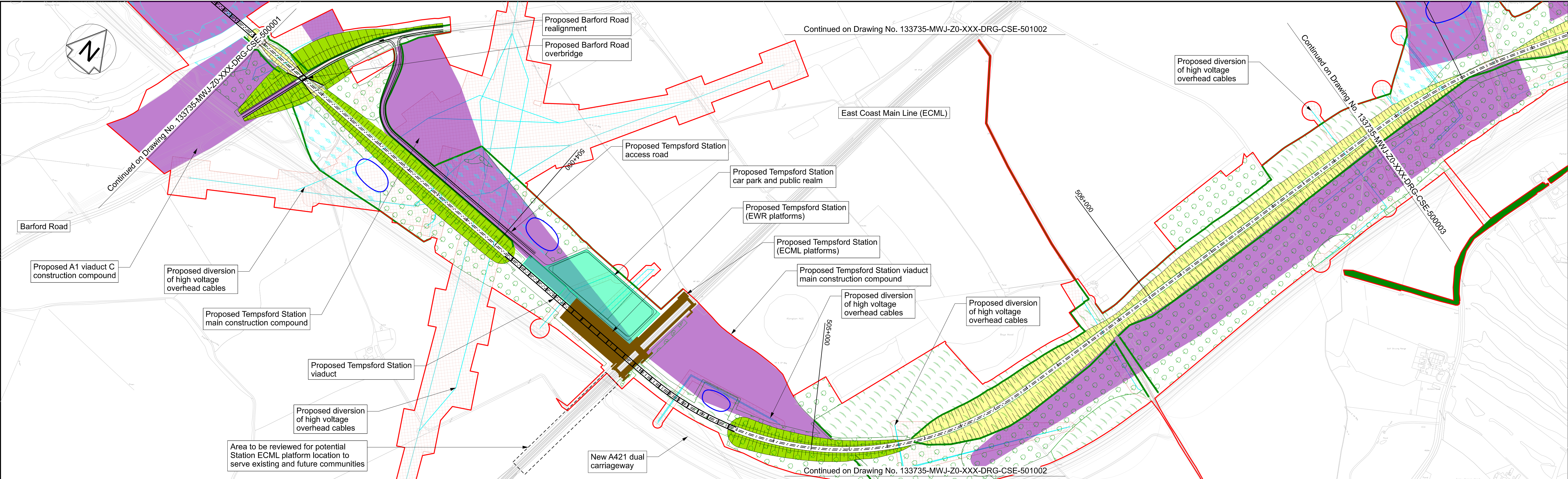
One Grafton Mews, Midsummer Boulevard, Milton Keynes, MK9 1FB

east west RAIL JV

Molt MacDonald House, 8-10 Sydenham Road, Croydon, CR20 2EE.
WSP House, Chancery Lane, London, WC2A 1AF.

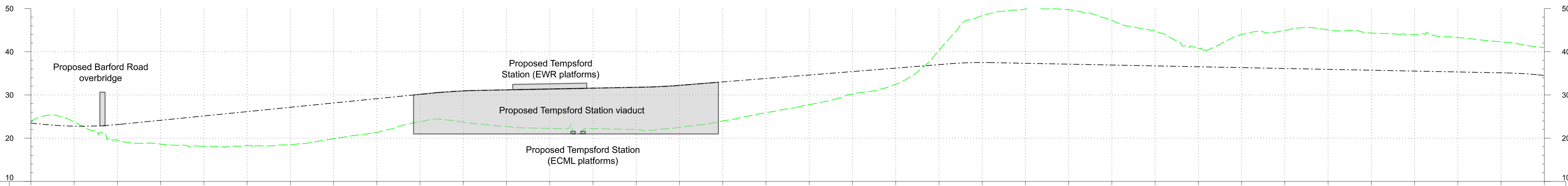
Designed MWJV	Signed JS	Date 04/11/24	Checked M.KYNOCH	Signed MK	Date 04/11/24
Drawn J.SYMONDS	Signed JS	Date 04/11/24	Approved M.PENFOLD	Signed MP	Date 04/11/24
Scale(s) 1:5000	Status Information		Suitability Code S2	Revision 44 of 76	Sheet P02

Drawing Number
133735-MWJ-Z0-XXX-DRG-CSE-500001



PLAN
SCALE 1:5000 @ A1

- Profile Legend:
- EWR vertical alignment
 - - - Existing vertical alignment
 - - - Existing ground



DOWN MAIN	CHAINAGE	503+200	503+300	503+400	503+500	503+600	503+700	503+800	503+900	504+000	504+100	504+200	504+300	504+400	504+500	504+600	504+700	504+800	504+900	505+000	505+100	505+200	505+300	505+400	505+500	505+600	505+700	505+800	505+900	506+000	506+100	506+200	506+300	506+400	506+500	506+600	506+700
	EXISTING LEVEL	23.8	23.7	19.5	18.6	18.1	18.3	18.5	19.9	21.4	23.8	23.7	22.7	22.2	22.2	21.9	22.5	24.0	25.9	27.8	30.1	32.4	40.3	48.3	49.9	49.7	47.3	44.7	40.7	44.0	44.9	45.1	44.3	43.9	43.3	42.3	40.9
	PROPOSED LEVEL	23.5	22.8	23.1	24.1	25.1	26.1	27.1	28.1	29.1	30.1	31.0	31.2	31.4	31.6	31.8	32.2	33.0	33.8	34.6	35.4	36.2	37.0	37.5	37.3	37.1	36.9	36.7	36.5	36.3	36.1	35.9	35.7	35.5	35.3	35.1	34.5
	DIFFERENCE	-0.3	-1.0	3.6	5.5	7.0	7.9	8.7	8.3	7.8	6.3	7.2	8.5	9.1	9.4	9.8	9.7	9.0	7.9	6.8	5.3	3.8	-3.3	-10.8	-12.6	-12.6	-10.4	-8.0	-4.2	-7.7	-8.8	-9.1	-8.6	-8.4	-8.0	-7.2	-6.4

PROFILE
SCALE H:1:5000 V:1:500 @ A1

OS map data reproduced by permission of Ordnance Survey on behalf of HMSO. © Crown copyright 2021. All rights reserved. Ordnance Survey licence number AC0000830606
This document is issued for the party which commissioned it and for specific purposes connected with the captioned project only. It should not be relied upon by any other party or used for any other purpose.
We accept no responsibility for the consequences of this document being relied upon by any other party, or being used for any other purpose, or containing any error or omission which is due to an error or omission in data supplied to us by other parties.

Legend/Notes

- Draft Order Limits

EWR alignment

100+000

Chainage (metres)

Permanent highway (public and private)

EWR existing alignment (by others)

Construction zone (by others)

Engineering earthworks (embankment)

Engineering earthworks (cutting)

Landscape mitigation earthworks (embankment)

Landscape mitigation earthworks (cutting)

Construction & logistic sites

Telecoms compound

Traction power compound

Bridges and retaining walls

Noise mitigation (indicative)

Station or other building

Utilities construction zone

Habitat creation - woodland

Habitat creation - hedgerow

Habitat creation - scrub

Habitat creation - grassland

Habitat creation - wetland

Public realm / station car parking

Public Right of Way - existing

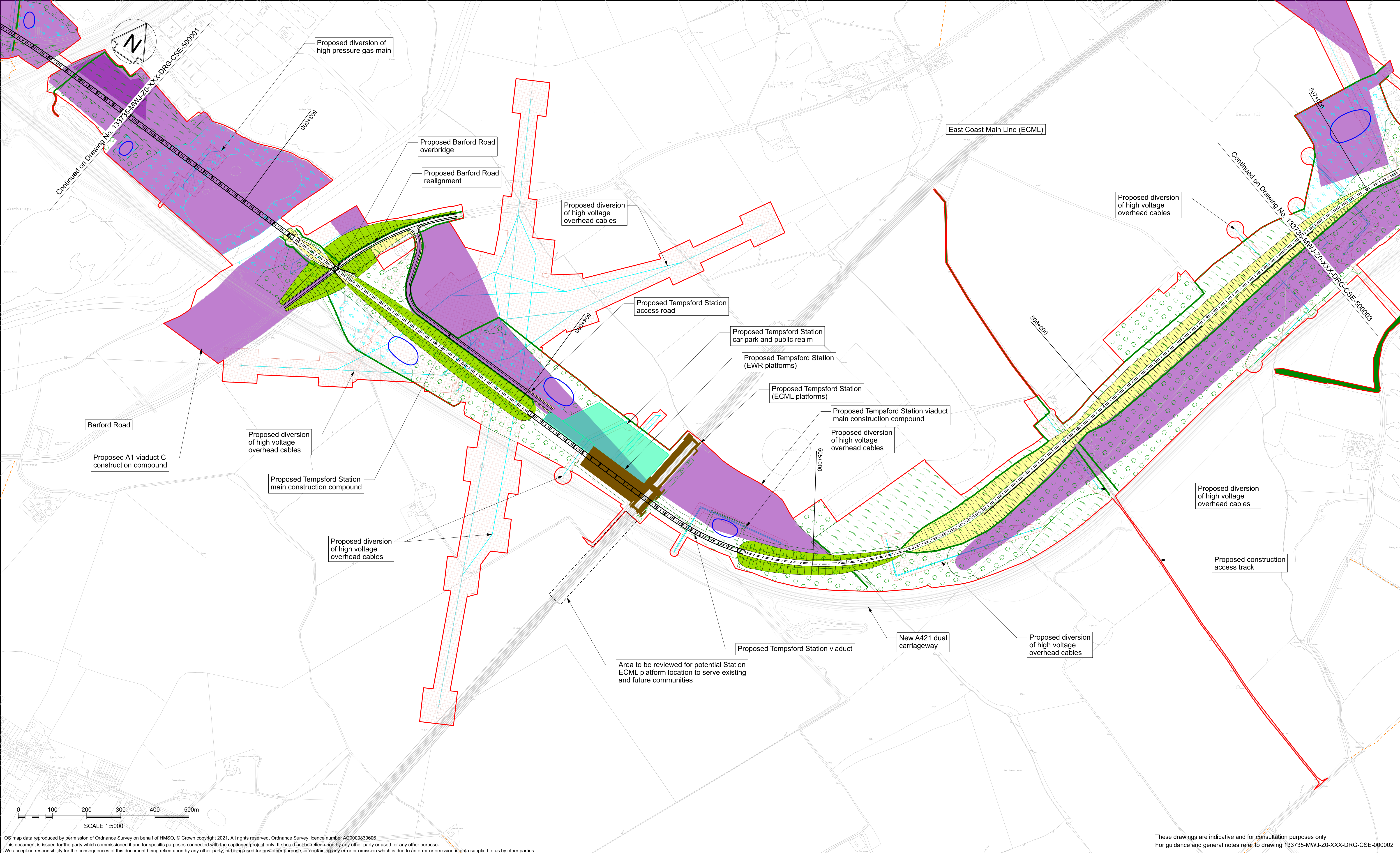
Public Right of Way - closed

Public Right of Way - proposed

Balancing pond (indicative)

Drainage attenuation tank (below ground)

Preliminary utilities diversion
- Project
- East West Rail
Oxford to Cambridge
- Drawing Title
- DCO Non-Statutory Consultation
Roxton to east of St Neots
Route Section 5
Sheet 2 Option 1C
- east west RAIL**
One Grafton Mews, Midsummer Boulevard, Milton Keynes,
Buckinghamshire, MK9 1FB
- M J V**
Molt MacDonald House, 8-10 Sydenham Road, Croydon, CR20 2EE.
WSP House, Chancery Lane, London, WC2A 1AF.
- | | | | | | |
|----------------------------------------------------|-----------------------|------------------|------------------------|----------------------|------------------|
| Designed
MWJV | Signed | Date | Checked
M.KYNOCH | Signed
MK | Date
04/11/24 |
| Drawn
J.SYMONDS | Signed
JS | Date
04/11/24 | Approved
M.PENFOLD | Signed
MP | Date
04/11/24 |
| Scale(s)
1:5000 | Status
Information | | Suitability Code
S2 | Revision
45 of 76 | Sheet
P02 |
| Drawing Number
133735-MWJ-Z0-XXX-DRG-CSE-500002 | | | | | |
- Sheet Size A1 841 x 594



OS map data reproduced by permission of Ordnance Survey on behalf of HMSO. © Crown copyright 2021. All rights reserved. Ordnance Survey licence number AC0000830608
This document is issued for the party which commissioned it and for specific purposes connected with the captioned project only. It should not be relied upon by any other party or used for any other purpose.
We accept no responsibility for the consequences of this document being relied upon by any other party, or being used for any other purpose, or containing any error or omission which is due to an error or omission in data supplied to us by other parties.

These drawings are indicative and for consultation purposes only
For guidance and general notes refer to drawing 133735-MWJ-Z0-XXX-DRG-CSE-000002

Legend/Notes			
	Draft Order Limits		Engineering earthworks (embankment)
	EWR alignment		Engineering earthworks (cutting)
	Chainage (metres)		Landscape mitigation earthworks (embankment)
	Permanent highway (public and private)		Landscape mitigation earthworks (cutting)
	EWR existing alignment (by others)		Construction & logistic sites
	Construction zone (by others)		Telecoms compound
			Traction power compound
			Bridges and retaining walls
			Noise mitigation (indicative)
			Station or other building
			Utilities construction zone
			Habitat creation - woodland
			Habitat creation - hedgerow
			Habitat creation - scrub
			Habitat creation - grassland
			Habitat creation - wetland
			Public realm / station car parking
			Public Right of Way - existing
			Public Right of Way - closed
			Public Right of Way - proposed
			Balancing pond (indicative)
			Drainage attenuation tank (below ground)
			Preliminary utilities diversion

P01	10/06/24	Prepared for Information	JS	MP	
P02	04/11/24	Prepared for Non-Statutory Consultation	JS	MB	MP
Rev	Date	Description of Revisions	Drawn	Chkd	Appr

Project

East West Rail
Oxford to Cambridge

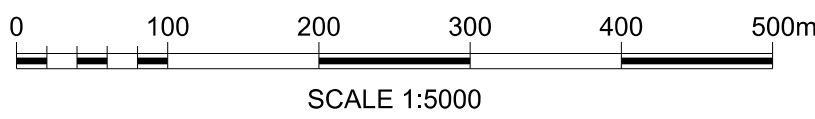
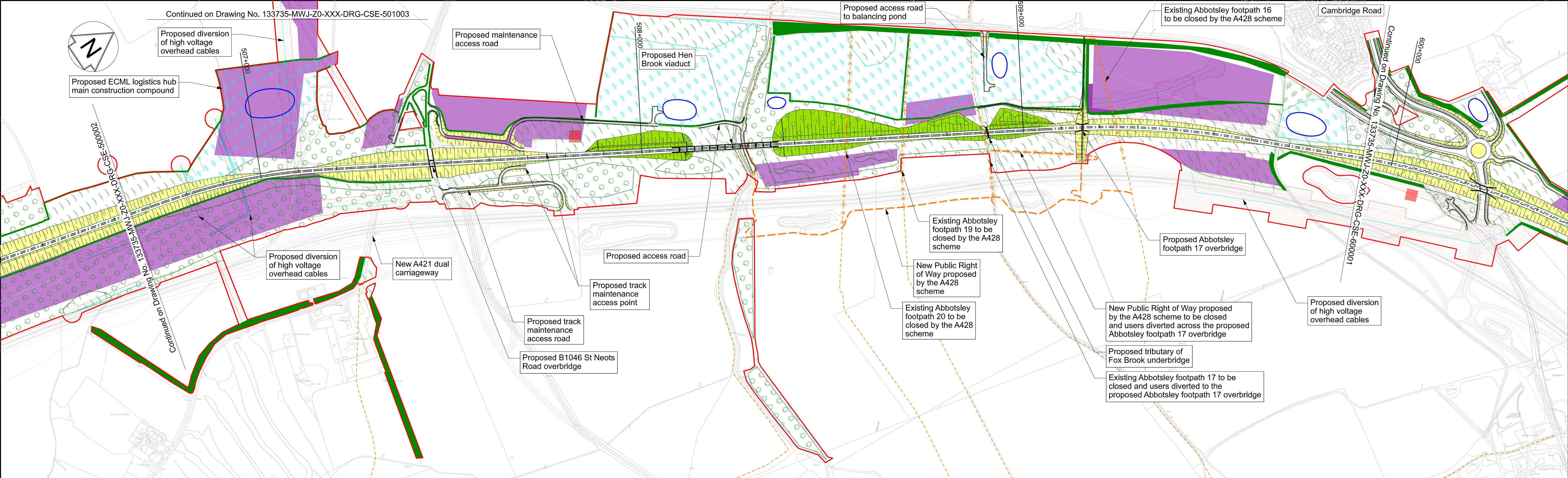
Drawing Title

DCO Non-Statutory Consultation
Roxton to east of St Neots
Route Section 5
Sheet 2a Option 1C

One Grafton Mews, Midsummer Boulevard, Milton Keynes, Buckinghamshire, MK9 1FB

Molt MacDonald House, 8-10 Sydenham Road, Croydon, CR20 2EE, WSP House, Chancery Lane, London, WC2A 1AF.

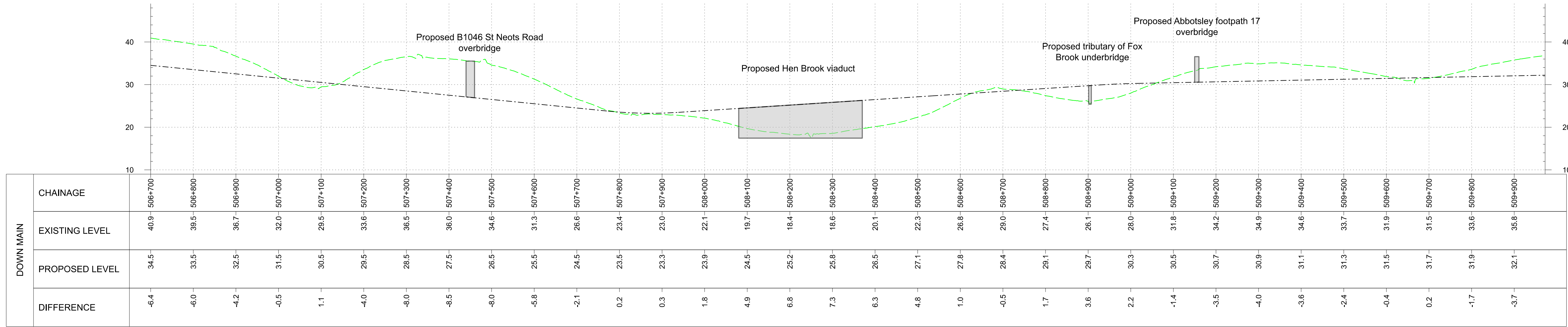
Designed	MWJV	Signed		Date		Checked	M.KYNOCH	Signed	MK	Date	04/11/24
Drawn	J.SYMONDS	Signed	JS	Date	04/11/24	Approved	M.PENFOLD	Signed	MP	Date	04/11/24
Scale(s)	1:5000	Status	Information	Suitability Code	S2	Revision	49 of 76				
Drawing Number	133735-MWJ-Z0-XXX-DRG-CSE-501002										P02



PLAN
SCALE 1:5000 @ A1

Profile Legend:

- EWR vertical alignment
- - - Existing vertical alignment
- Existing ground

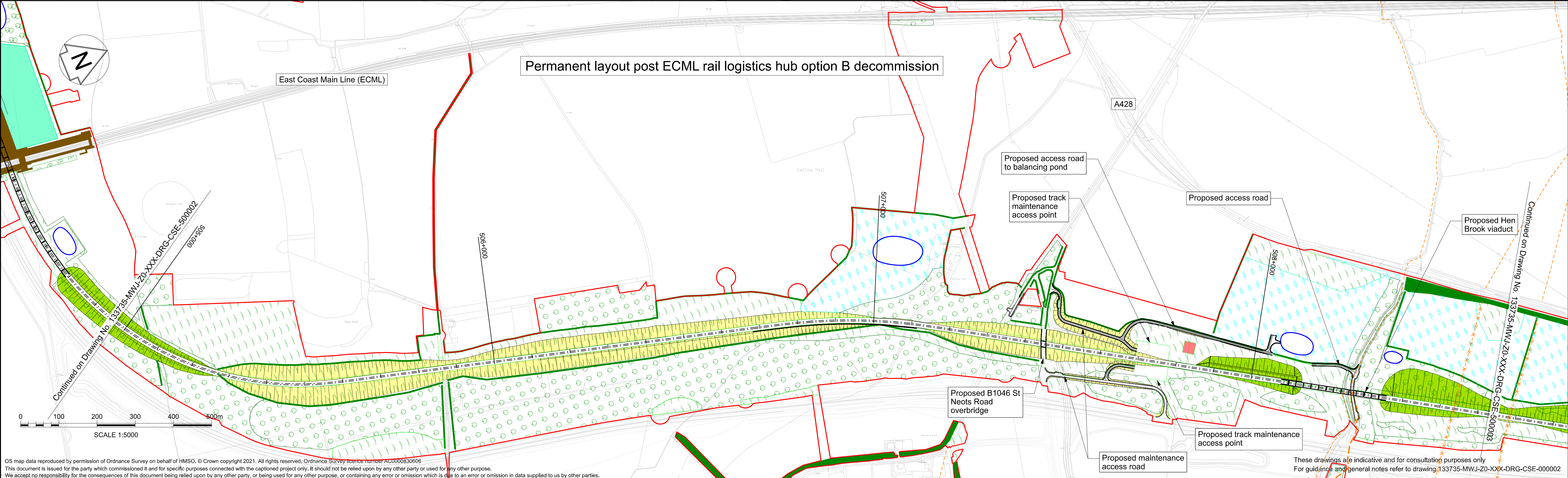
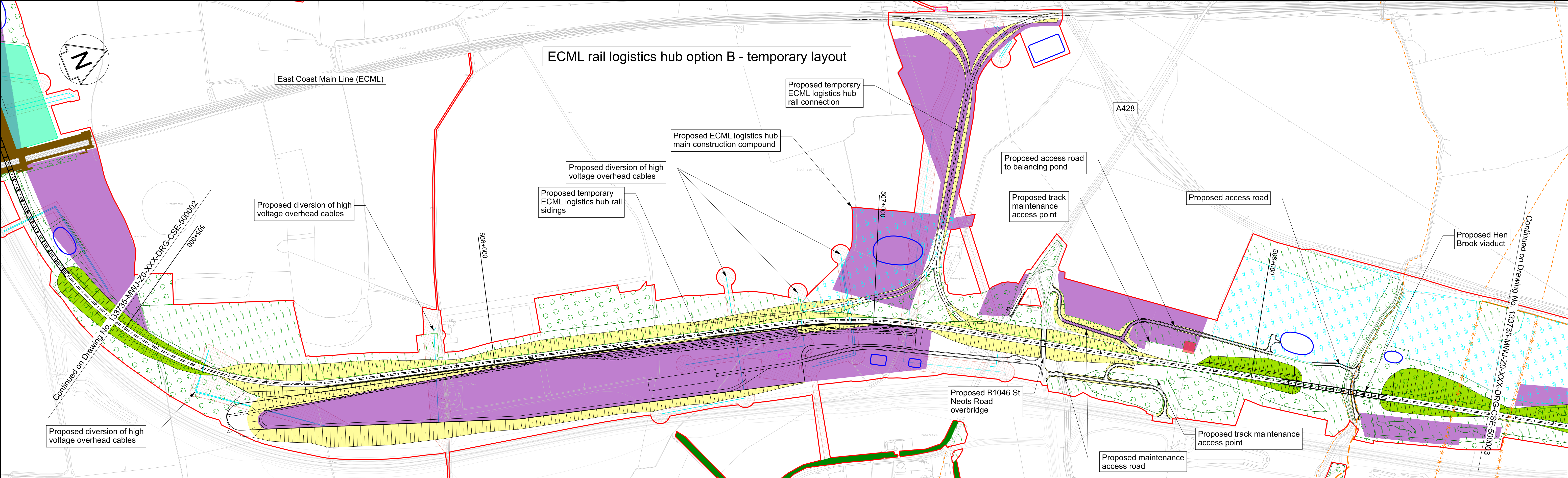


PROFILE
SCALE H:1:5000 V:1:500 @ A1

OS map data reproduced by permission of Ordnance Survey on behalf of HMSO. © Crown copyright 2021. All rights reserved. Ordnance Survey licence number AC0000830608
This document is issued for the party which commissioned it and for specific purposes connected with the captioned project only. It should not be relied upon by any other party or used for any other purpose.
We accept no responsibility for the consequences of this document being relied upon by any other party, or being used for any other purpose, or containing any error or omission which is due to an error or omission in data supplied to us by other parties.

These drawings are indicative and for consultation purposes only
For guidance and general notes refer to drawing 133735-MWJ-Z0-XXX-DRG-CSE-000002

										<div>Legend/Notes</div> <div><div><div><div><div></div><div>Draft Order Limits</div></div><div><div></div><div>EWR alignment</div></div><div><div>100+000</div><div>Chainage (metres)</div></div><div><div></div><div>Permanent highway (public and private)</div></div><div><div></div><div>EWR existing alignment (by others)</div></div><div><div></div><div>Construction zone (by others)</div></div></div><div><div><div><div></div><div>Engineering earthworks (embankment)</div></div><div><div></div><div>Engineering earthworks (cutting)</div></div><div><div></div><div>Landscape mitigation earthworks (embankment)</div></div><div><div></div><div>Landscape mitigation earthworks (cutting)</div></div></div><div><div><div><div></div><div>Construction & logistic sites</div></div><div><div></div><div>Telecoms compound</div></div><div><div></div><div>Traction power compound</div></div><div><div></div><div>Bridges and retaining walls</div></div><div><div></div><div>Noise mitigation (indicative)</div></div><div><div></div><div>Station or other building</div></div><div><div></div><div>Utilities construction zone</div></div></div></div></div></div></div>										<div><div><div><div></div><div>Habitat creation - woodland</div></div><div><div></div><div>Habitat creation - hedgerow</div></div><div><div></div><div>Habitat creation - scrub</div></div><div><div></div><div>Habitat creation - grassland</div></div><div><div></div><div>Habitat creation - wetland</div></div><div><div></div><div>Public realm / station car parking</div></div></div><div><div><div><div></div><div>Public Right of Way - existing</div></div><div><div></div><div>Public Right of Way - closed</div></div><div><div></div><div>Public Right of Way - proposed</div></div><div><div></div><div>Balancing pond (indicative)</div></div><div><div></div><div>Drainage attenuation tank (below ground)</div></div><div><div></div><div>Preliminary utilities diversion</div></div></div></div></div>									
										<div>Project</div> <div>East West Rail Oxford to Cambridge</div> <div>Drawing Title</div> <div>DCO Non-Statutory Consultation Roxton to east of St Neots Route Section 5 Sheet 3 Option 1C</div>																			
										<div>One Grafton Mews, Midsummer Boulevard, Milton Keynes, Buckinghamshire, MK9 1FB</div> <div>Mott MacDonald House, 8-10 Sydenham Road, Croydon, CR20 2EE. WSP House, Chancery Lane, London, WC2A 1AF.</div>																			
										<div>Designed MWJV</div> <div>Signed JS</div> <div>Date 04/11/24</div> <div>Checked M.KYNOCH</div> <div>Signed MK</div> <div>Date 04/11/24</div>																			
										<div>Drawn J.SYMONDS</div> <div>Status Information</div> <div>Approved M.PENFOLD</div> <div>Signed MP</div> <div>Date 04/11/24</div>																			
										<div>Scale(s) 1:5000</div> <div>Revision 133735-MWJ-Z0-XXX-DRG-CSE-500003</div> <div>Suitability Code S2</div> <div>46 of 76</div>																			
										<div>Drawing Number</div> <div>P02</div>																			



OS map data reproduced by permission of Ordnance Survey on behalf of HMSO. © Crown copyright 2021. All rights reserved. Ordnance Survey licence number AC0000630006
This document is issued for the party which commissioned it and for specific purposes connected with the captioned project only. It should not be relied upon by any other party or used for any other purpose.
We accept no responsibility for the consequences of this document being relied upon by any other party, or being used for any other purpose, or containing any error or omission which is due to an error or omission in data supplied to us by other parties.

Legend/Notes			
	Draft Order Limits		Construction & logistic sites
	EWR alignment		Telecoms compound
	Chainage (metres)		Traction power compound
	Permanent highway (public and private)		Bridges and retaining walls
	EWR existing alignment (by others)		Noise mitigation (indicative)
	Construction zone (by others)		Station or other building
	Engineering earthworks (embankment)		Habitat creation - woodland
	Engineering earthworks (cutting)		Habitat creation - hedgerow
	Landscape mitigation earthworks (embankment)		Habitat creation - scrub
	Landscape mitigation earthworks (cutting)		Habitat creation - grassland
			Habitat creation - wetland
			Public realm / station car parking
			Public Right of Way - existing
			Public Right of Way - closed
			Public Right of Way - proposed
			Balancing pond (indicative)
			Drainage attenuation tank (below ground)
			Preliminary utilities diversion

P01	10/06/24	Prepared for Information	JS	MP	
P02	04/11/24	Prepared for Non-Statutory Consultation	JS	MB	MP
Rev	Date	Description of Revisions	Drawn	Chkd	Appr

	Construction & logistic sites		Habitat creation - woodland		Public Right of Way - existing
	Telecoms compound		Habitat creation - hedgerow		Public Right of Way - closed
	Traction power compound		Habitat creation - scrub		Public Right of Way - proposed
	Bridges and retaining walls		Habitat creation - grassland		Balancing pond (indicative)
	Noise mitigation (indicative)		Habitat creation - wetland		Drainage attenuation tank (below ground)
	Station or other building		Public realm / station car parking		Preliminary utilities diversion
	Engineering earthworks (embankment)				
	Engineering earthworks (cutting)				
	Landscape mitigation earthworks (embankment)				
	Landscape mitigation earthworks (cutting)				

Project

East West Rail
Oxford to Cambridge

Drawing Title

DCO Non-Statutory Consultation
Roxton to east of St Neots
Route Section 5
Sheet 3a Option 1C & Hub Op B

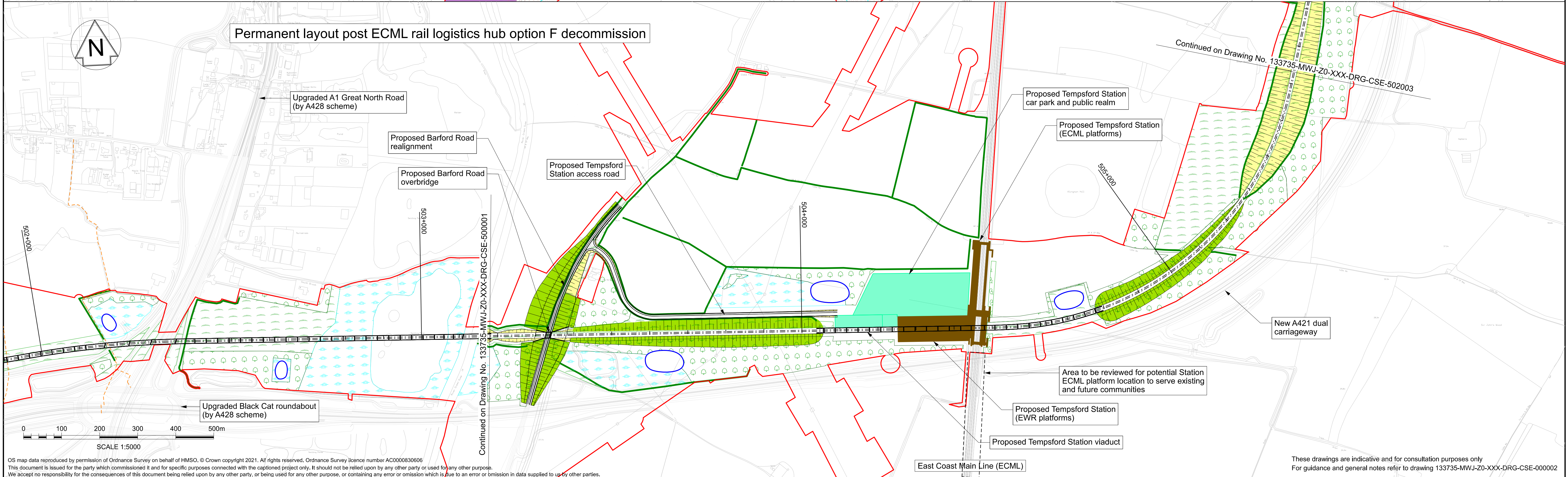
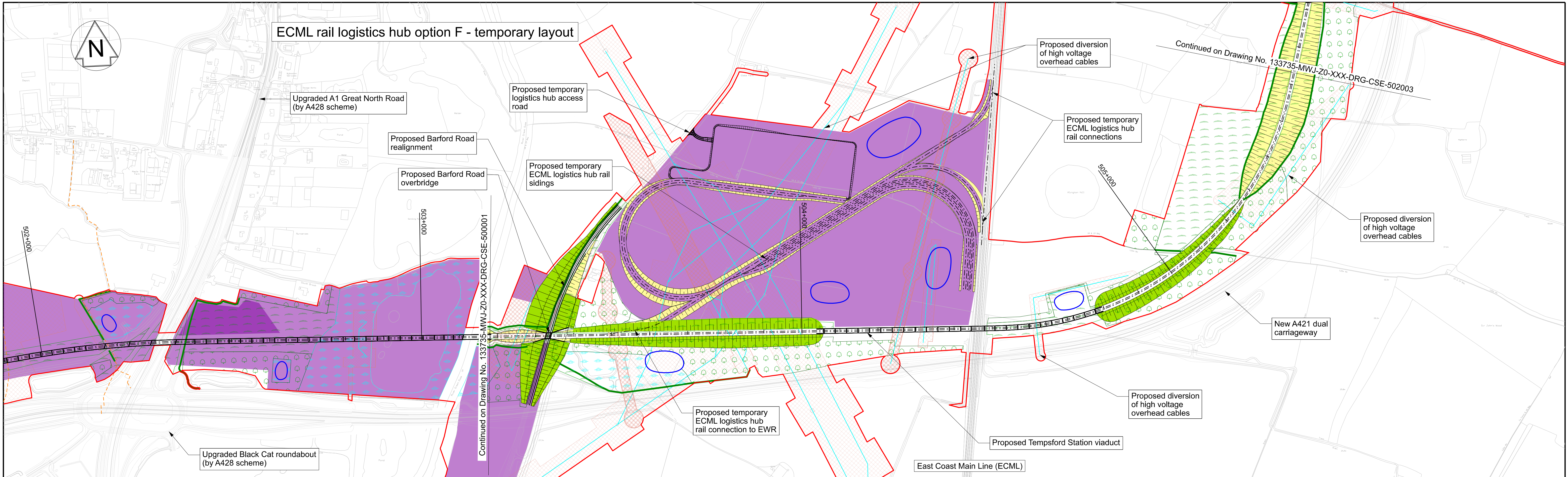
One Grafton Mews, Midsummer Boulevard, Milton Keynes, Buckinghamshire, MK9 1FB

Molt MacDonald House, 8-10 Sydenham Road, Croydon, CR20 2EE, WSP House, Chancery Lane, London, WC2A 1AF

Designed	MWJV	Signed		Date		Checked	M.KYNOCH	Signed	MK	Date	04/11/24
Drawn	J.SYMONDS	Signed	JS	Date	04/11/24	Approved	M.PENFOLD	Signed	MP	Date	04/11/24
Scale(s)	1:5000	Status	Information	Suitability Code	S2	Revision		Sheet	50	of	76
Drawing Number	133735-MWJ-Z0-XXX-DRG-CSE-501003	P02									

133735-MWJ-Z0-XXX-DRG-CSE-501003

P02



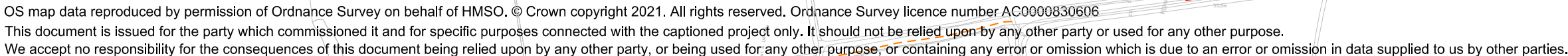
OS map data reproduced by permission of Ordnance Survey on behalf of HMSO. © Crown copyright 2021. All rights reserved. Ordnance Survey licence number AC0000830606
This document is issued for the party which commissioned it and for specific purposes connected with the captioned project only. It should not be relied upon by any other party or used for any other purpose.
We accept no responsibility for the consequences of this document being relied upon by any other party, or being used for any other purpose, or containing any error or omission which is due to an error or omission in data supplied to us by other parties.

						Legend/Notes	
							Draft Order Limits
							EWR alignment
							Chainage (metres)
							Permanent highway (public and private)
							EWR existing alignment (by others)
							Construction zone (by others)
P01	10/06/24	Prepared for Information	JS	MP			
P02	04/11/24	Prepared for Non-Statutory Consultation	JS	MB	MP		
Rev	Date	Description of Revisions	Drawn	Chkd	Appr		

	Draft Order Limits		Construction & logistic sites		Habitat creation - woodland		Public Right of Way - existing
	EWR alignment		Telecoms compound		Habitat creation - hedgerow		Public Right of Way - closed
	Chainage (metres)		Traction power compound		Habitat creation - scrub		Public Right of Way - proposed
	Permanent highway (public and private)		Bridges and retaining walls		Habitat creation - grassland		Balancing pond (indicative)
	EWR existing alignment (by others)		Noise mitigation (indicative)		Habitat creation - wetland		Drainage attenuation tank (below ground)
	Construction zone (by others)		Station or other building		Public realm / station car parking		Preliminary utilities diversion
	Engineering earthworks (embankment)		Utilities construction zone				
	Engineering earthworks (cutting)						
	Landscape mitigation earthworks (embankment)						
	Landscape mitigation earthworks (cutting)						

Project	
East West Rail Oxford to Cambridge	
Drawing Title	
DCO Non-Statutory Consultation Roxton to east of St Neots Route Section 5 Sheet 2b Option 1C & Hub F	



east west RAIL			
One Grafton Mews, Midsummer Boulevard, Milton Keynes, Buckinghamshire, MK9 1FB		Mott MacDonald House, 8-10 Sydenham Road, Croydon, CR20 2EE, WSP House, Chancery Lane, London, WC2A 1AF	
Designed MWJV	Signed JS	Checked M.KYNOCH	Signed MK
Drawn J.SYMONDS	Date 04/11/24	Approved M.PENFOLD	Date 04/11/24
Scale(s) 1:5000	Status Information	Suitability Code S2	Sheet 53 of 76
Drawing Number 133735-MWJ-Z0-XXX-DRG-CSE-502002	Revision P02		



These drawings are indicative and for consultation purposes only
For guidance and general notes refer to drawing 133735-MWJ-Z0-XXX-DRG-CSE-000002

Legend/Notes									
	Draft Order Limits		Engineering earthworks (embankment)		Construction & logistic sites		Habitat creation - woodland		Public Right of Way - existing
	EW R alignment		Engineering earthworks (cutting)		Telecoms compound		Habitat creation - hedgerow		Public Right of Way - closed
	Chainage (metres)		Engineering earthworks (cutting)		Traction power compound		Habitat creation - scrub		Public Right of Way - proposed
	Permanent highway (public and private)		Landscape mitigation earthworks (embankment)		Bridges and retaining walls		Habitat creation - grassland		Balancing pond (indicative)
	EW R existing alignment (by others)		Landscape mitigation earthworks (cutting)		Noise mitigation (indicative)		Habitat creation - wetland		Drainage attenuation tank (below ground)
	Construction zone (by others)		Landscape mitigation earthworks (cutting)		Station or other building		Public realm / station car parking		Preliminary utilities diversion
					Utilities construction zone				

Project	East West Rail Oxford to Cambridge
Drawing Title	DCO Non-Statutory Consultation Roxton to east of St Neots Route Section 5 Sheet 3b Option 1C & Hub F

			
One Grafton Mews, Midsummer Boulevard, Milton Keynes, Buckinghamshire, MK9 1FB		Mott MacDonald House, 8-10 Sydenham Road, Croydon, CR20 2EE. WSP House, Chancery Lane, London, WC2A 1AF.	
Designed	Signed	Date	Checked
MWJV			M.KYNOCH
Drawn	Signed	Date	Signed
J.SYMONDS	JS	04/11/24	MP
Scale(s)	Status	Suitability Code	
1:5000	Information	S2	
Drawing Number	133735-MWJ-Z0-XXX-DRG-CSE-502003		Revision
			P02